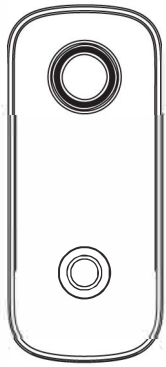


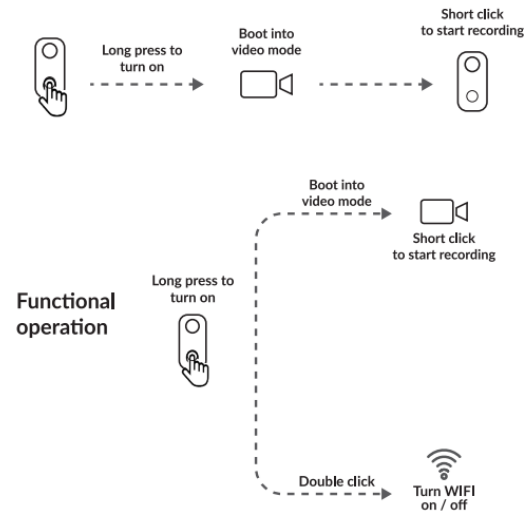


# AVON BODY CAM

## QUICK START GUIDE



### POWER CYCLE



### ACCESSORIES



### OPERATION

#### Charging

Use the included USB cable to connect it to a USB charger or computer USB port to charge the camera. The camera is fully charged when the red light on the bottom goes out.

#### Installing the memory card

Please install a MicroSD memory card in the camera before using. Ensure the card is latched in place.

#### Power ON/OFF

Press and hold the button for 5 seconds to power on the camera. It powers into video recording by default (solid blue ring light). Pressing and holding the button for 3 seconds will shut it off.

#### Record Video

A solid blue ring light means video is recording. Hit the button to pause. The light will flash continuously to indicate that its on standby. Hit the button again to restart recording.

### WIFI SETUP

Please install the SportCam app from Apple store or Google play. You may scan the QR codes below for a direct link.



iOS



SportCam



Android

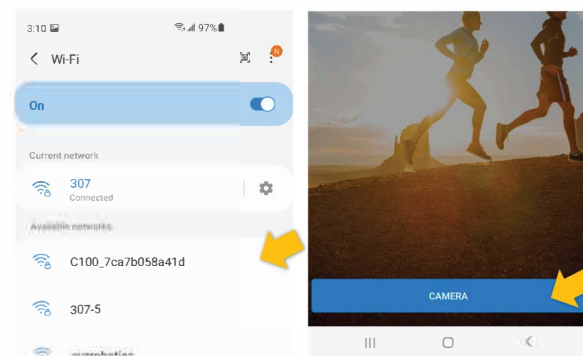
From standby or video recording, double press the button on the camera to switch into WiFi mode. The ring light will flash in between blue and green indicating the WiFi is on.

Connect your phone's WiFi directly to the camera. In your phone's WiFi settings look for a network starting with the name AVON\_\*\*\*\*. The default password is 12345678

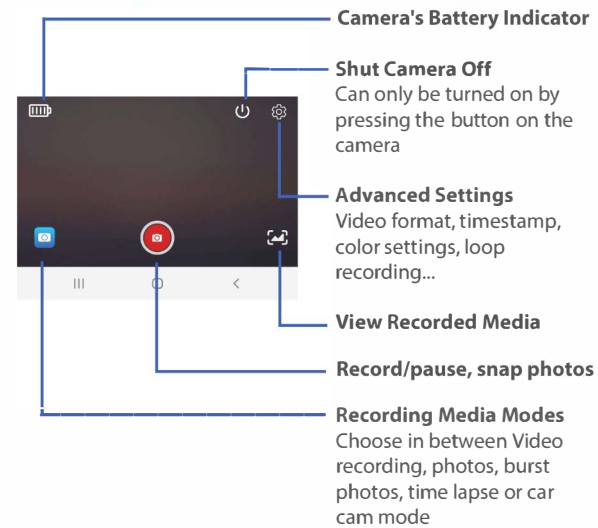
### WIFI SETUP

Once connected the ring light will go into solid green. You can now use the SportCam app to setup the camera.

Add and connect to the camera for live view by tapping on the CAMERA button in the apps opening screen.

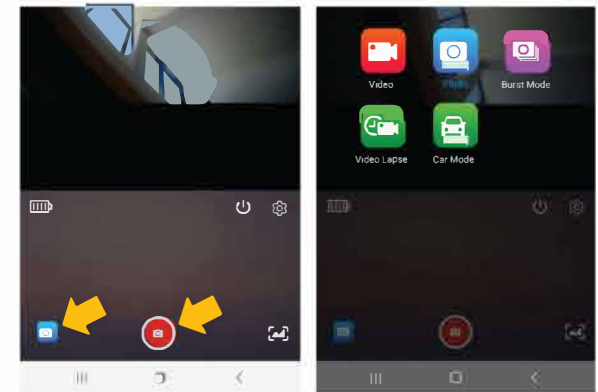


### LIVE VIEW SCREEN

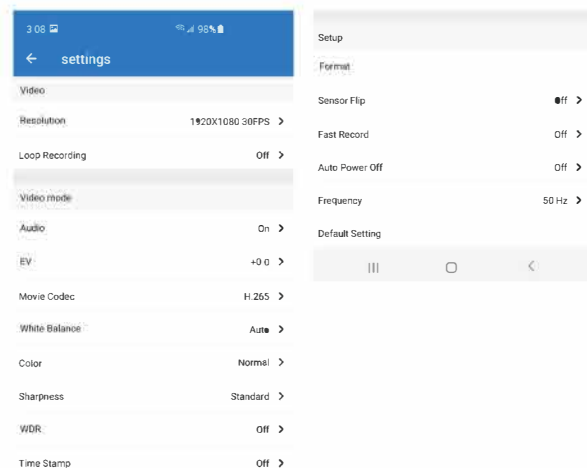


### CAMERA MODES

On the live video screen, you can choose 5 different modes of operation: Video record, Photos, Burst mode that will take 3 photos in fast succession, Time lapse video and Car cam mode. Tap the red button start, pause video recording or snap photos.

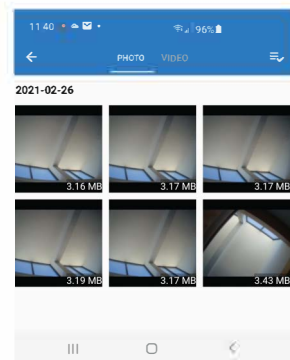


### SETTINGS



### MEDIA PLAYBACK

Tap the media icon to access your recorded media. All media is recorded in the MicroSD card, witch can also be accessed via your computer.



### TROUBLESHOOTER

Most issues can be solved by formatting the memory card in your computer to clear up any corruption, or resetting the camera. You can reset the camera by pressing and holding the reset button on the bottom of the camera for 5 seconds while the camera is on.

