



# METIS

Bluetooth Cpeaker Hidden Cam



**USER MANUAL**

Thank you so much for purchasing the our Mini Spy Camera Wi-Fi. Please read the instruction manual carefully and use it correctly and safely. Please keep it in a safe place for future reference.

Notes (Very important): This is a high-tech product, please read the instructions carefully before using the camera. If you don't know how to install it, or have questions, please contact us with your order number to this e-mail:

Our customer support will send you some pictures and videos to help you set-up and use this camera. Please read this User Manual before using.

**You can Scan the QR code to read the electronic manual.**



Camera Lens

Bluetooth Switch / Vol+/Vol- Switch



Ornament( Not Function)

TF Card Slot

Bluetooth / Charging  
Indicator Light

Main Switch

USB Charging Port

Wi-Fi Config Indicator Light

Reset Indicator Light

Camera ON/ OFF Button

Reset Switch



Cover Board



## **Switch Function Description**

**Main Switch: To Control Bluetooth/Camera on or off at the Same Time**

**Bluetooth Switch / Vol+/Vol- Switch:**

**a.Clockwise Slide: Turn on the camera 's Bluetooth / Turn up the music playback vol+**

**b.Counterclockwise Slide: Turn off the camera's Bluetooth / Turn down the music playback vol-**

## Quick Guide For APP Installation

### 1. For iOS Devices:

a. Scan below QR Code for iOS operating system --- download and install “**Camama**” APP on a phone.

b. Search “**Camama**” in App Store with your iOS devices, download and install App.

### 2. For Android Devices:

a. Scan below QR Code for Android operating system --- download and install “**Camama**” App on a phone.

Note: A android devices cannot search “**Camama**” on your phone, just Scan below QR Code.



iOS Device QR Code/Android Device QR Code

## How to Connect a camera?

This part just helps you connect the camera. If you want to know more functions of this camera, you can check the settings section below.

**To supports 2.4G Wi-Fi / 5G wifi**

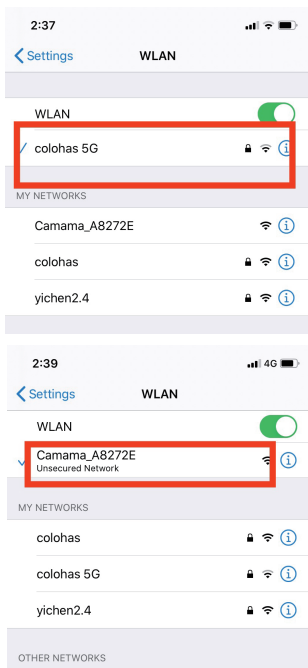
A. Connected the power supply → Turn on the device by ON/OFF switch→(Camera Indicator)Green light will flashing → The camera are waiting to be connected.

**Note: If be inserted a micro SD card, please make sure a device is off before.**

**The camera supports 2 connection modes to your mobile device:**


### **1. AP connection mode:**

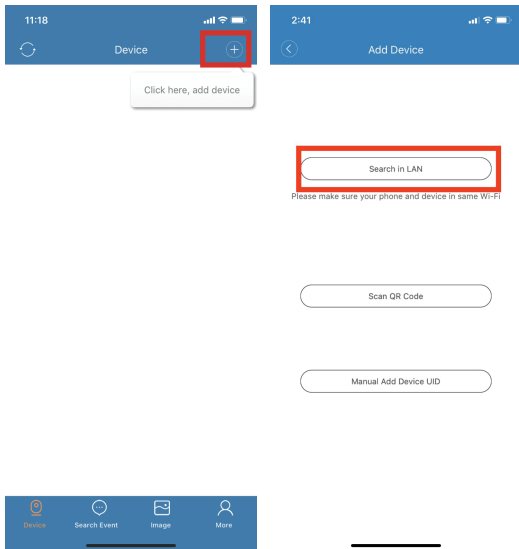
- a. Enter your phone “settings” → choose “WLAN”→ find the camera’s hot-spot signal (the name is “Camama XXXXX”),connects the camera’s hot spots.

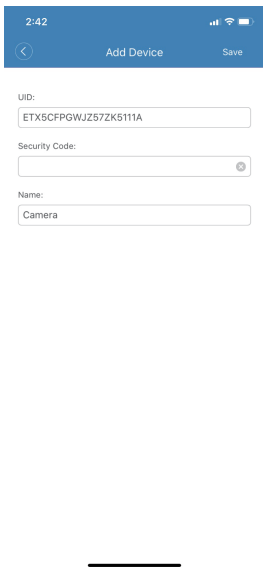
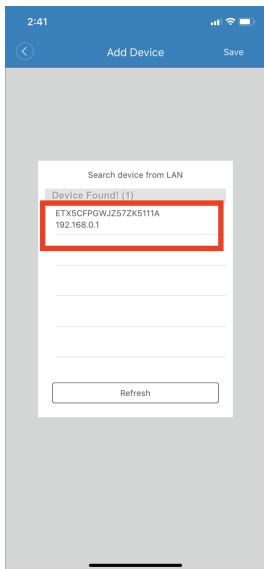


### **Important Note!**

**If not find the camera's hot-spot signal, please reboot the device by press the reset button about 8-10s → Until listening a sound of “Dingdong” → Hot spot signal will come up again → Connect it for next steps.**

- b. Load the APP (Camama) and click the button  to add new device→ Choose “Search in LAN”→ Click the device ID and Saved.
- c. After this step finished, the camera has been added to the App and you can watch the video via hot spots at distance of 10-15m range(Point-Point Mode).



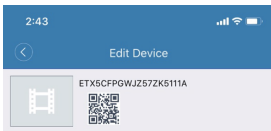
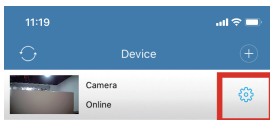


## 2. IP connection mode:

Click the setting button → Choose the “WIFI Setting” → Click the” Manage Wi-Fi networks” → Choose your home wifi and input a passwords → Click the OK button → Waiting for about 5~10 second. →when it shows “online” again, it means the wifi setting is successful.

After this step was done, the second green light will not flashing, it means the camera has been connected to router successfully.

Note: On a AP mode, you can watch a home and access the live feed at any anytime from anywhere by a mobile phone (Remote Control)



Name Camera

Current Password

Reconnect

Online

WiFi Setting

audio on/off



Alarm Settings

SDCard Record Setting

Other Setting

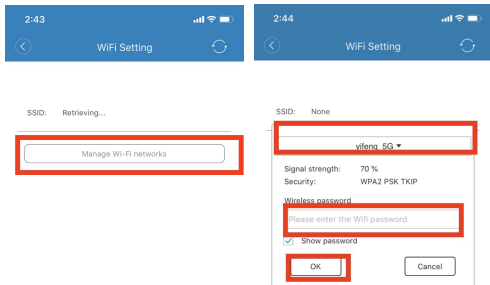
Firmware Update

Restore Factory

Reboot







**Note:**

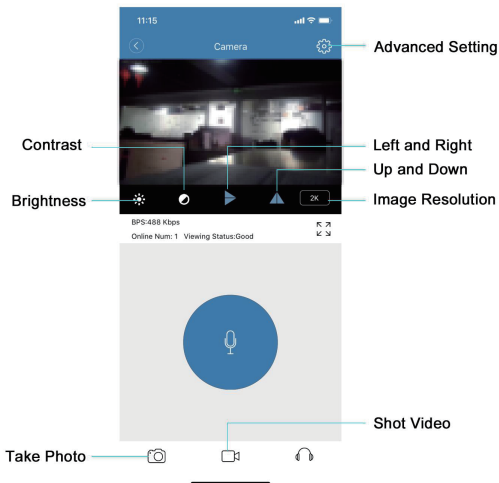
**A: Please wait a SSID: Retrieving turn into SSID:None, then you can input a wifi name and password.**

**1.After input your wifi passwords and config the connection. The device will restart automatically and wait for the camera to restart, which will be completed in about 20-40 seconds. During the connection process, please do not shut-off the device manually.**

**2.When connecting to WiFi, please make sure input the correct WiFi password. If the passwords is wrong, the camera will be offline, then you need to reboot the device and re-pair it.**

### 3. Live Feed and Remote Viewing

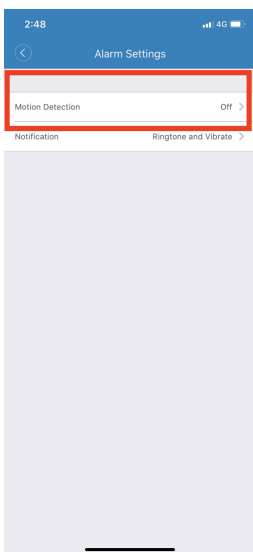
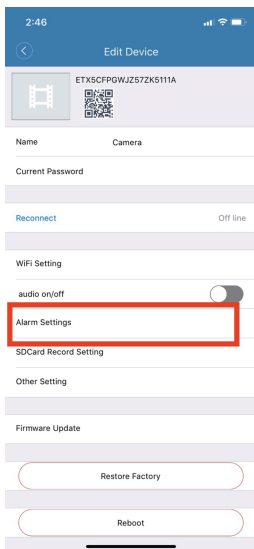
(Live Stream and Remote 7/24 Monitoring from anywhere)



## 4. Motion Detection Settings

Click the setting button → Choose the “Alarm Settings” → Set motion detection.

You can active the motion mode here and choose the levels of motion detection. It has 4 levels of motion(Low, Medium, High, Max)



## 5. SD Card Recording Settings

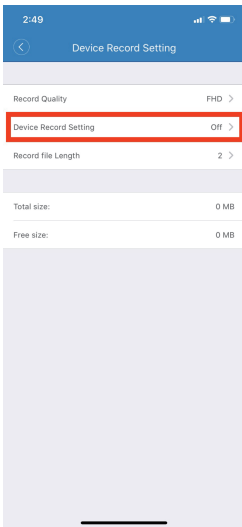
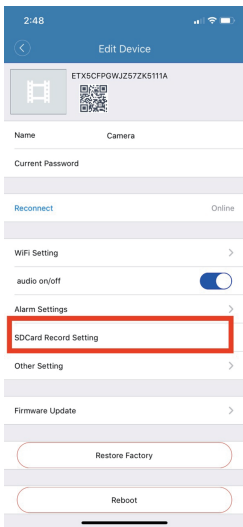
Click the setting button → Choose the “SDCard Record Setting” → Device Record Setting. You can active the SD card recording while insert a Micro SD card, you’re able to choose the 3 recording modes (Full time recording, Alarm recording and Timing Record)

### Notes:

**This camera support both recording with/without SD card.**

**A. If without SD card, it shoot videos and saved to your mobile phone.**

**B. If with SD card, the device recording automatically and save the videos to SD card, and it also saved the recordings to your mobile phone as well.**



## 6. Camera Related Parameters

Resolution Ratio	4K/2K/1080P
Video Format	AVI
Frame Number	30
Visual Angle	90 degree
Motion Detection Camera Shooting	Straight line 6 meters
Compressed Format	H.264
Night Version	5~8M
Recording Range	20 m <sup>2</sup>
Consumption	2A/5V
Storage Temperature	-20-80 degree centigrade
Operating Temperature	-10-60 degree centigrade
Operation Humidity	15-85%RH
Memory Card Type	TF card
Player Software	Mainstream player
Mobile Phone Operating System	Android/iOS

## 7. Bluetooth Speaker Using

Turn on Bluetooth switch on a device by clockwise → Enter the Bluetooth setting on your phone → Search and find the device's Bluetooth name “**Camama**” → Connect it, then you can enjoy great music by this Bluetooth speaker.

### Kindly Note:

1. The Bluetooth distance is about 10-15m. (PS:You could control the voice by your phone or media player)

### 2. The functions of Bluetooth button on a camera below:

- Clockwise Slide: Turn on the camera 's Bluetooth / Turn up the music playback vol+
- Counterclockwise Slide: Turn off the camera's Bluetooth / Turn down the music playback vol-



## 8. Frequently Question & Answers

### What can i do if the camera offline, shut-down or it cannot working?

Please reboot the device to factory settings, then connect the hot-spot signal and do the Wi-Fi configuration again.

What kind of micro SD card is required for recording?

The camera supports 8G-128GB micro SD card. Please use high speed class 10 FAT formatted memory card.

Why can't use my micro SD Card for recording?

You should format the micro SD through the App before using. If SD card is not recognized, just remove the card and re-insert it.

Why can't the camera go online?

- 1.No power connect
- 2.Check if your router is working properly or not .
- 3.Weak WiFi signal
- 4.Wrong password while WiFi setting.

Why a camera cannot connect a Bluetooth?

The battery is too low. It is a suggestion that uses the Bluetooth function while charging all the time.

Why is remote monitoring not smooth ?

You should choose a suitable resolution to watch according to your internet speed.

Why I can't save to my SD card ?

1. Please make sure you have turn-on the SD card recording function in App, and the SD card must be formatted at the first time to use it.
2. If be inserted a micro SD card, please make sure a device is off before.

How to take off a TF sd card?

Please press a sd card with your finger to remove it.

If i forgot my password ?

Press the reboot button for 8-10s to restore the device to factory setting, then you have to re-connect the wifi and can set the new passwords.

Reminder:

The initial password for the camera is 123456. Please change your own passwords to ensure the security of your camera.