



zWiFi-OutletCam



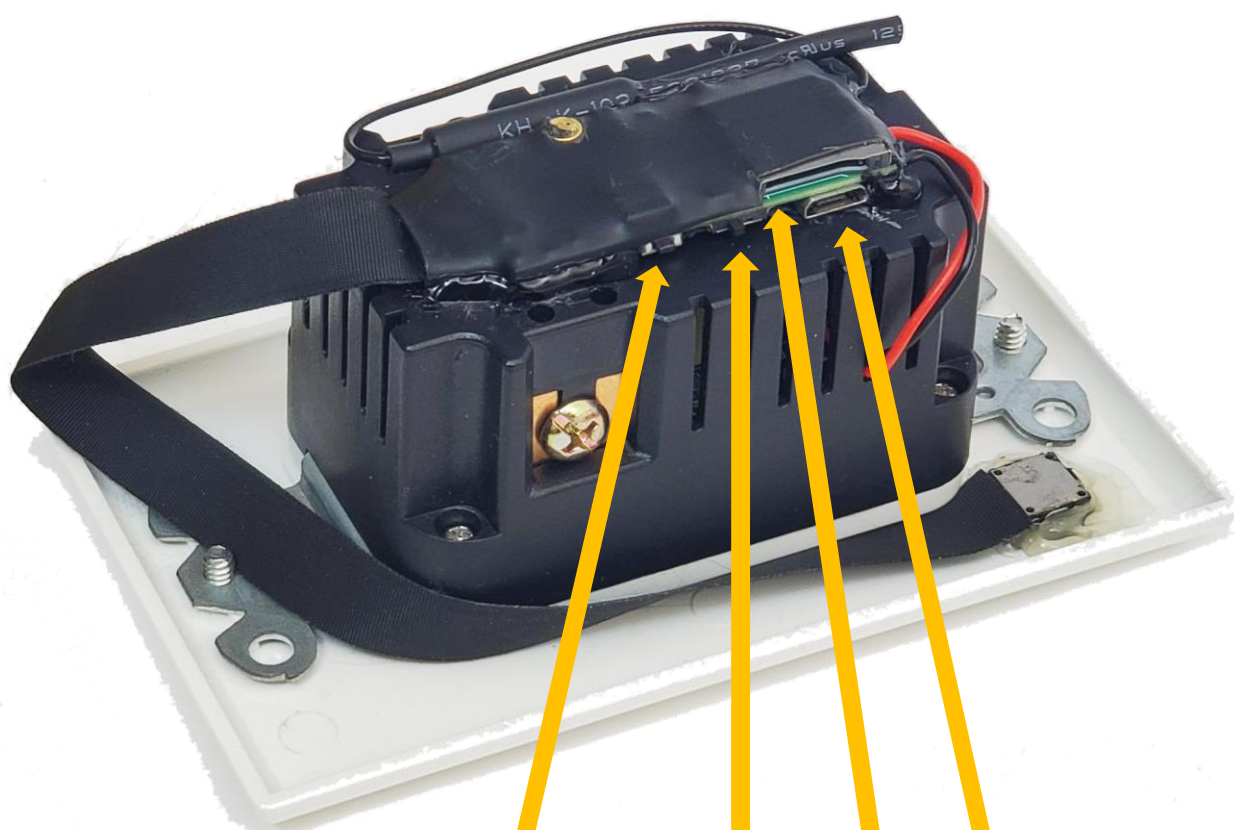
WiFi Outlet Camera

USER MANUAL

WARNING

You must have a licensed electrician install this outlet camera device. Zetronix Corp. is not responsible for damages or injuries resulted from the installation or use of this outlet camera device.

Before installing the outlet, please ensure that there's a Micro SD memory card installed on the back of the outlet cam if you plan on recording media locally. The outlet cam is installed as any common electrical outlet. **Please have a licensed electrician install the outlet camera device.**



Reset Button

On/Off Switch

MicroSD Card Slot

Power USB Port

I. Startup

The device can be powered by installing it to an electrical outlet or simply via USB.

Slide the ON/OFF switch to turn on the camera.

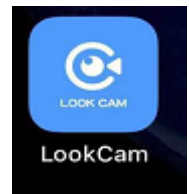
Look inside the MicroSD memory card slot for the hidden light.

A **red** light indicates that the camera device is on.

A blinking **blue** light indicates the WiFi is connected.

II. Download APP software

Search for APP software called LOOKCAM on the App Store or Google Play, download it and install it.

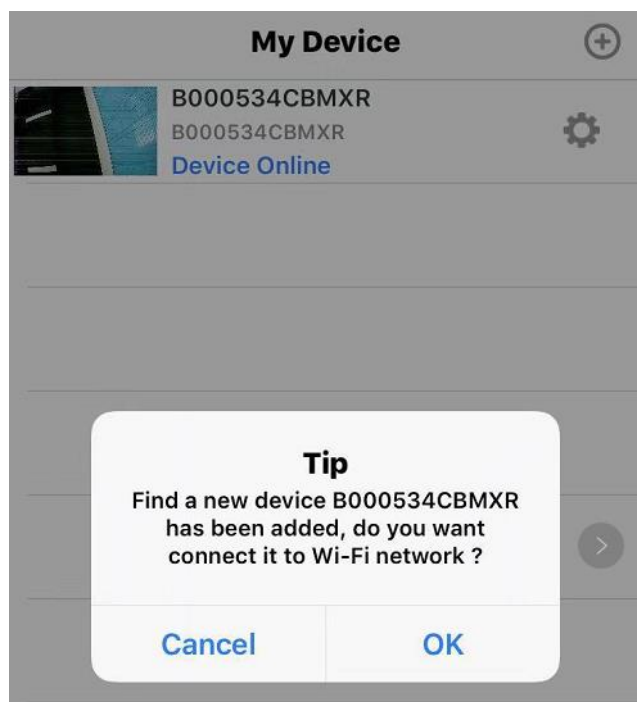


III. Hotspot connection of mobile phone to camera

Enter the mobile phone WI-FI settings, find the WiFi account (UID number) and connect. As shown in the figure

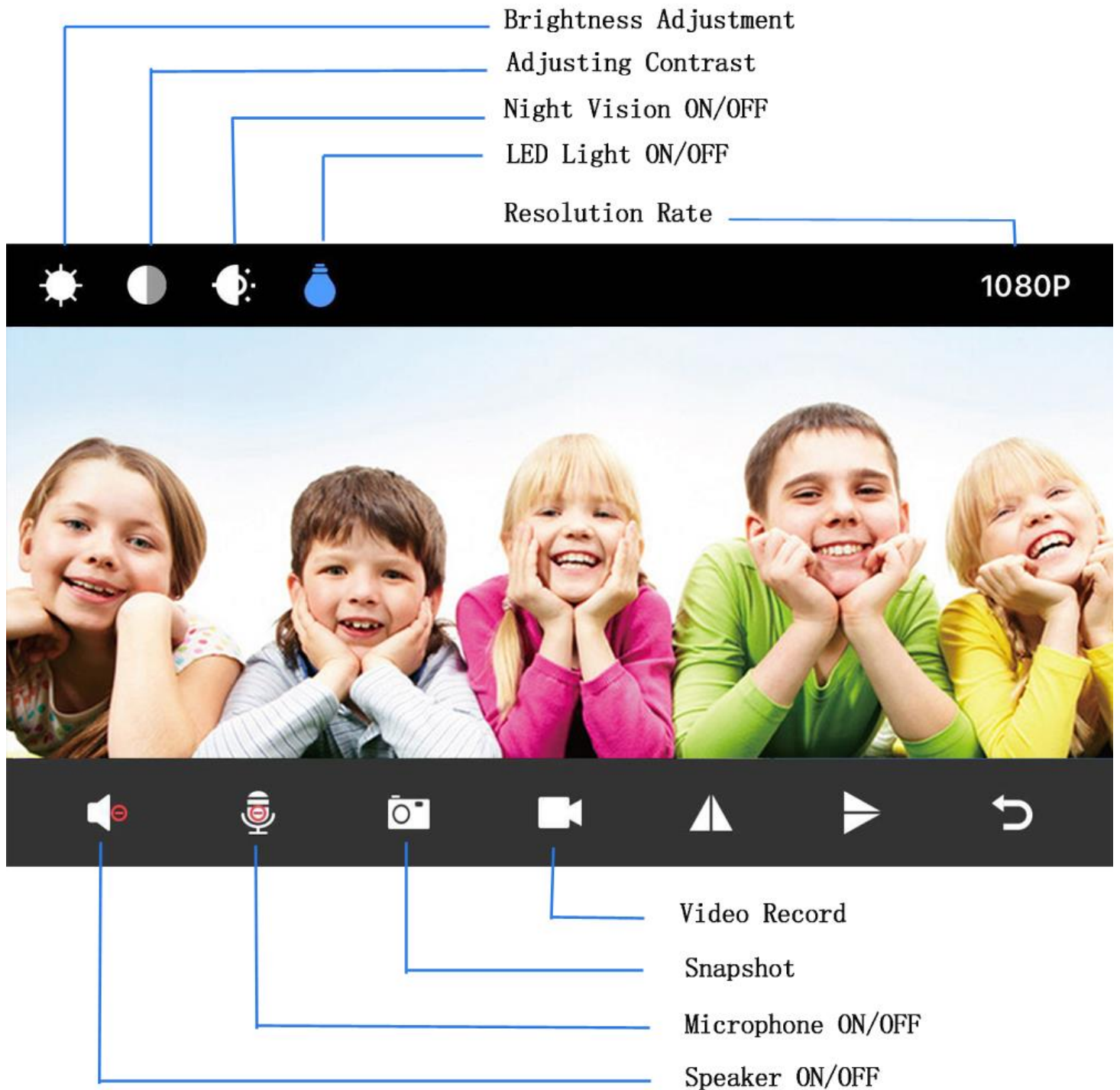


After the UID of the device is connected, open the phone APP (LOOKCAM). (As shown below)



It most likely will automatically detect the camera device and prompt you to connect to it. Tap "OK".

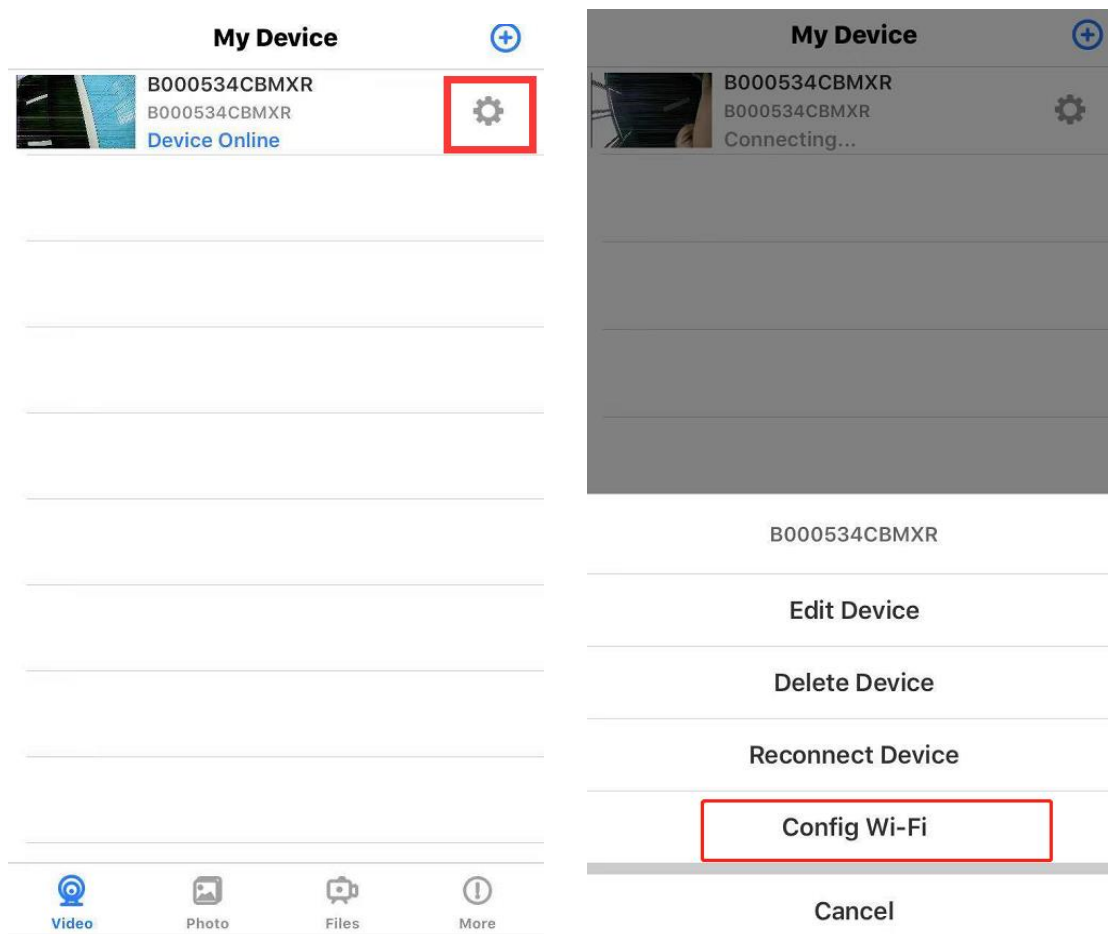
You should now be able to preview video in your phone.
By tapping on Device Online, you will see live video stream.



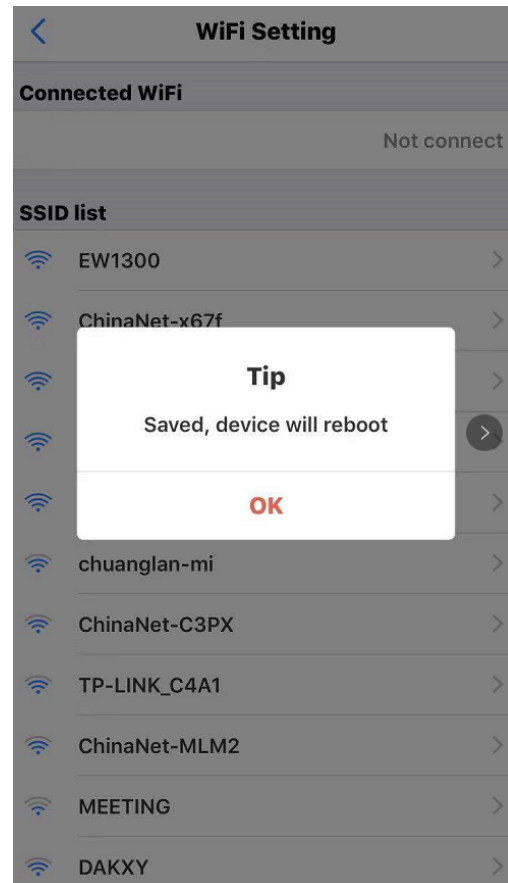
IV. Set up remote stream

So far you can only preview video if you are connected to the same local network. To access remotely, the camera needs to access your local network to connect to the internet and broadcast the video.

Click the setup icon → Advanced Configuration → WiFi Connection Configuration → Find WiFi → Enter Password → Click OK and the camera will restart automatically. (Wait for the camera to restart (about 40 seconds). The camera will change from offline to online, at which time the viewable video can be accessed remotely.)



Select your local WiFi network, and provide the password.



V. Quick Troubleshooter

- The camera supports up to 128 GB Micro SD card. Please use High Speed Class 10 FAT formatted memory card.
- You may have to format the Micro SD before using.
- Most issues can be fixed by resetting the device. Press and hold the reset button for 15, wait a few minutes for the WiFi to reboot.
- The default password, if needed, is **123456**
- This device does not work with a 5GHz network, please ensure your router has a 2.5GHz capability and that you are connecting to its 2.5GHz channel. Most routers transmit on both channels.

Product Specifications

| | |
|----------------------------------|--------------------------|
| Resolution Ratio | 1080P/720P/640P/320P |
| Video Format | AVI |
| Frame Number | 25 |
| Visual Angle | 150 /90 degree |
| Motion Detection Camera Shooting | Straight line 6 meters |
| Minimal Illumination | 0.1LUX |
| Video Duration | Over 1 Hours |
| Compressed Format | H.264 |
| Recording Range | 5m ² |
| Consumption | 380MA/3.7V |
| Storage Temperature | -20-80 degree centigrade |
| Operating Temperature | -10-60 degree centigrade |
| Operation Humidity | 15-85%RH |
| Memory Card Type | TF card |
| Player Software | VLCPlayer/SMPlayer |
| Computer Operating System | Windows/Mac OS X |
| Operating System | Android/iOS |
| | |
| | |