



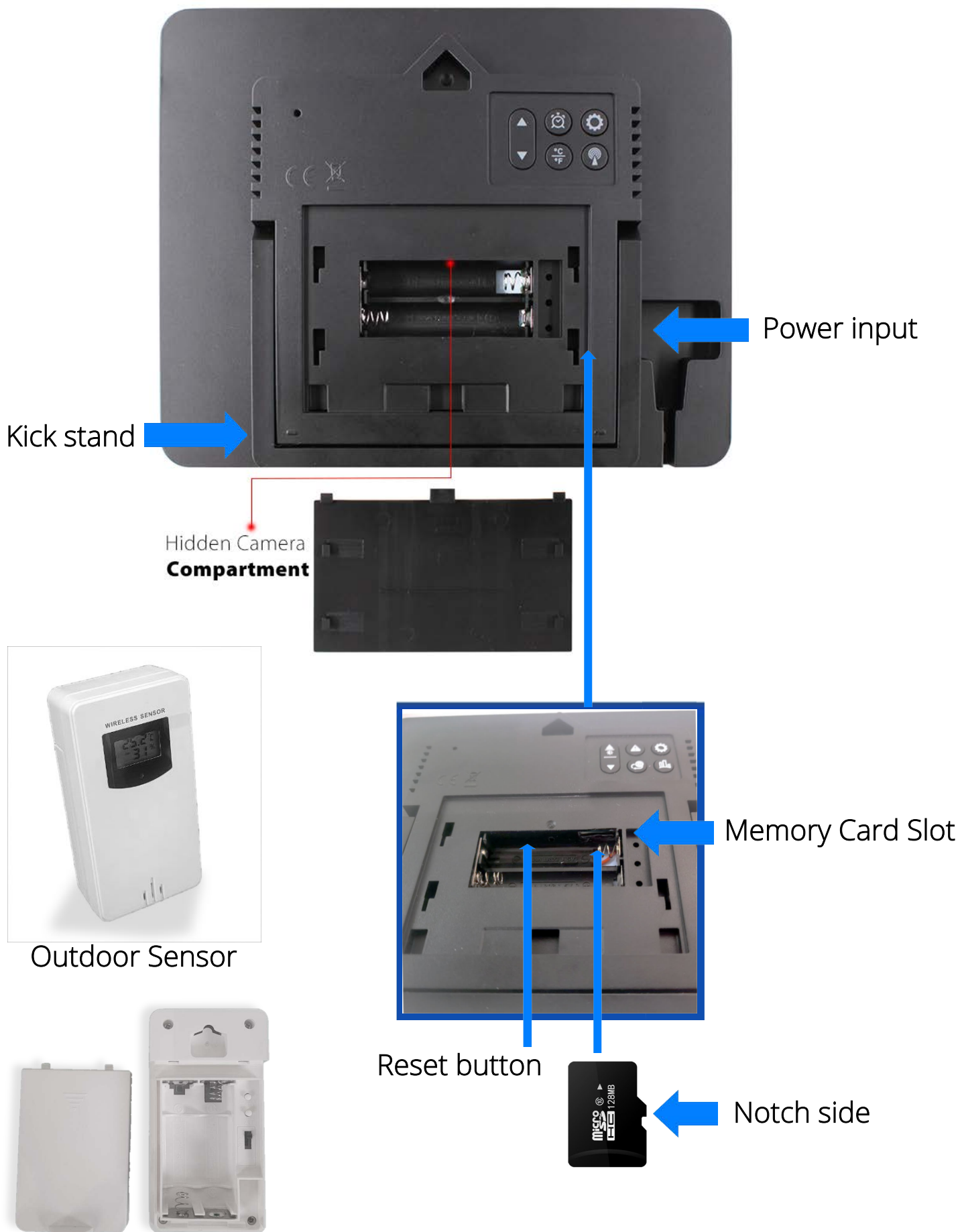
zWeatherStation

**WIFI Nanny Camera Weather Station
(500w-PRO)**

USER MANUAL

1. Camera Device Diagram	Page 1
Dicover Your Weather Station Camera Device	
2. Initial Setup	Page 2
Step-by-Step Guide to Get Started	
3. App Installation	Page 2
4. WiFi Connection Setup	Page 3
Instructions for Connecting to the station's Wi-Fi Hotspot	
5. Adding a Camera Device	Page 4
Instructions for Connecting to the station's Wi-Fi Hotspot	
6. App & Camera Features	Page 6
Using the Koios as a Standalone Hotspot Device Without Wi-Fi	
7. Recordering & Playback	Page 7
Guide to Recording and Retrieving Files from Your Media Card	
8. Troubleshooting Tips	Page 9
Quick Fixes for Common Issues	
9. Technical Specifications	Page 10
Detailed Camera Specifications and Requirements	

1. Camera Device Diagram



2. Initial Setup

Media Storage

Insert a MicroSD memory card as shown in the diagram. The card should click in place. To remove it simply press it down again to toggle it back out.

Power ON/OFF

Install AA batteries on the Outdoor sensor. The Station device can be powered with the included A/C adapter or 2 AAA batteries.

Camera Reset

Resetting the camera device to factory default will fix most issues. While the weather station is powered, use a pin or paperclip to press and hold the reset switch for 5 seconds, the camera device will restart with factory settings.

3. App Installation

I. Setting up the App

Download the **Tuya** app from Google Play or the App Store. You can scan the QR code or use the URL links below from your phone.



IOS



Android

Google Play / Android

<https://play.google.com/store/apps/details?id=com.view.ppcs>

App Store / iOS

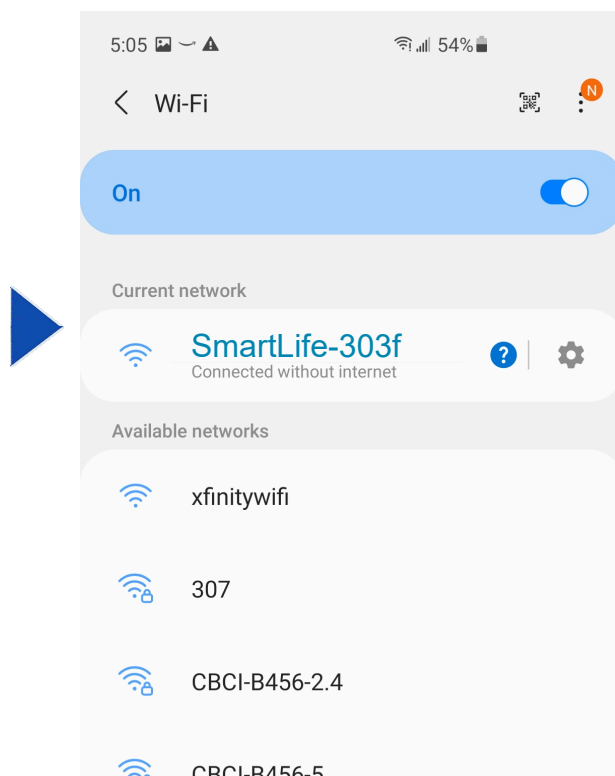
<https://apps.apple.com/us/app/lookcam/id1460758870?l=zh&ls=1>

4. WiFi Connection Setup

Ensure the weather station is powered on.

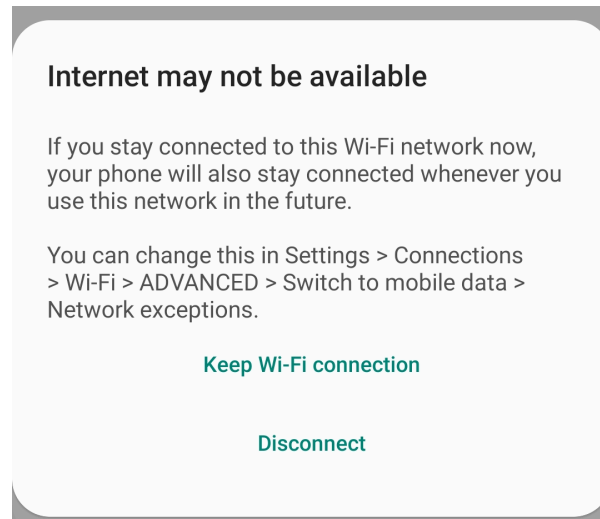
Please ensure to follow the previous step; **Camera Startup** to make sure the camera device is broadcasting it's own WiFi network.

In your smartphone, enter the mobile phone Wi-Fi settings, find the camera's WiFi network starting with the name **SmartLife** and connect to it.



NOTE: please ensure "Mobile data" and "Wi-Fi Assist" features are disabled to prevent your phone from automatically using another network.

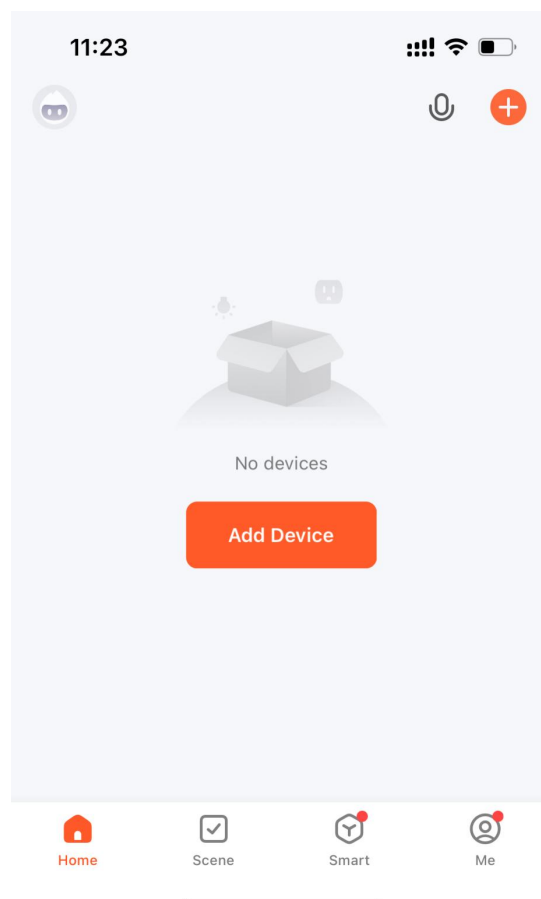
You may get a prompt warning that the internet is not available. If so, choose to **Keep Wi-Fi connection**.



Your phone should now be connected to the camera device.

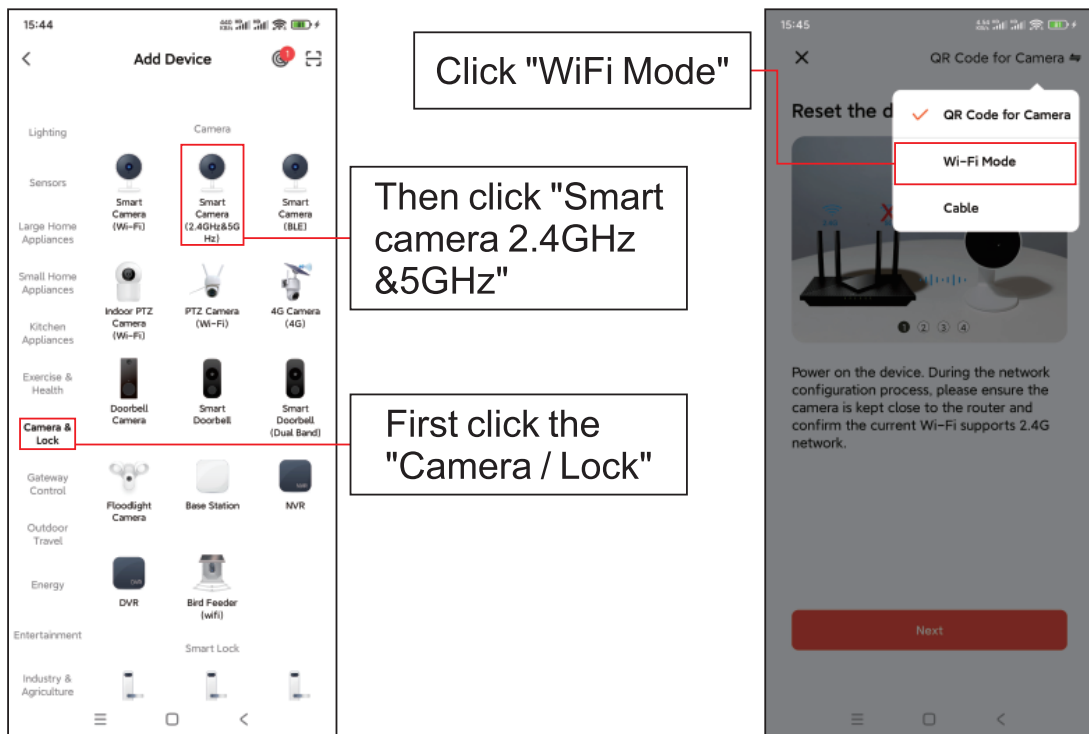
5. Adding a Camera Device

From the main menu, tap **Add Device**

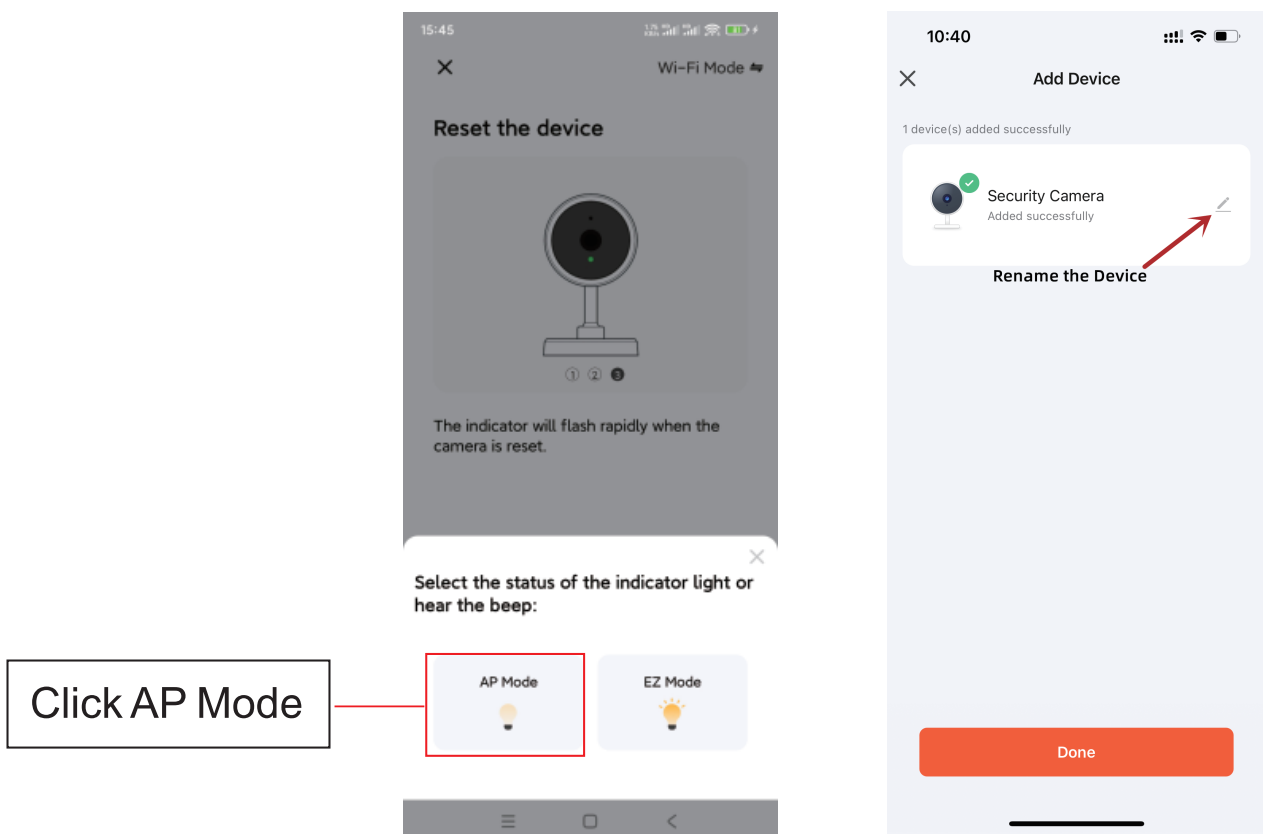


Next select **Camara & Lock**, then select **Smart camere 2.5Ghz & 5GHz** to add camerea.

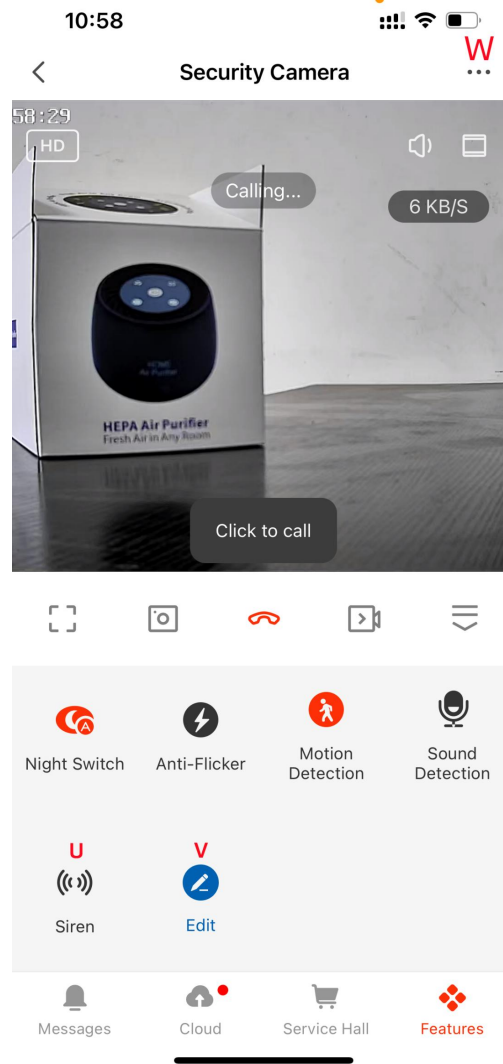
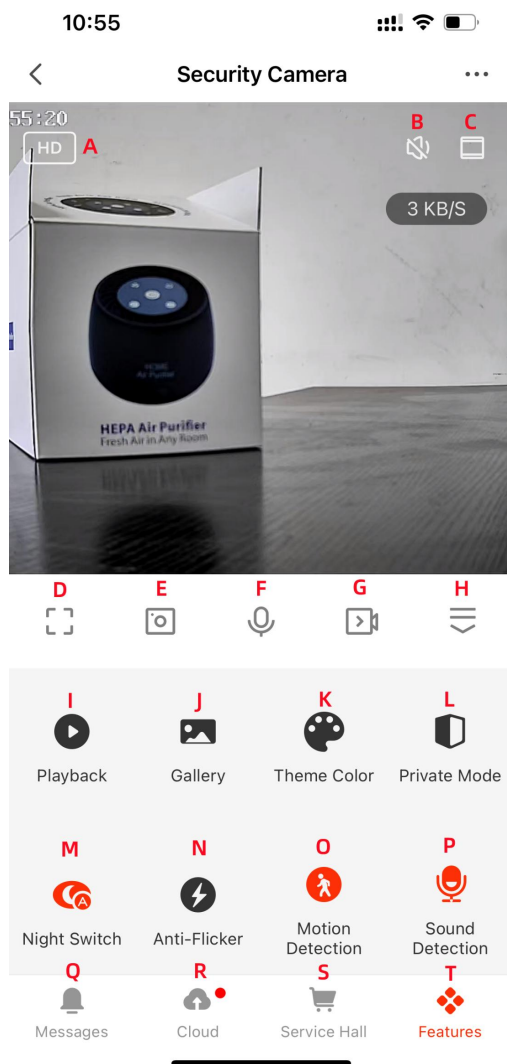
On the next menu, selet **Wifi Mode** from the drop down in the top right.



Follow the on-screen instructions for the indicator light. Then when you select **AP Mode**, the camera should be setup. You can then choose a name for the camera device.



6. App and Camera Features

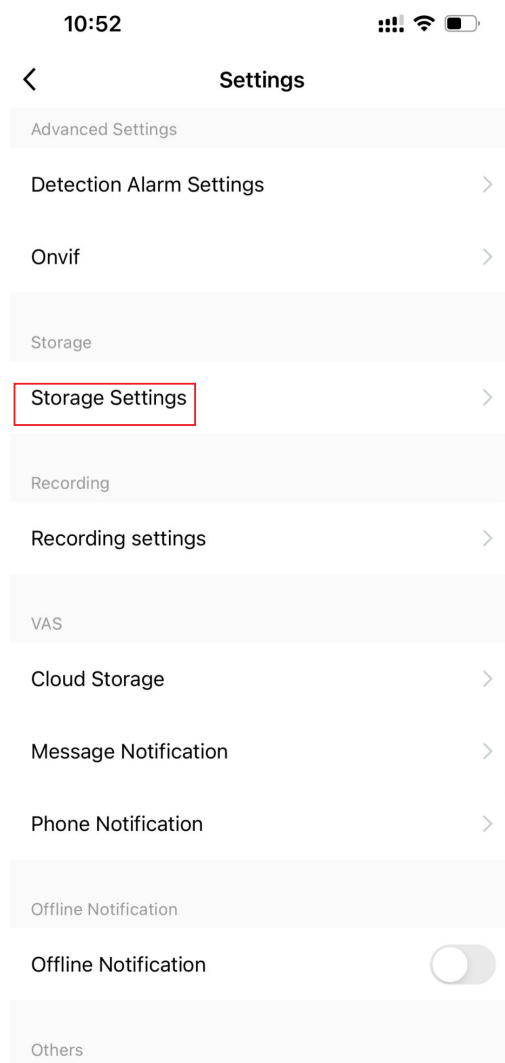


A	Shift Resolution: HD/SD	B	Speaker: ON/OFF
C	Landscape: Zoom In/Zoom Out	D	Full Screen: Zoom In/Zoom Out
E	Screenshot	F	Talkback
G	Recording	H	OSD Invisible
I	Playback	J	Gallery: Save the Screenshot or Recording
K	Theme Color: Bright/Dark	L	Private Mode: ON/OFF
M	Night Mode: Smart/IR/Color	N	Anti-Flicker: Close/50HZ/60HZ
O	Motion Detection: ON/OFF	P	Sound Detection: ON/OFF
Q	Messages: Detection message will be find in here	R	Cloud
S	Service Hall	T	Menu
U	Police whistle	V	Edit
W	Device Setting		

7. Recording & Playback

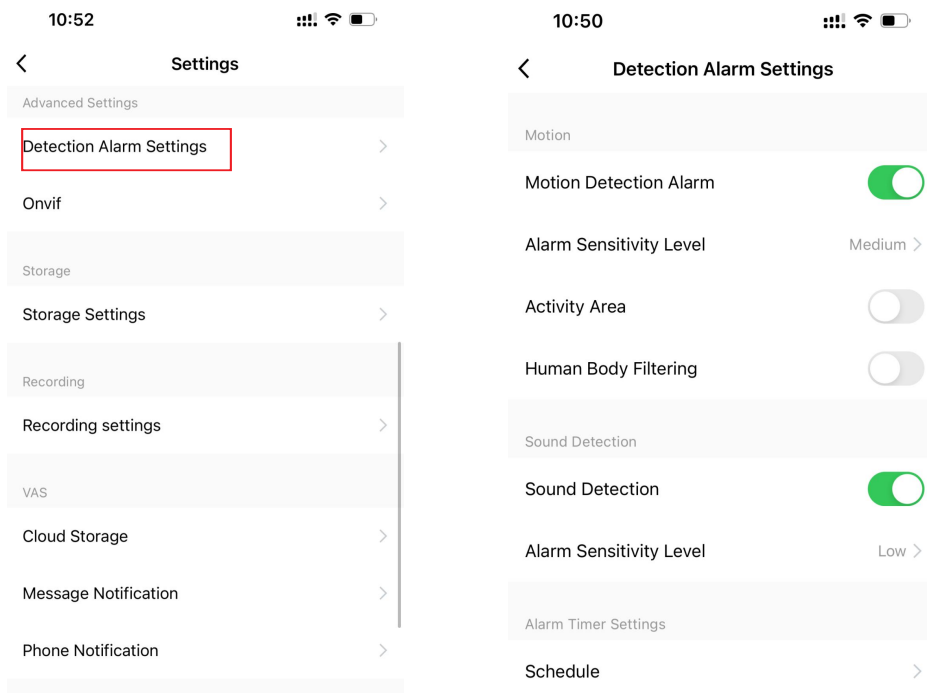
Recording Settings will only be available if a MicroSD card has been installed in the WeatherStation.

Choose Storage Settings to format the SD card or set up motion detection.



Motion Activated Video Recording

For video recording only when motion is detected, in the **SD Card Settings** menu turn on the **Motion Detection Alarm** setting.



Motion Detection Alarm:

On/Off

Alarm Sensitivity Level:

Low, Medium, High.

Activity Area:

Control the area of the Motion Detection.

Human Body Filtering:

Not available on this model

Sound Detection:

Not available on this model

Schedule:

Setting the time zone of Motion Detection.

Trigger Siren:

Uses a police siren

8. Troubleshooting Tips

Check memory card:

The camera supports up to 256 GB Micro SD card. Please use High Speed Class 10 FAT formatted memory card. You must format the Micro SD before using. If SD card is not recognized when inserted into the camera, simply remove and re-insert.

Camera offline:

1. Check power
2. Check if your router is working properly.
3. Weak Wi-Fi signal.
4. Wrong password wrong while Wi-Fi setting

Glitchy or stuttering video playback:

You should choose a suitable resolution to watch according to your internet speed. Internet connection interruption will also cause video to freeze.

Forgot password or password invalid:

Press and hold the reset button for 10 seconds to restore the camera device to the factory settings.

The initial password for each camera is **123456**. Please change the password to ensure the security of your camera.

NOTE: Passwords must consists of alphanumeric characters only.

If the camera cannot be connected to the router, please reset, and connect the hot spots before completing the configuration.

9. Technical Specifications

Video Resolution, Ratios	1080p, 720p, 640p, 320p @ 16/9 & 4/3
Video Format	AVI
Frame Rate	25 FPS
Viewing Angle	150 degree horizontally /90 vertically
Motion detection activation distance	Straight line, 6 meters
Minimal Illumination	1 LUX
Battery Life	~1 hour
Video Clip Segments	1, 2, 5, 30 minute video length
Video Encoder	H.264
Recording Range	5m ²
Current Consumption	380MA/3.7V
Storage Temperature	-20-80 degree centigrade
Operating Temperature	-10-60 degree centigrade
Operation Humidity	15-85%RH
Memory Card Type	TF card, MicroSD Card
Player Software	VLCPlayer/SMPlayer
Computer Operating System	Windows/Mac OS X
Mobile Phone Operating System	Android/iOS/Windows Mobile
Maximum Users	4