



zShades-1080p

Manual

Contents

Overview.....	Page 1
Setting Date and Time....	Page 2
Using the Camera.....	Page 4
Saving Video.....	Page 6
Changing the Lenses.....	Page 7
Formatting Memory.....	Page 8
Contact Us.....	Page 12
Warranty.....	Page 13

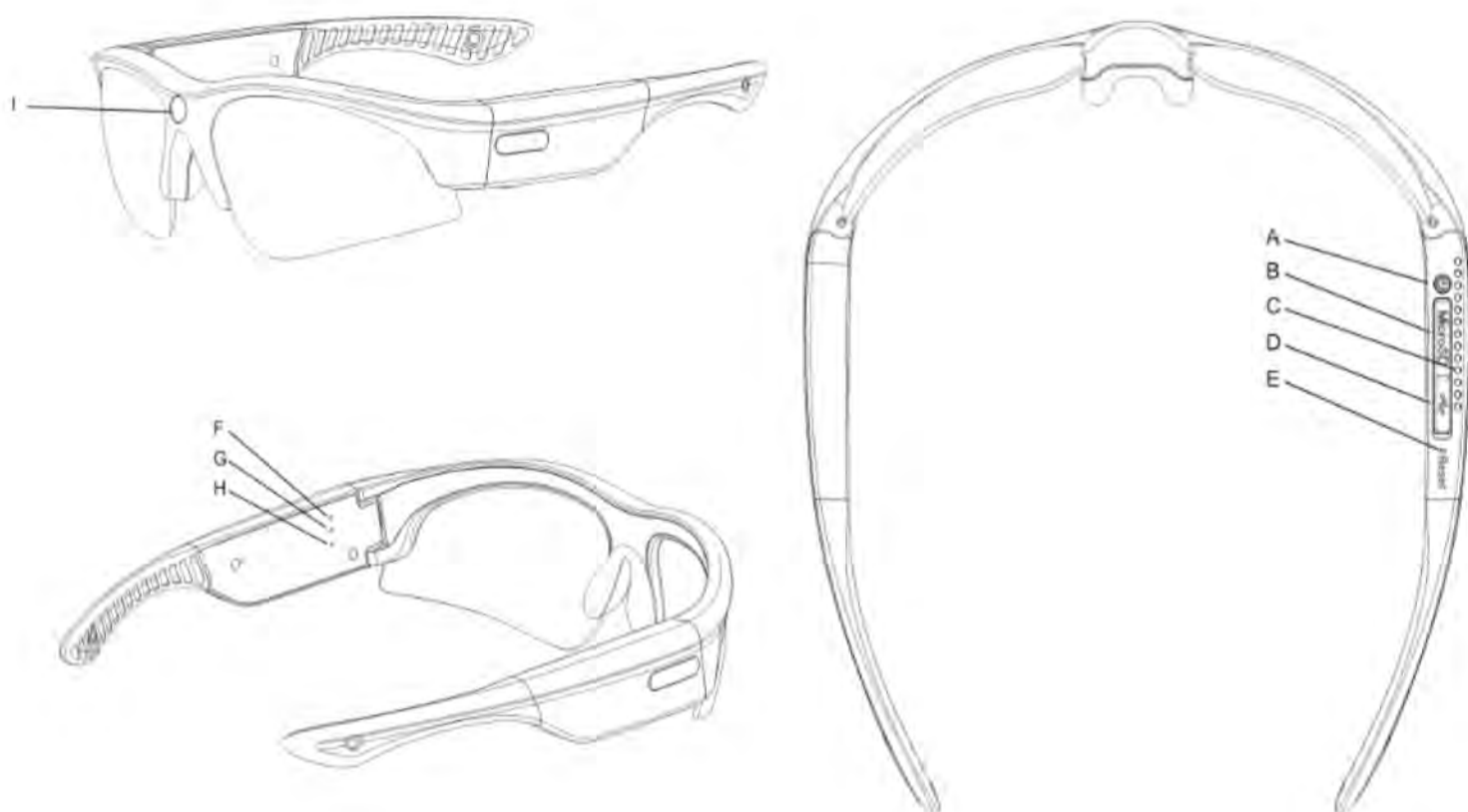
Overview

In The Box

zShades-1080p
Carrying Case
Carry Bag
Lanyard
Cleaning Cloth
USB Cable
USB Card Reader
Nose Pads

Product Diagram

- A. Control Button
- B. Micro SD Card Slot
- C. Heat Sink
- D. USB Port
- E. Reset
- F. Green LED
- G. Red LED
- H. Microphone
- I. Camera

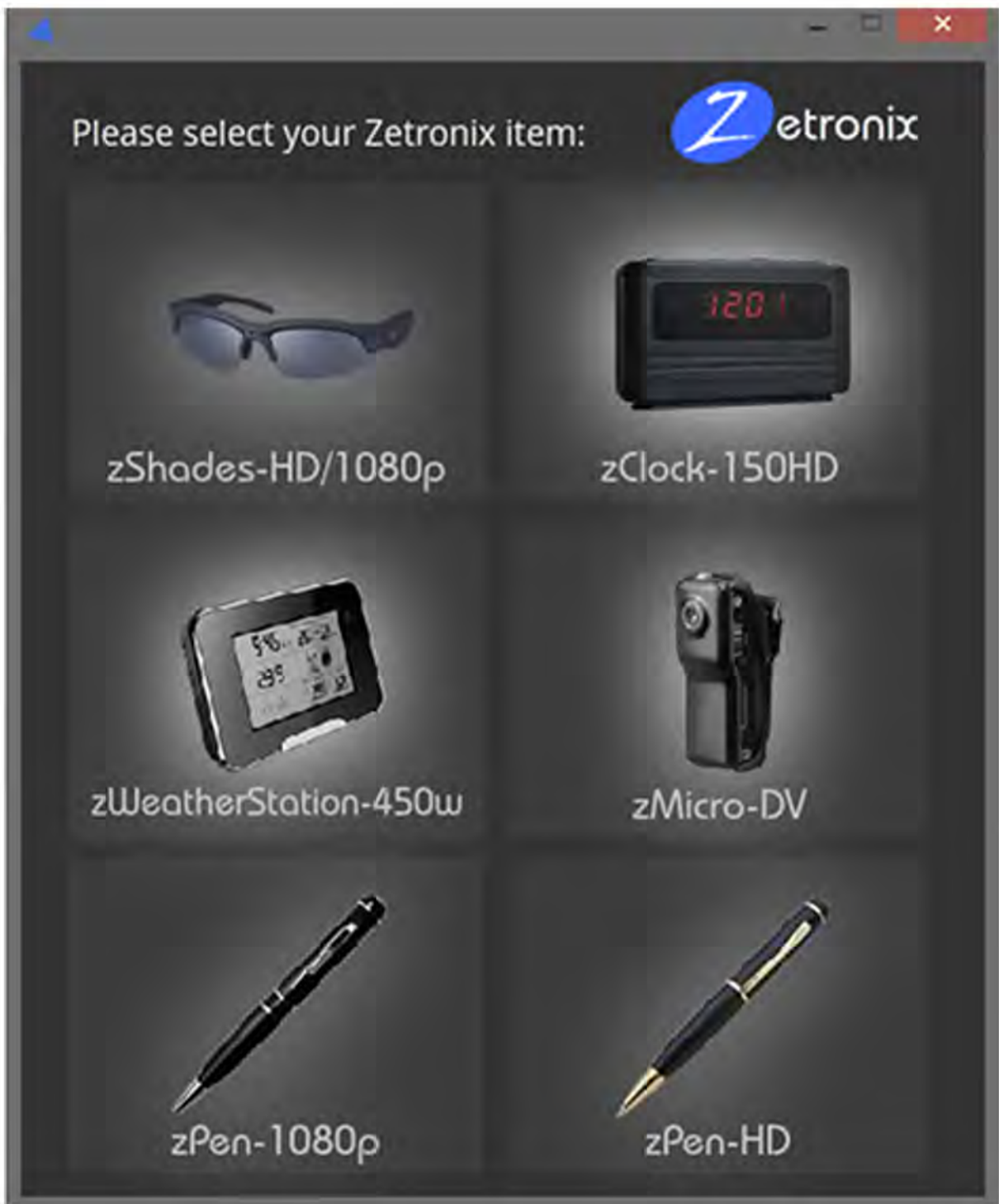


Setting Date and Time

Setting the Date and Time stamp for your videos is easy. Zetronix provides an easy-to-use application for both Windows and Mac that will automatically help you set up the time stamp.

It can be found at the following address.

<http://zetronix.com/download/>

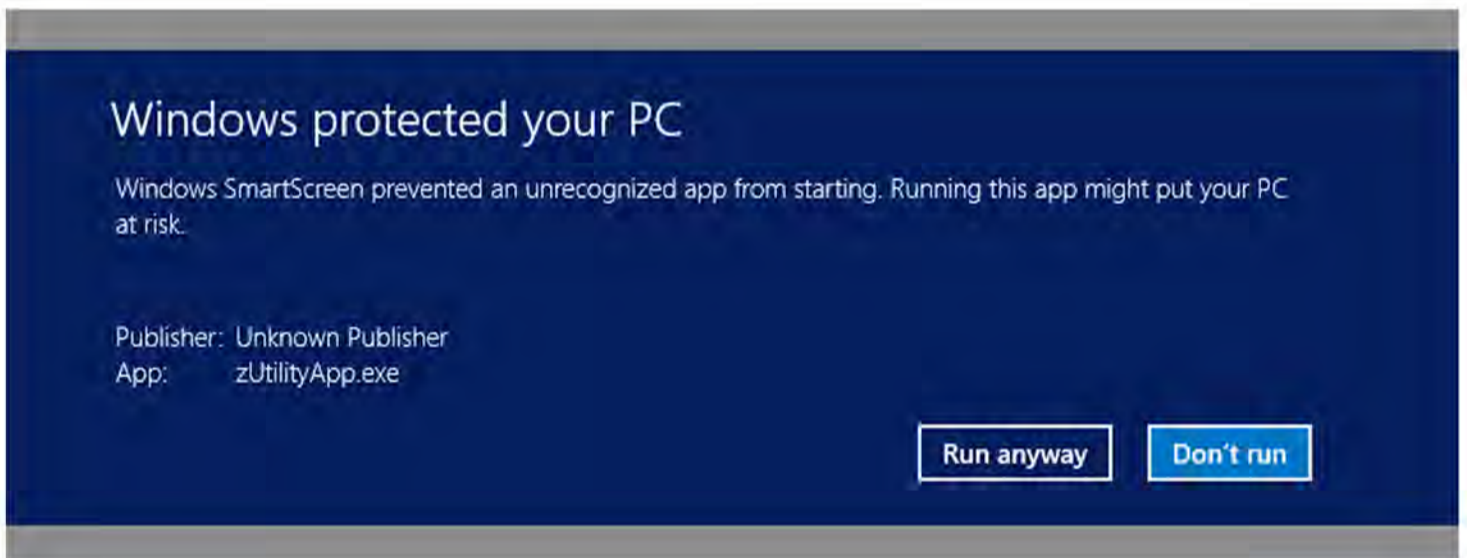


Setting Date and Time

On some systems you may get a warning during installation.

This is normal. Simply click RUN ANYWAY and continue with the process. On an Apple computer you may get a similar warning. Go into CONTROL PANEL and choose SECURITY. UNLOCK the security settings and choose ALLOW ALL.

Once you have installed the program, make sure you turn SECURITY SETTINGS back on.



Using the Camera

Power on and start recording

To turn on the zShades, press the control button for 1-2 seconds. The green LED will turn on and the zShades will boot up.

After 2-3 seconds, they will vibrate twice and the green LED will flash slowly to indicate that the glasses have automatically begun to record.

Stop recording and powering down

To stop and save your recording press the control button once and the glasses will enter standby mode. Your current video will be saved.

Pressing the button again will begin a new recording. While in standby mode, holding the control button down for 3 seconds will power off the glasses.

NOTE: Powering off the glasses while recording is possible however it will result in your current video not being saved.

Auto shut-off

When the battery is low or the memory is full, the green LED will blink very fast and the glasses will vibrate for 3 seconds and power off.

Using the Camera

Power on and start recording

To turn on the zShades, press the control button for 1-2 seconds. The green LED will turn on and the zShades will boot up.

After 2-3 seconds, they will vibrate twice and the green LED will flash slowly to indicate that the glasses have automatically begun to record.

Stop recording and powering down

To stop and save your recording press the control button once and the glasses will enter standby mode. Your current video will be saved.

Pressing the button again will begin a new recording. While in standby mode, holding the control button down for 3 seconds will power off the glasses.

NOTE: Powering off the glasses while recording is possible however it will result in your current video not being saved.

Auto shut-off

When the battery is low or the memory is full, the green LED will blink very fast and the glasses will vibrate for 3 seconds and power off.

Saving and Sharing Video

Memory

The zShades-1080p support class-10 micro-SD memory cards up to 64 GB



Connecting to computer

Connect the zShades to your PC or Mac computer via the USB connection.

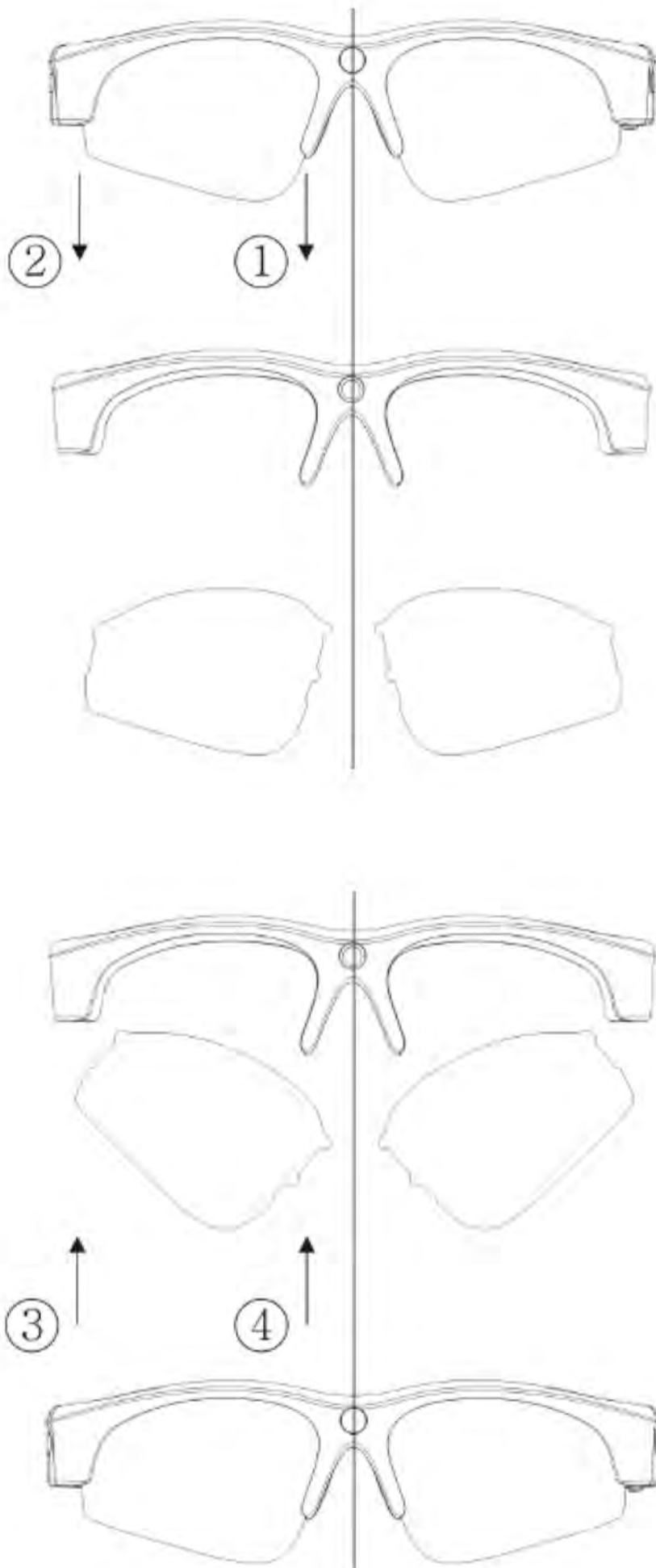
The glasses will appear as a 'Removable Drive' in your My Computer folder or in your finder. In the DCIM folder you will see a directory named VIDEO. Inside this folder you will find your video recordings. Drag them to your PC or Mac to save and edit. Delete them to make room on your glasses for more recordings.

NOTE: on a Mac computer, to delete files you must move them to the 'Recycle Bin' and then **EMPTY RECYCLE BIN** while the zShades are **STILL CONNECTED** to your computer. Failing to do this will result in your memory space not being emptied.

Changing the Lenses

Note: Remove the protective film on the lenses before wearing the sunglasses.

To remove the lenses, start on the nose side and pull the lens out (see below)



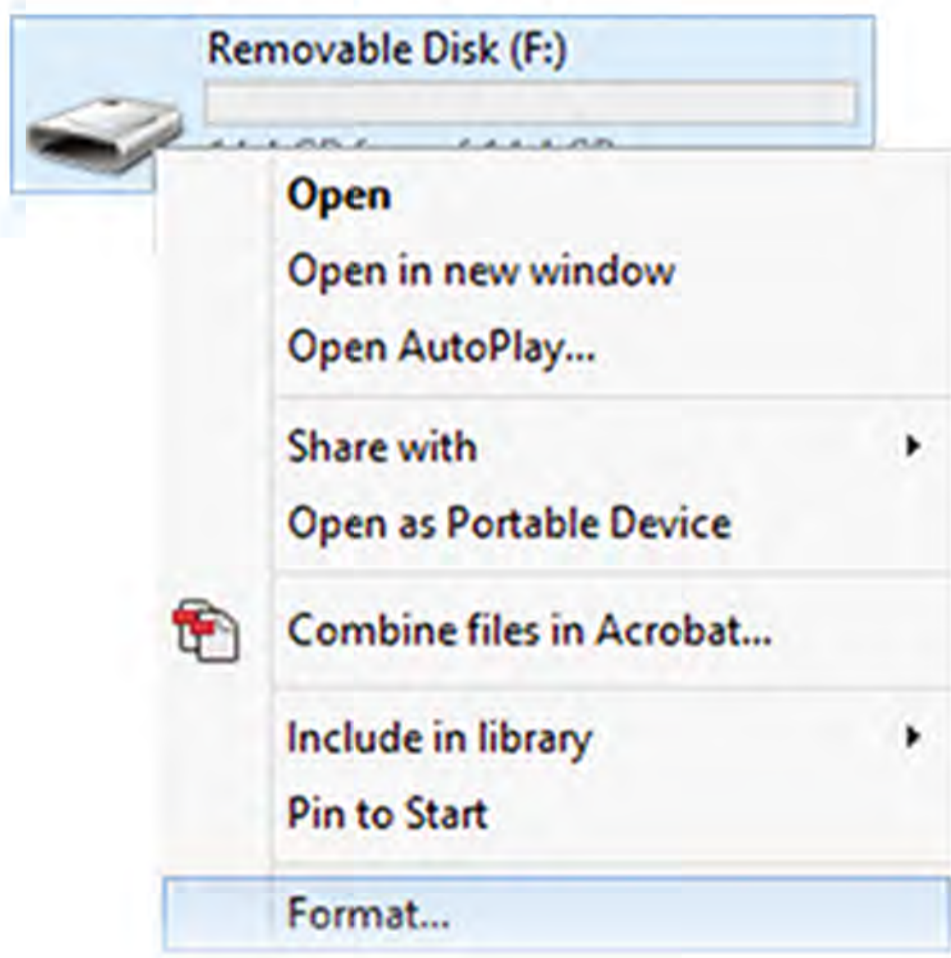
Formatting (Windows)

If your camera isn't recording to your memory card or is behaving strangely, try reformatting the memory card. Here are instructions.

Locate your hard drive directory.

It will be under **My Computer** or **This PC**. You can also open a new **File Explorer** window and your drives will be listed there. The camera will appear as a removable drive like this.

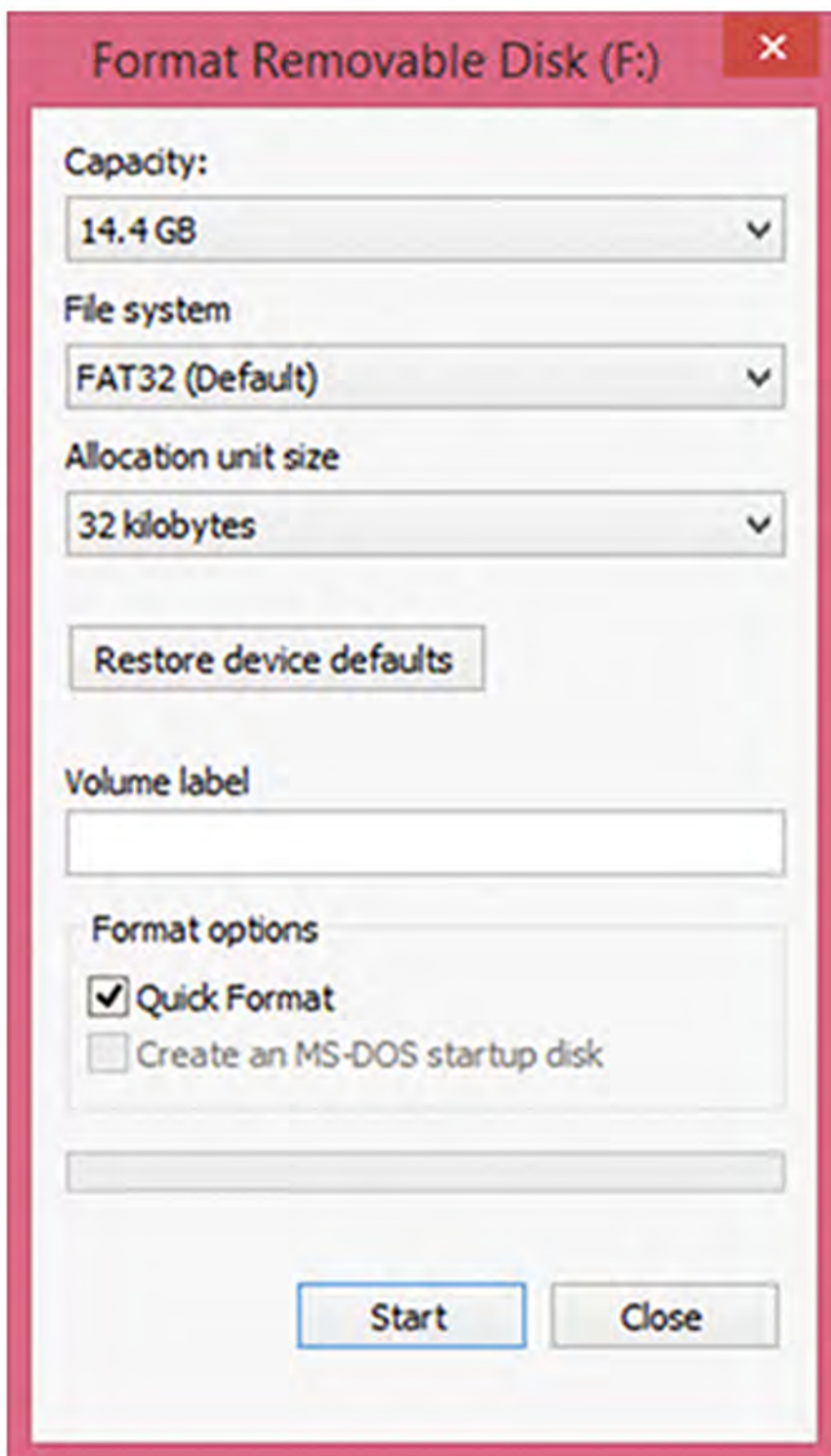
Right Click on the removable drive and select **Format**



Formatting (Windows)

From the options shown, make sure that you have selected **FAT32** or **EXFAT** as your file system. Leave other settings at their defaults. Click **Start**.

Any files on your card will be lost. Record at least one video with your camera to install the file directory to your card.



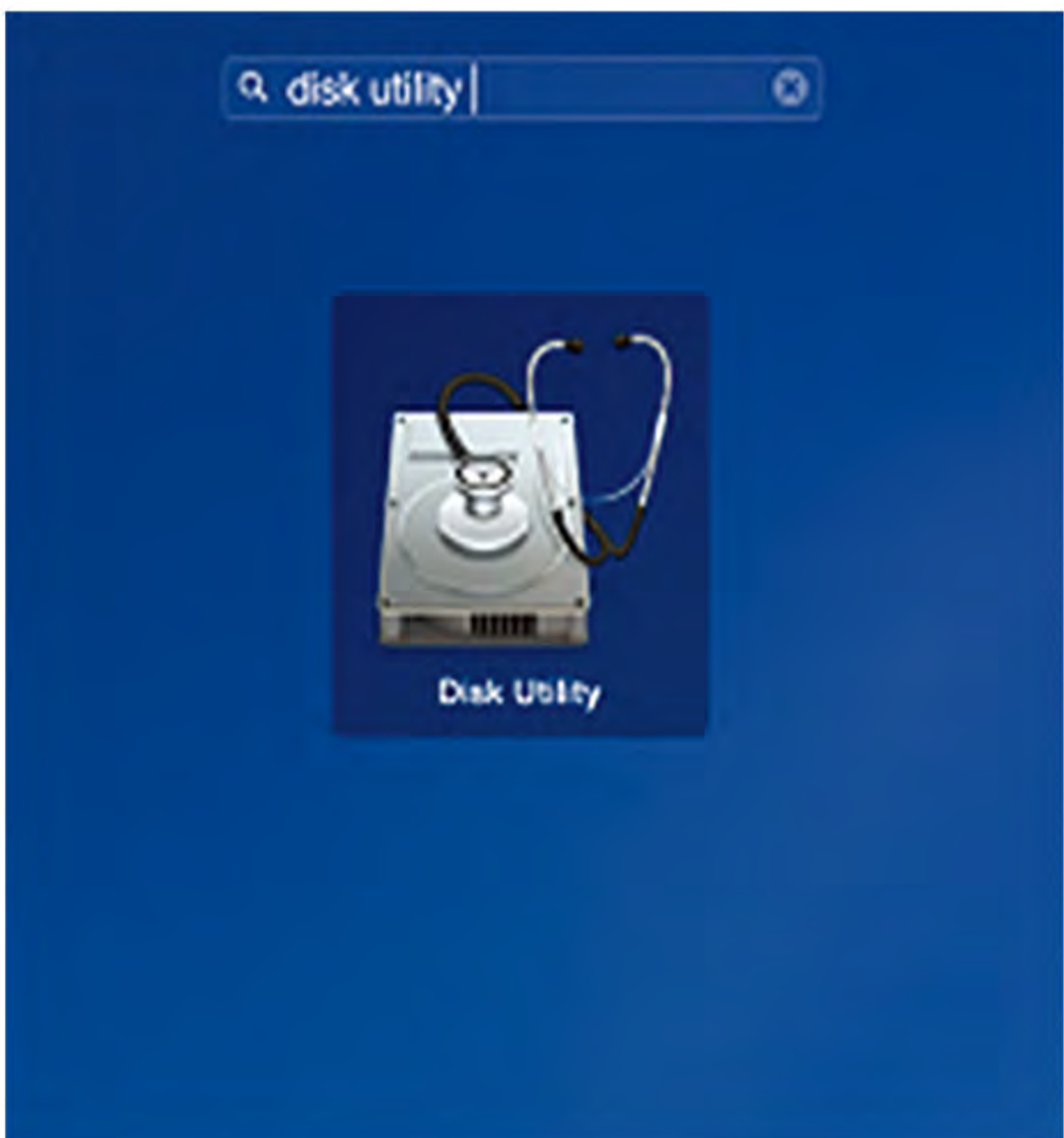
The image shows a screenshot of the Windows 'Format Removable Disk (F:)' dialog box. The window title is 'Format Removable Disk (F:)' with a close button (X) in the top right corner. The dialog contains the following settings:

- Capacity:** 14.4 GB (dropdown menu)
- File system:** FAT32 (Default) (dropdown menu)
- Allocation unit size:** 32 kilobytes (dropdown menu)
- Restore device defaults:** A button.
- Volume label:** An empty text input field.
- Format options:**
 - Quick Format
 - Create an MS-DOS startup disk
- Start** and **Close** buttons at the bottom.

Formatting (Mac)

Locate and open a program called **Disk Utility**. It is usually found by going into the application folder and opening the utility folder.

Applications>Utilities



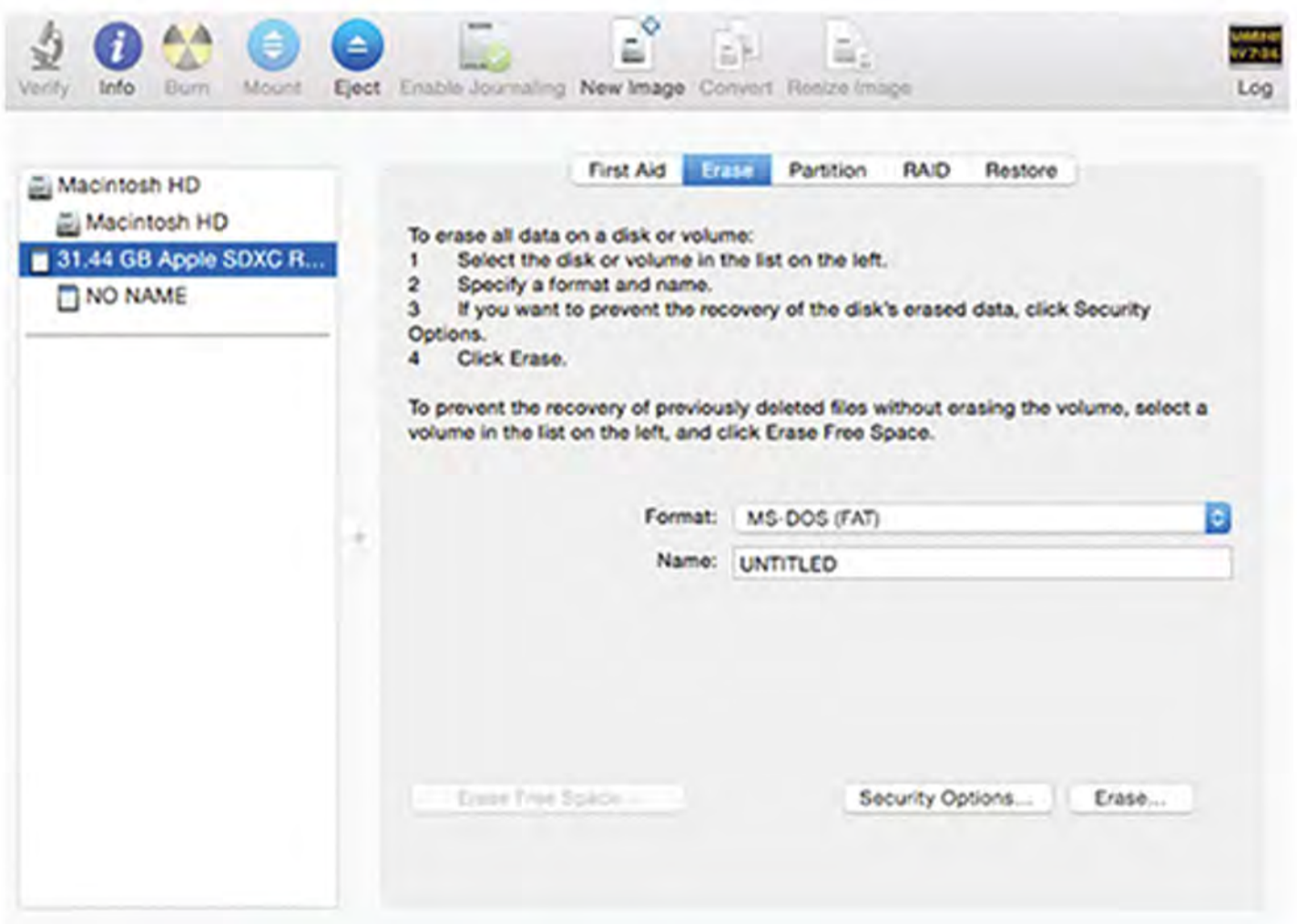
Formatting (Mac)

In **Disk Utility**, Select your camera removable drive from the list on the left.

From the options on the right click the menu button labeled **Erase** (highlighted in blue below) From the dropdown menu labeled **Format**, choose **MS-DOS (FAT)**.

You can name the drive whatever you like. When ready, click the button in the lower right corner labeled **Erase**.

Record a video of any length to reinstall the file system on the memory card.



Still Have Questions?

Do not return your camera

**For additional assistance contact
Zetronix Tech Support**

By Phone.....877-644-7592
By Email.....support@zetronix.com

1 Year Limited Warranty

Zetronix Corporation ("Zetronix") warrants this product against defects in material or workmanship as follows:

PRODUCT: Zetronix will repair this product with new or refurbished parts, free of charge, for a period of one (1) year from the date of original purchase in the event of a defect in materials or workmanship. **REPAIRS:** Zetronix will repair or replace defective parts used in the repair or replacement of this product with new or refurbished parts, free of charge, for a period equal to the remainder of the original limited warranty period on the original product, or for 60 days after the date of the repair or replacement, whichever is longer. This warranty is extended only to the original purchaser. Proof of purchase in the form of a bill of sale or receipted invoice, which is evidence that the unit is within the warranty period, must be presented to obtain warranty service. To obtain warranty service, you must take this product, or deliver the product freight prepaid, in either its original packaging or packaging affording an equal degree of protection, to Zetronix Corporation. See below for additional information. This warranty only covers failures due to defects in materials and workmanship, which occur during normal use.. The warranty does not cover damages, which occurred in shipment, cosmetic damage, damage that is attributable to acts of God, failures which are caused by products not supplied by the warrantor, or failures which result from accident, misuse, abuse, neglect, mishandling, faulty installation, misapplication, improper installation, operation or maintenance, alteration, modification, introduction of sand, humidity or liquids, line power surge, improper voltage supply, lightning damage, or subjecting the product to operating/environmental conditions in excess of the maximum values or below the minimum values set forth in the applicable specifications, or products serviced by anyone other than Zetronix. This warranty is invalid if the factory-applied serial number has been altered or removed from the product. This warranty does not cover products sold AS IS or WITH ALL FAULTS. This warranty excludes consumable parts such as batteries and power supplies.

Zetronix Corporation ("Zetronix") warrants this product against defects in material or workmanship as follows:

PRODUCT: Zetronix will repair this product with new or refurbished parts, free of charge, for a period of one (1) year from the date of original purchase in the event of a defect in materials or workmanship. **REPAIRS:** Zetronix will repair or replace defective parts used in the repair or replacement of this product with new or refurbished parts, free of charge, for a period equal to the remainder of the original limited warranty period on the original product, or for 60 days after the date of the repair or replacement, whichever is longer. This warranty is extended only to the original purchaser. Proof of purchase in the form of a bill of sale or receipted invoice, which is evidence that the unit is within the warranty period, must be presented to obtain warranty service. To obtain warranty service, you must take this product, or deliver the product freight prepaid, in either its original packaging or packaging affording an equal degree of protection, to Zetronix Corporation. See below for additional information. This warranty only covers failures due to defects in materials and workmanship, which occur during normal use.. The warranty does not cover damages, which occurred in shipment, cosmetic damage, damage that is attributable to acts of God, failures which are caused by products not supplied by the warrantor, or failures which result from accident, misuse, abuse, neglect, mishandling, faulty installation, misapplication, improper installation, operation or maintenance, alteration, modification, introduction of sand, humidity or liquids, line power surge, improper voltage supply, lightning damage, or subjecting the product to operating/environmental conditions in excess of the maximum values or below the minimum values set forth in the applicable specifications, or products serviced by anyone other than Zetronix. This warranty is invalid if the factory-applied serial number has been altered or removed from the product. This warranty does not cover products sold AS IS or WITH ALL FAULTS. This warranty excludes consumable parts such as batteries and power supplies.