

NEPTUNE

HIDDEN CAMERA BOTTLE



Contents

In the Box Page 1

Diagram Page 2

Getting Started Page 3

Camera Operation Page 7

Media Playback Computer Page 8

Date & Time Stamp Settings Page 9

Troubleshooting Page 10

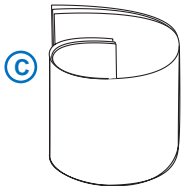
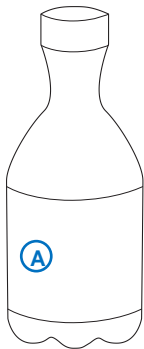
Formatting on PC Page 11

Formatting on Mac Page 13

Product Specifications Page 15

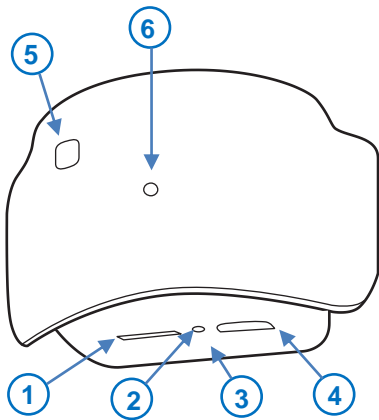
Warranty Page 16

IN THE BOX



- A.** 1x Bottle
- B.** 1x USB cable
- C.** 1x Extra Labels
- D.** 1x This Manual
- E.** 1X Camera Device

DIAGRAM



- | | |
|------------------------------|--------------------------|
| 1 Micro USB Card Slot | 4 USB Port |
| 2 Reset pinhole | 5 Function Button |
| 3 Hidden blue Light | 6 Camera Lens |

Charge the Camera Device

Please fully charge the camera before operation.

Connect the included USB cable (**B**) to an USB AC Charger, and to the bottle Camera Device's USB Port **4**.

While charging the blue light **3** will blink slowly. Once fully charged the light will stay on solid.

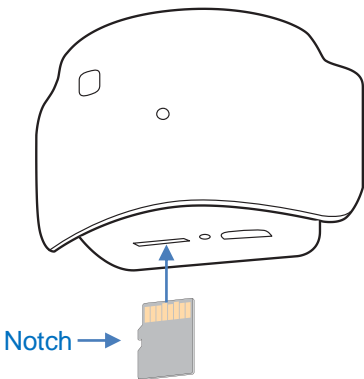
Connect a micro SD memory card.

A Micro SD memory card is required to record video files to.

To insert the memory card, hold the camera device (**E**) with the camera lens **6** facing you. The memory card's gold pins should also be facing you, with the card notch towards the left.

GETTING STARTED

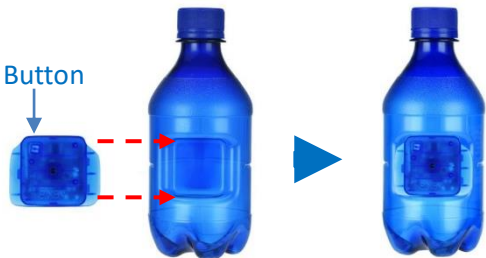
Push the card all the way into the card slot **1** until you feel a click. You may have to use your fingernail or a small tool.



To remove the card, simply push it further in again so it toggles back out.

Hide the Camera

Place the camera device in the bottle's depression; Ensure the function button **5** is towards the top of the bottle.



Next use one of the included labels (**C**) to wrap it around the bottle while holding the camera device in place.

GETTING STARTED

Make sure the hole on the label lines up with the camera lens ⑥.



Since the function ⑤ button will be hidden behind the label, you will have to poke around about half inch above the camera hole until you feel it click. It should be right on top of the "tto" at the end of the word "SanBeweketto".



Turning the camera ON/OFF.

To turn on the camera device, press and hold the Function Button **5** for 3 seconds. The Blue light **3** will come on indicating the camera is on stand-by.

To turn off the device, simply press and hold the Function button **5** again for 3 seconds again, the blue light **3** should go out.

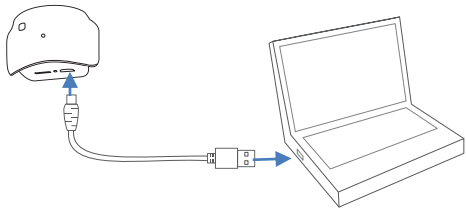
Recording Video

After turning on the device, while on stand-by (solid blue light), quickly press the function button **5** to start the recording. The blue light **3** will flash 3 times and go out, indicating video is being recorded.

By quickly hitting the function button **5** again, the camera will pause recording and go back to stand by; solid blue light.

MEDIA PLAYBACK

To view the recorded videos, connect the Camera Device to your computer by connecting the included USB cable (**B**) to the Camera's USB port **4** and your computer's USB port.



In 30 seconds your computer should prompt you with options for viewing the files. If it doesn't, please browse the files from "This PC", "My Computer", or "File Explorer" if using a windows system, or look for a new drive in your desktop if using Mac OS.

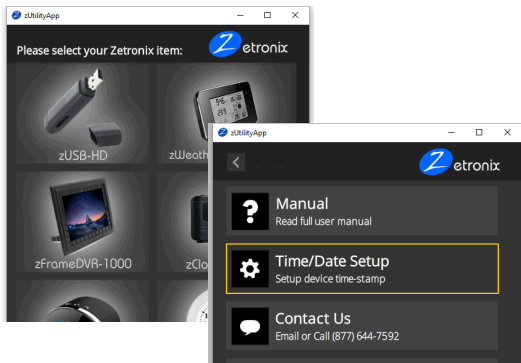
For playback we currently recommend a free program called VLC Player, found at www.videolan.org

DATE/TIME STAMP

To update or remove the video date/time stamp watermark on the video recording, please download the zUtility App from the Zetronix website.

<https://www.zetronix.com/download>

After downloading and installing the App, you will be prompted to choose the device. From here choose the zBottle, choose Time/date Setup and follow the on-screen instructions.



Most issues can be solved by formatting the memory card or by resetting the camera

Formatting the memory:

WARNING: formatting the memory will wipe out all the recorded media previously stored.

Formatting the memory will clean up any file corruption that may exist preventing the device from operating correctly.

Please refer to Page 11 or 13 on how to format the memory card.

Resetting the Camera

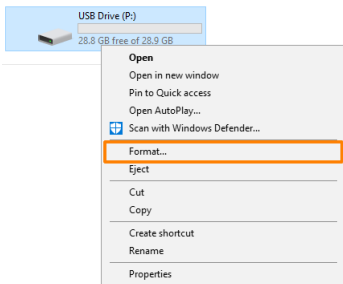
Using a paperclip or a pin press and hold the hidden pinhole switch **2** for about 10 seconds.

FORMATTING ON A PC

First ensure that the memory card is in the camera device, connect the camera to your PC as instructed on page 8 of this manual.

Locate your hard drive directory. It will be under "My Computer" or "This PC". You can also open a new File Explorer window and your drives will be listed there. The memory card will appear as a "Removable Drive" or "USB Drive".

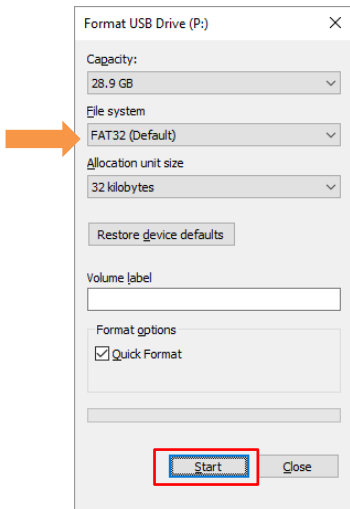
Right Click on the removable drive and select Format.



FORMATTING ON A PC

From the options shown, make sure that you have selected FAT32 as your file system. Leave other settings at their defaults.

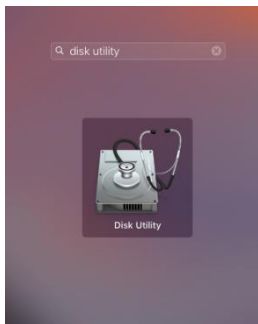
Click Start. After a few seconds the memory will be formatted.



FORMATTING ON A MAC

First ensure that the memory card is in the camera device, connect the camera to your Computer as instructed on page 8 of this manual.

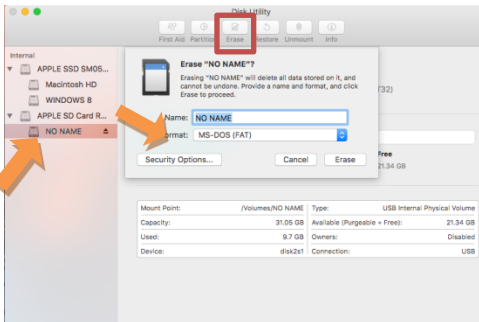
Locate and open a program called "Disk Utility". It is usually found by going into the application folder and opening the utility folder.



App Locations -> Utilities

FORMATTING ON A MAC

In Disk Utility, Select the drive from the list on the left. Most likely named "NO NAME".



Along the top of the window menu, click on the button labeled **Erase** (highlighted in the square above)

From the dropdown menu labeled Format, choose **MS-DOS (FAT)**.

When ready, click the button in the lower right corner labeled **Erase**.

After a few seconds the memory will be formatted.

PRODUCT SPECIFICATIONS

Item	Parameter
Sensor	2 Megapixel
Video Resolution	1920x1080
Video Format	AVI
Frame Rate	30 FPS
Memory Capacity	64GB MicroSD
USB type	Micro USB / USB 2.0
Mobile OS Support	Android / iOS
Desktop OS	Winsows 7,8,10/Mac OS X

1Year Limited Warranty

Zetronix Corporation ("Zetronix") warrants this product against defects in material or workmanship as follows: **PRODUCT:** Zetronix will repair this product with new or refurbished parts, free of charge, for a period of one (1) year from the date of original purchase in the event of a defect in materials or workmanship. **REPAIRS:** Zetronix will repair or replace defective parts used in the repair or replacement of this product with new or refurbished parts, free of charge, for a period equal to the remainder of the original limited warranty period on the original product, or for 60 days after the date of the repair or replacement, whichever is longer. This warranty is extended only to the original purchaser. Proof of purchase in the form of a bill of sale or receipted invoice, which is evidence that the unit is within the warranty period, must be presented to obtain warranty service. To obtain warranty service, you must take this product, or deliver the product freight prepaid, in either its original packaging or packaging affording an equal degree of protection, to Zetronix Corporation. See below for additional information. This warranty only covers failures due to defects in materials and workmanship, which occur during normal use.

The warranty does not cover damages, which occurred in shipment, cosmetic damage, damage that is attributable to acts of God, failures which are caused by products not supplied by the warrantor, or failures which result from accident, misuse, abuse, neglect, mishandling, faulty installation, misapplication, improper installation, operation or maintenance, alteration, modification, introduction of sand, humidity or liquids, line power surge, improper voltage supply, lightning damage, or subjecting the product to operating/environmental conditions in excess of the maximum values or below the minimum values set forth in the applicable specifications, or products serviced by anyone other than Zetronix. This warranty is invalid if the factory-applied serial number has been altered or removed from the product. This warranty does not cover products sold AS IS or WITH ALL FAULTS. This warranty excludes consumable parts such as batteries and power supplies. Zetronix Corporation ("Zetronix")

warrants this product against defects in material or workmanship as follows: **PRODUCT:** Zetronix will repair this product with new or refurbished parts, free of charge, for a period of one (1) year from the date of original purchase in the event of a defect in materials or workmanship. **REPAIRS:** Zetronix will repair or replace defective parts used in the repair or replacement of this product with new or refurbished parts, free of charge, for a period equal to the remainder of the original limited warranty period on the original product, or for 60 days after the date of the repair or replacement, whichever is longer. This warranty is extended only to the original purchaser. Proof of purchase in the form of a bill of sale or receipted invoice, which is evidence that the unit is within the warranty period, must be presented to obtain warranty service. To obtain warranty service, you must take this product, or deliver the product freight prepaid, in either its original packaging or packaging affording an equal degree of protection, to Zetronix Corporation. See below for additional information. This warranty only covers failures due to defects in materials and workmanship, which occur during normal use.

The warranty does not cover damages, which occurred in shipment, cosmetic damage, damage that is attributable to acts of God, failures which are caused by products not supplied by the warrantor, or failures which result from accident, misuse, abuse, neglect, mishandling, faulty installation, misapplication, improper installation, operation or maintenance, alteration, modification, introduction of sand, humidity or liquids, line power surge, improper voltage supply, lightning damage, or subjecting the product to operating/environmental conditions in excess of the maximum values or below the minimum values set forth in the applicable specifications, or products serviced by anyone other than Zetronix. This warranty is invalid if the factory-applied serial number has been altered or removed from the product. This warranty does not cover products sold AS IS or WITH ALL FAULTS. This warranty excludes consumable parts such as batteries and power supplies.

Still Have Questions?

**Do not return your
camera**

For additional assistance contact
Zetronix Tech Support

By Phone.....877-644-7592

By Email.....support@Zetronix.com

Live Chat at Zetronix.com

9AM-5PM EST

Monday to Friday

<http://help.zetronix.com>

©2018 Zetronix Corp.