



# Phoibe

AC Wall Charger  
with Hidden Camera



# MANUAL





US



Euro



UK



Australia

## In the Box:

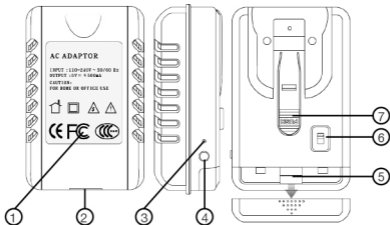
**Camera**

**User Manual**

**Micro SD Card reader**

**International power adapters**

## Product structure:



- 1.Camera    2.USB power output 【 $\leq 1000\text{mA}$ 】    3.Indicator light  
4.Pause / OFF button    5.Micro SD card slot  
6. Continuously / Motion detection recording  
7.Change plug button



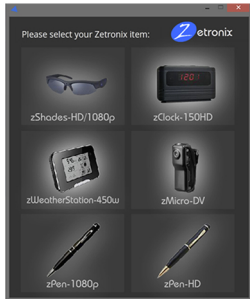
# Setting the Date and Time

**Setting the Date and Time stamp for your videos is easy.**

**Zetronix provides an easy-to-use application for both Windows and Mac that will automatically help you set up the time stamp.**

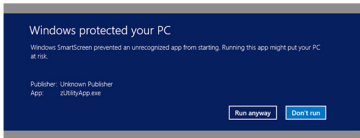
**It can be found at the following address.**

<http://zetronix.com/download/>



# Setting the Date and Time

**On some systems you may get a warning during installation.**



**This is normal. Simply click RUN ANYWAY and continue .**

**On an Apple computer you may get a similar warning.  
Go into CONTROL PANEL and choose SECURITY.  
UNLOCK the security settings and choose ALLOW ALL.**

**Once you have installed the program, make sure you turn SECURITY SETTINGS back on.**

# Operation

Insert a Micro SD Memory Card into the card slot.

## Continuous Recording Mode

Put the Recording Mode Switch into the "C" position.

Plug the unit into the wall.

The blue LED indicator will blink five times to indicate a recording has started. The camera will record continuously until you press the Pause/Off button to pause recording and put the camera into standby mode.

The blue LED will be solid while the camera is in standby mode. Press the Pause/Off button again to resume. The LED will blink blue twice and turn off to indicate that it is recording again.

# Operation

## Motion Detection Recording Mode

Put the Recording Mode Switch into the "M" position.

Plug the unit into the wall. The Blue LED indicator will BLINK three times and the Red LED will blink once and then turn off to indicate a recording has started.

When motion is detected the camera will record for 3 minutes. If no more motion is detected within 3 minutes, the camera will stop recording. Press the Pause/Off button to pause all recording and enter standby mode, the Red LED will be solid while the camera is in standby mode. Press the Pause/Off button again to resume. The Red LED will turn off to indicate that it is recording again.

## Powering Off Camera

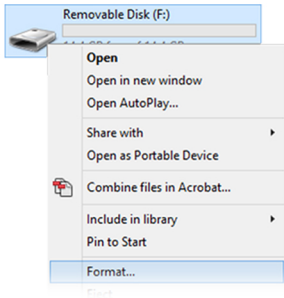
Hold the Pause/Off button for 5 seconds. The Indicator will blink 3 times and turn off.

# Formatting Memory (Windows)

Locate your hard drive directory.

It will be under **My Computer** or **This PC**. You can also open a new **File Explorer** window and your drives will be listed there. The camera will appear as a removable drive like this.

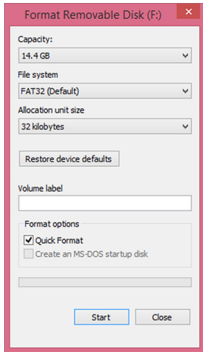
**Right Click** on the removable drive and select **Format**



# Formatting Memory (Windows)

From the options shown, make sure that you have selected **FAT32** or **EXFAT** as your file system. Leave other settings at their defaults. Click **Start**.

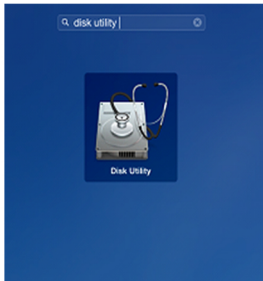
Any files on your card will be lost including your time-stamp settings. Record at least one video with your camera to install the file directory on your card. After you have restored the directory you can reinstall the time-stamp settings.



# Formatting Memory (Mac)

Locate and open a program called **Disk Utility**. It is usually found by going into the application folder and opening the utility folder.

Applications>Utilities

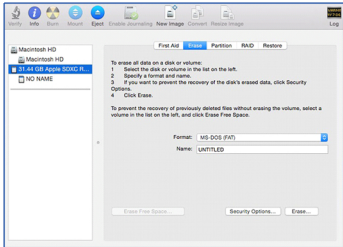


# Formatting Memory (Mac)

In **Disk Utility**, Select your camera removable drive from the list on the left. From the options on the right click the menu button labeled **Erase** (highlighted in blue below) From the dropdown menu labeled **Format**, choose **MS-DOS (FAT)**.

You can name the drive whatever you like. When ready, click the button in the lower right corner labeled **Erase**.

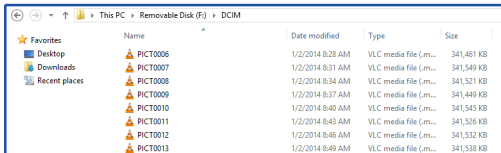
Record a video of any length to reinstall the file system on the memory card.





# Playback on PC

Videos can be reviewed and copied to a hard drive by removing the micro SD card from the camera and inserting it into a computer. It will come up as a removable drive and all the files can be accessed by opening the folder named "DCIM".



For playback we currently recommend a free program called VLC Player, found at [www.videolan.org](http://www.videolan.org)

Zetronix is NOT AFFILIATED with [www.videolan.org](http://www.videolan.org)

# Specifications

<b>Sensor</b>	<b>2 Megapixel CMOS</b>
<b>Video Resolution</b>	<b>1920x1080</b>
<b>Compression Format</b>	<b>h.264</b>
<b>Video Format</b>	<b>.MOV</b>
<b>Frame Rate</b>	<b>MAX 30 FPS</b>
<b>Camera Angle</b>	<b>90 Degrees</b>
<b>Max Memory</b>	<b>64GB</b>

# **Still Have Questions?**

**Do not return your camera**

For additional assistance contact

**Zetronix Tech Support**

**By Phone.....877-644-7592**

**By Email.....support@Zetronix.com**

**Live Chat at Zetronix.com**

**9AM-5PM EST Monday to Friday**

# 1 Year Limited Warranty

**Zetronix Corporation ("Zetronix") warrants this product against defects in material or workmanship as follows: PRODUCT: Zetronix will repair this product with new or refurbished parts, free of charge, for a period of one (1) year from the date of original purchase in the event of a defect in materials or workmanship. REPAIRS: Zetronix will repair or replace defective parts used in the repair or replacement of this product with new or refurbished parts, free of charge, for a period equal to the remainder of the original limited warranty period on the original product, or for 60 days after the date of the repair or replacement, whichever is longer. This warranty is extended only to the original purchaser. Proof of purchase in the form of a bill of sale or receipted invoice, which is evidence that the unit is within the warranty period, must be presented to obtain warranty service. To obtain warranty service, you must take this product, or deliver the product freight prepaid, in either its original packaging or packaging affording an equal degree of protection, to Zetronix Corporation. See below for additional information. This warranty only covers failures due to defects in materials and workmanship, which occur during normal use.**

## **1 Year Limited Warranty (cont.)**

**The warranty does not cover damages, which occurred in shipment, cosmetic damage, damage that is attributable to acts of God, failures which are caused by products not supplied by the warrantor, or failures which result from accident, misuse, abuse, neglect, mishandling, faulty installation, misapplication, improper installation, operation or maintenance, alteration, modification, introduction of sand, humidity or liquids, line power surge, improper voltage supply, lightning damage, or subjecting the product to operating/environmental conditions in excess of the maximum values or below the minimum values set forth in the applicable specifications, or products serviced by anyone other than Zetronix. This warranty is invalid if the factory-applied serial number has been altered or removed from the product. This warranty does not cover products sold AS IS or WITH ALL FAULTS. This warranty excludes consumable parts such as batteries and power supplies.**

# 1 Year Limited Warranty (cont.)

**Zetronix Corporation ("Zetronix") warrants this product against defects in material or workmanship as follows: PRODUCT: Zetronix will repair this product with new or refurbished parts, free of charge, for a period of one (1) year from the date of original purchase in the event of a defect in materials or workmanship. REPAIRS: Zetronix will repair or replace defective parts used in the repair or replacement of this product with new or refurbished parts, free of charge, for a period equal to the remainder of the original limited warranty period on the original product, or for 60 days after the date of the repair or replacement, whichever is longer. This warranty is extended only to the original purchaser. Proof of purchase in the form of a bill of sale or receipted invoice, which is evidence that the unit is within the warranty period, must be presented to obtain warranty service. To obtain warranty service, you must take this product, or deliver the product freight prepaid, in either its original packaging or packaging affording an equal degree of protection, to Zetronix Corporation. See below for additional information. This warranty only covers failures due to defects in materials and workmanship, which occur during normal use.**

## **1 Year Limited Warranty (cont.)**

**The warranty does not cover damages, which occurred in shipment, cosmetic damage, damage that is attributable to acts of God, failures which are caused by products not supplied by the warrantor, or failures which result from accident, misuse, abuse, neglect, mishandling, faulty installation, misapplication, improper installation, operation or maintenance, alteration, modification, introduction of sand, humidity or liquids, line power surge, improper voltage supply, lightning damage, or subjecting the product to operating/environmental conditions in excess of the maximum values or below the minimum values set forth in the applicable specifications, or products serviced by anyone other than Zetronix. This warranty is invalid if the factory-applied serial number has been altered or removed from the product. This warranty does not cover products sold AS IS or WITH ALL FAULTS. This warranty excludes consumable parts such as batteries and power supplies.**