



etronix™
State of the Art

ATOM

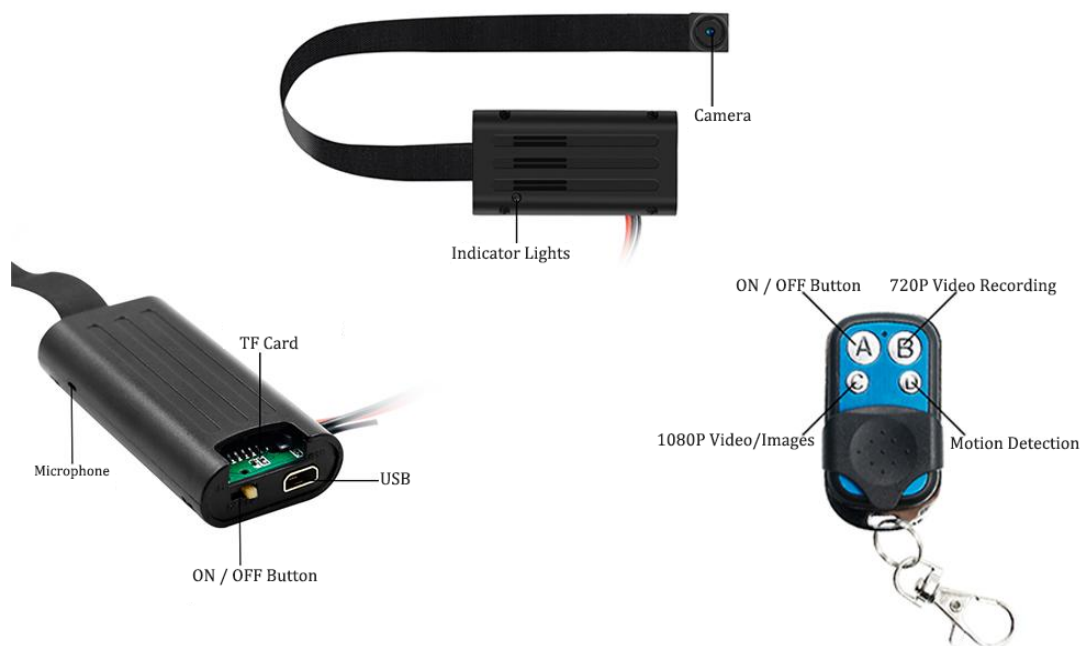


USER MANUAL

Content

- Parts introduction
- Product specifications
- About charging
- Instructions for use
- Preparation before use
- Assembly method
- Time setting
- How to format SD card
- How to operate
- Loop recording function
- Two ways to view images
- Frequently asked Questions
- Quality assurance

Product Design



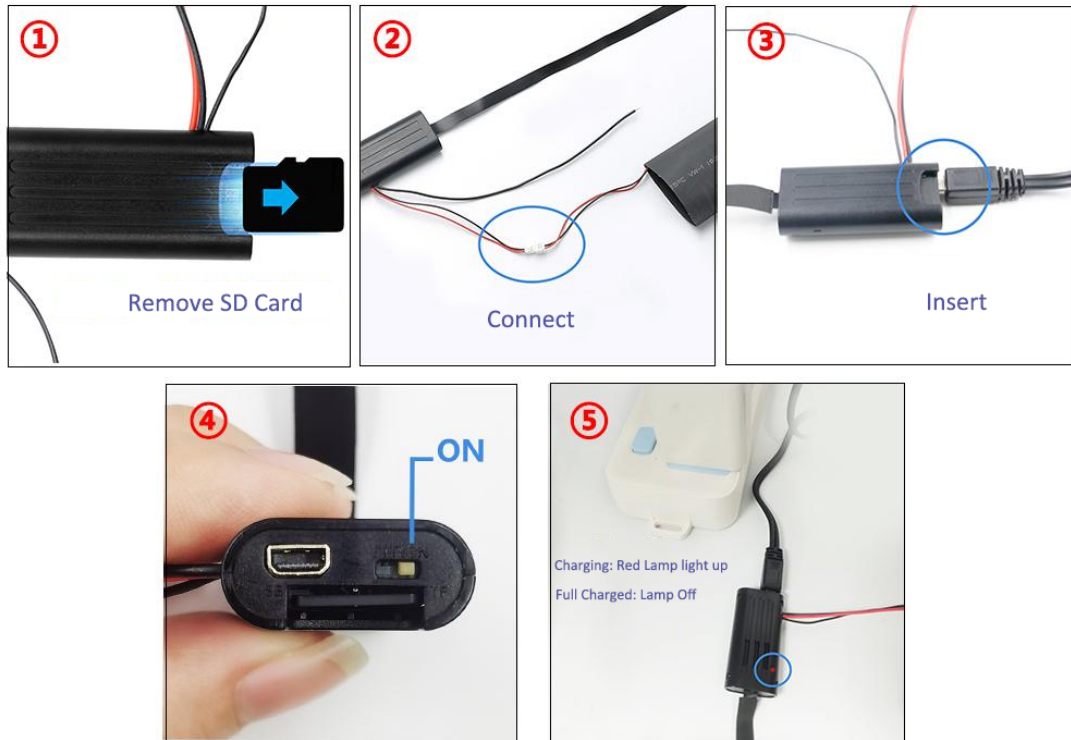
Product Specification

Video Format	MJPEG
Video Coding	AVI
Resolution	1080P
Frame Rate	30fps
Playback Software	Windows Media Player
Image Format	JPG
Image Ratio	4 : 3
Battery	2200mAh
Charging Voltage	DC-5V
USB Port	Mini 5Pin USB
Storage Support	micro SD 128GB MAX

Charging

*When charging, the camera body must be connected to the included battery.

Charging Time : About 8 hours



Charging operation

- ① Before charging, first remove the micro SD card
- ② Connect the camera body to the battery
- ③ Insert the included USB cable into the USB port of the camera body
- ④ Turn on the camera body
- ⑤ The red light will turn on while charging, the light will turn off when fully charged

Tip

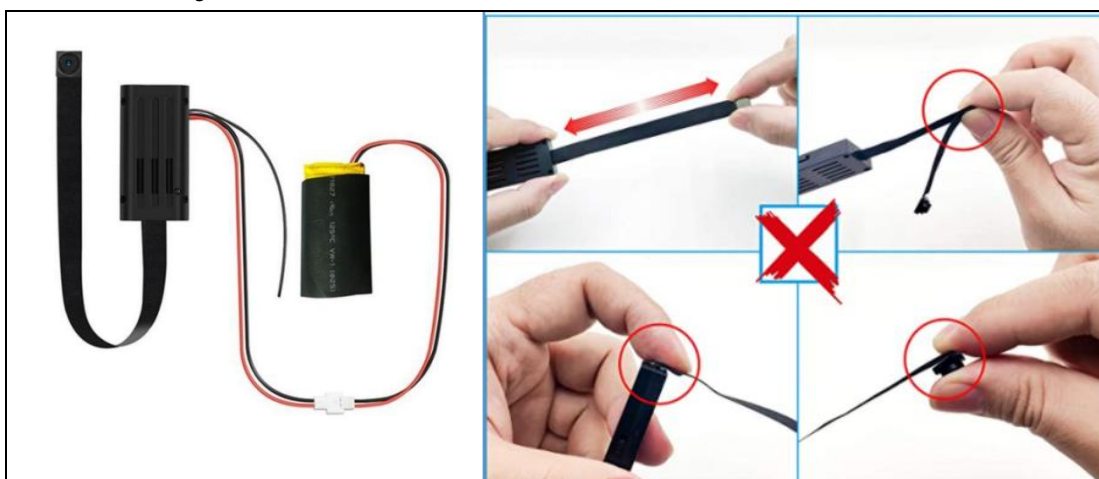
- ① The camera cannot be charged unless it is connected to a battery.
- ② The camera body cannot be charged with the switch turned off.
- ③ Please charge with a 5V-1A/2A charger, not with the USB port of a computer or other device. (For example, mobile phone charger.)
- ④ If you charge with the SD card inserted, the light will remain off when charging.
- ⑤ If you are not using the camera, please turn off the switch of the body. Also, the camera body and battery will not be linked.

Operation Instructions

- ① Prepare various parts of the small camera
- ② This camera cannot record without inserting a micro SD card
- ③ Prepare one micro SD card (capacity: up to 8-128GB)
- ④ Please format the SD card on your computer before inserting it.



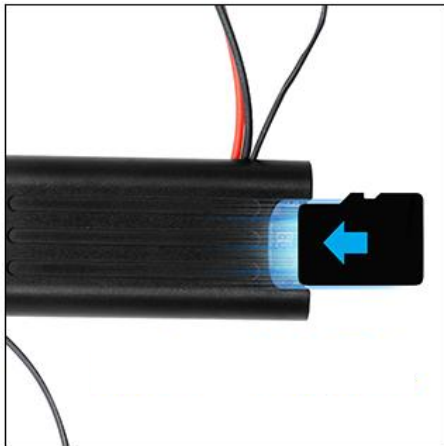
➤ Assembly Method



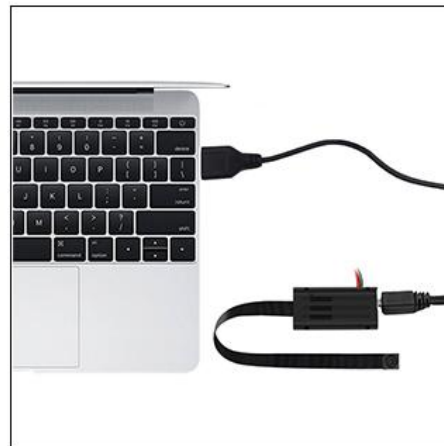
Tip

The cable connecting the lens to the camera body is fragile and may break if pulled too hard. Also, bending the cable may cause a poor connection, which may affect the camera's shooting function, so please be careful when using the product.

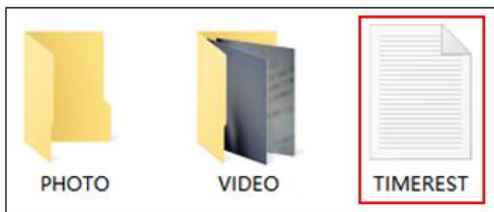
➤ Time Setting



①



②



③



④

Time setting operation

- ① Insert the micro SD card
- ② Connect the camera to the computer with a USB cable
- ③ Open "Removable Disk" and create a txt file named "TIMERSET".
- ④ Write precise time information in txt file using half-width alphanumeric characters
(For example: March 11, 2022 12:00:00 2022-03-1112:00:00Y)

Recording

If time watermark appears: write Y

If the time watermark does not appear, change Y to N

For example :

2022-03-11 12:00:00 Y (There is a time mark)

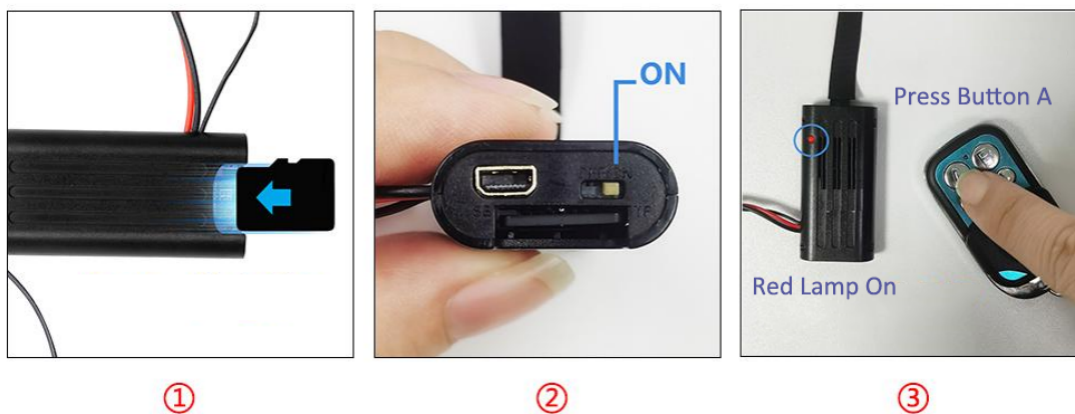
2022-03-11 12:00:00 N (No time mark)

➤ How to format SD card

- ① Press and hold the D button for 5 seconds to format the SD card.
- ② Put the SD card into a card reader and format it on your computer.

➤ How to operate

1. ON



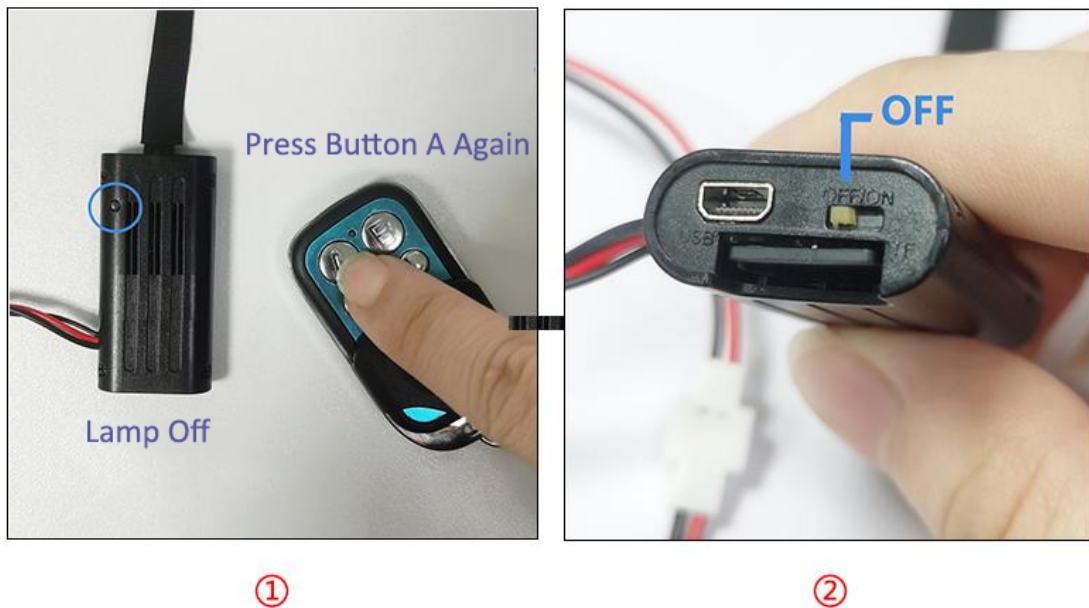
ON

- ① Insert the microSD card
- ② Turn on the camera
- ③ Press the A button on the included remote control until the red light comes on and the camera goes into standby mode

Tip

If no card is inserted: Press button A, the red light will flash 5 times and the device will shut down.

2. OFF



OFF

- ① Press the A button in standby mode, the red light goes out, and the device shuts down.
- ② Switch off the camera body

Tip

When in standby mode, if there is no operation for 1 minute, the device will automatically shut down.

3. HD 720P Recording



operation

- ① In standby mode, press the B button, the red light will flash twice
- ② The red light will turn off, recording will start, and the recording will be saved every 5 minutes

Recording stop operation

- ③ Press the B button again, the red light will turn on, the recording will be saved, and the camera will return to standby mode.

4. Taking photos



①

②

operation

- ① Press the C button in standby mode
- ② The red light flashed once and a photo was taken.

Tip

There is no image stabilization, so make sure you hold the camera steady before taking a photo.

5. Video Recording



①



②



③

Operation

- ① In standby mode, press and hold the C button for 3 seconds until the red light flashes twice.
- ② The red light goes out, 1080P recording begins, and the recording is saved every 5 minutes.

Recording stop operation

- ③ Press the C button again, the red light will come on, the recording will be saved, and the camera will return to standby mode.

6. Motion detection recording



①



②



③

Operation

- ① When you press the D button in standby mode, the red light flashes three times.
- ② The red light goes out and the camera goes into motion detection mode (when motion is detected, recording starts automatically).

Recording stop operation

- ③ Press the D button again, the red light will come on, the recording will be saved, and the camera will return to standby mode.

NOTE : You can format the SD card by pressing and holding the D button for 5 seconds.

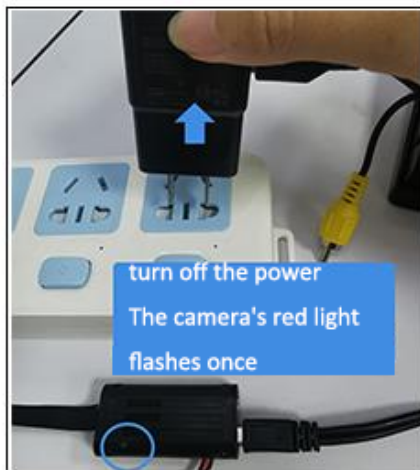
7. Record while charging



①



②



③

Operation

- ① Turn on the camera and connect it to a USB 5V-1A charger (such as a mobile phone charger).
- ② When the red light turns on, flashes twice, then goes off, 720p recording will start and the recording will be saved every 5 minutes.

Recording stop operation

- ③ The power is turned off, the red light flashes once, and the recording is saved.

Loop recording function

Automatic loop recording :

After the memory card is full, the recording will automatically loop and overwrite the old recording files.

Note :

There is no setting to turn off the automatic recording loop mode, so please make sure to back up old recording files if necessary.

Two ways to watch the video

Operation :

- ➊ Remove the SD card from the device, put it in a card reader, and insert it into your computer to watch the video.
- ➋ Connect the camera to your computer with the included USB cable and watch the video on your computer.

Note: The card may not be recognized due to compatibility issues between this unit and your PC system.