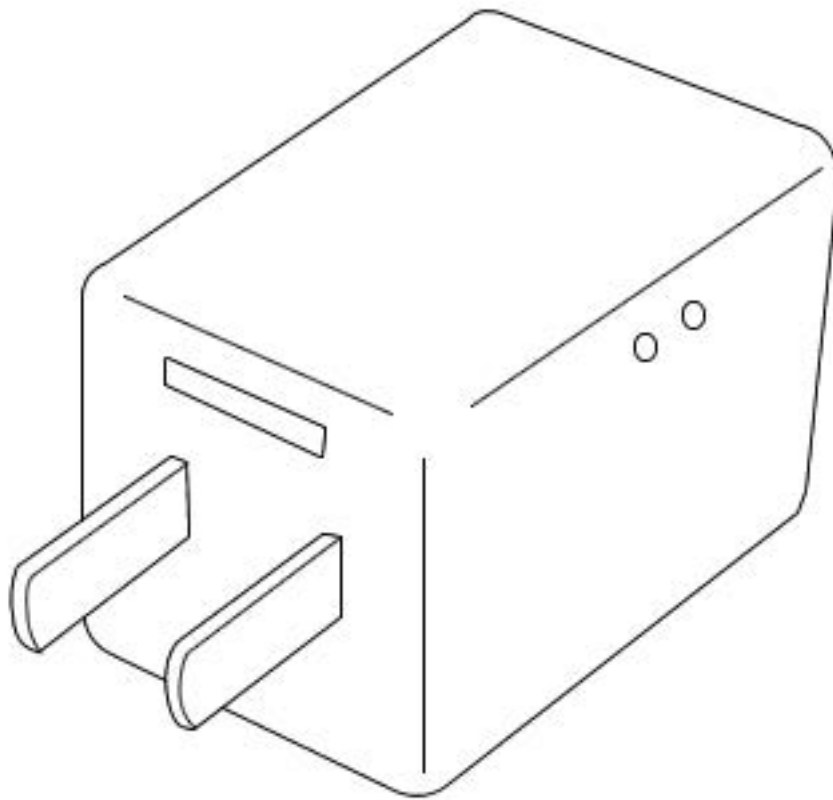




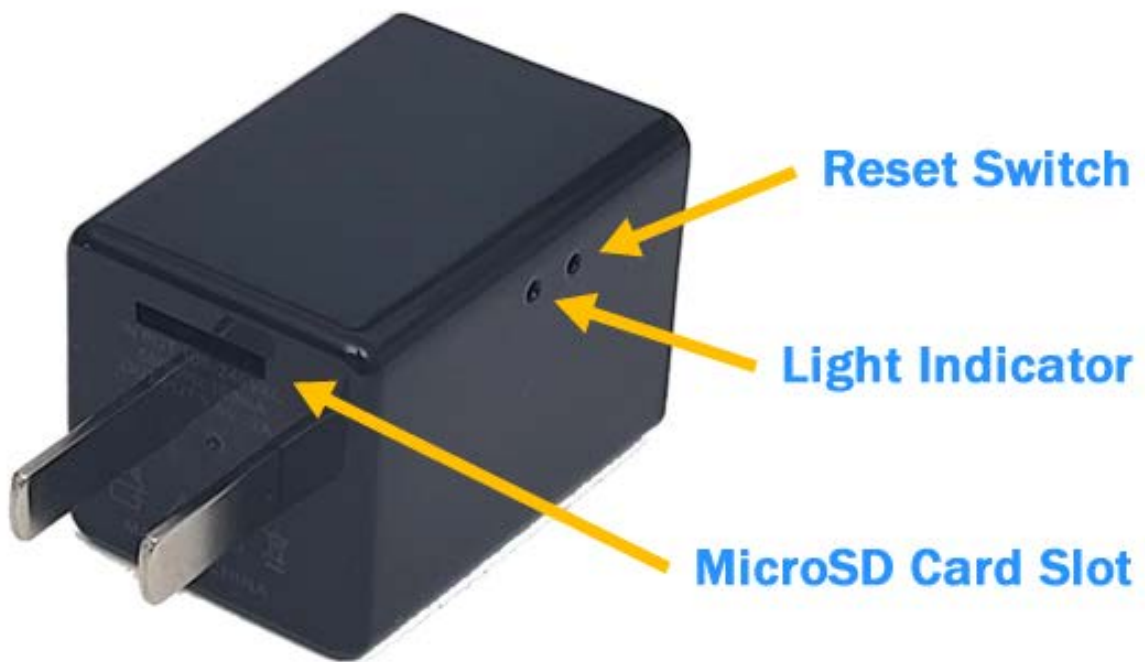
# KOIOS

## AC-USB Adaptor Camera



**(zACDVR-WiFi)**

USER MANUAL



## I. Startup

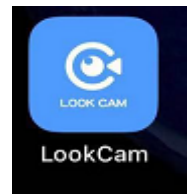
For local recording, install a **MicroSD card** on the device.

Power it up by simply plugging it into an electrical outlet.

A red blinking light will come up then go off indicating the wifi is on and ready to connect.

## II. Download App

Search for App called **LOOKCAM** on the App Store or Google Play, download it and install it.

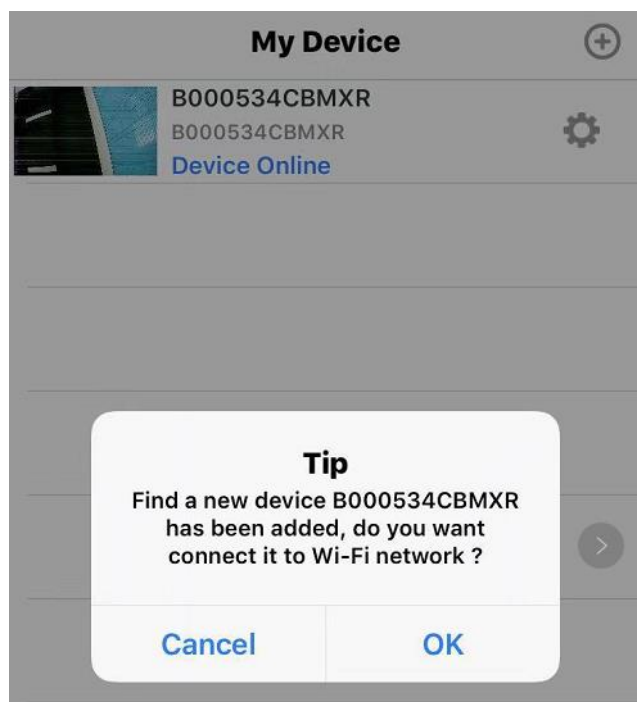


## III. Hotspot connection of mobile phone to camera

Enter the mobile phone WI-FI settings, find the WiFi account (UID number) and connect. As shown in the figure

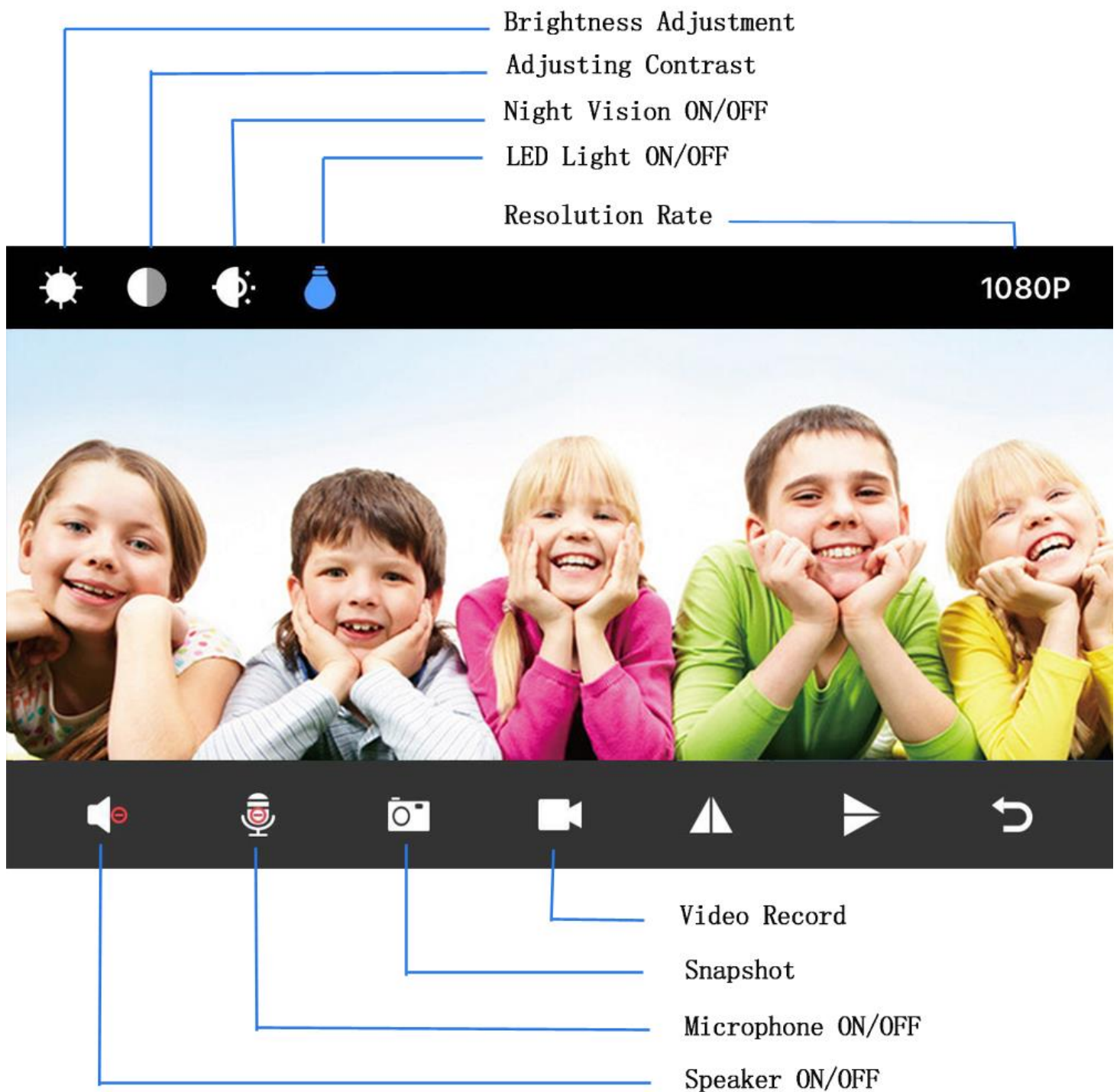


After the UID of the device is connected, open the phone APP (LOOKCAM). (As shown below)



It most likely will automatically detect the camera device and prompt you to connect to it. Tap "OK".

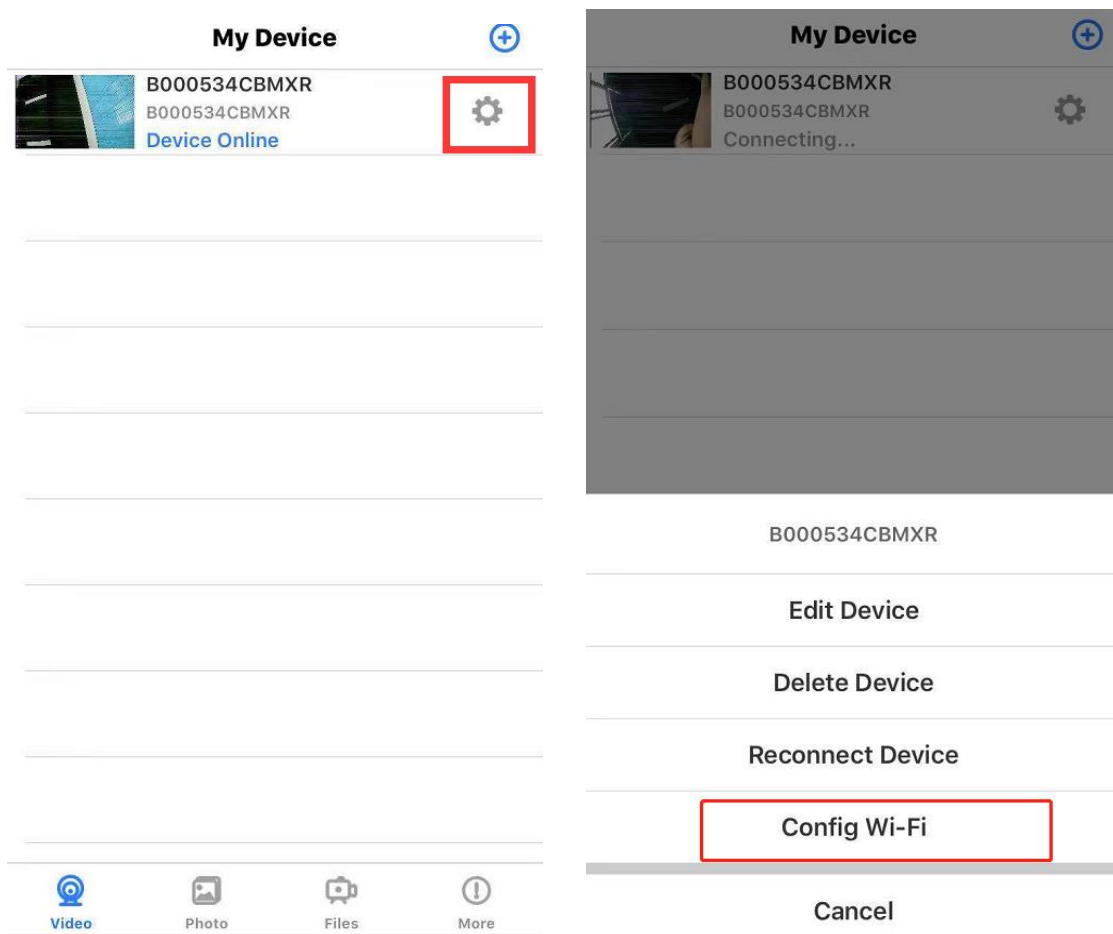
You should now be able to preview video in your phone.  
By tapping on Device Online, you will see live video stream.



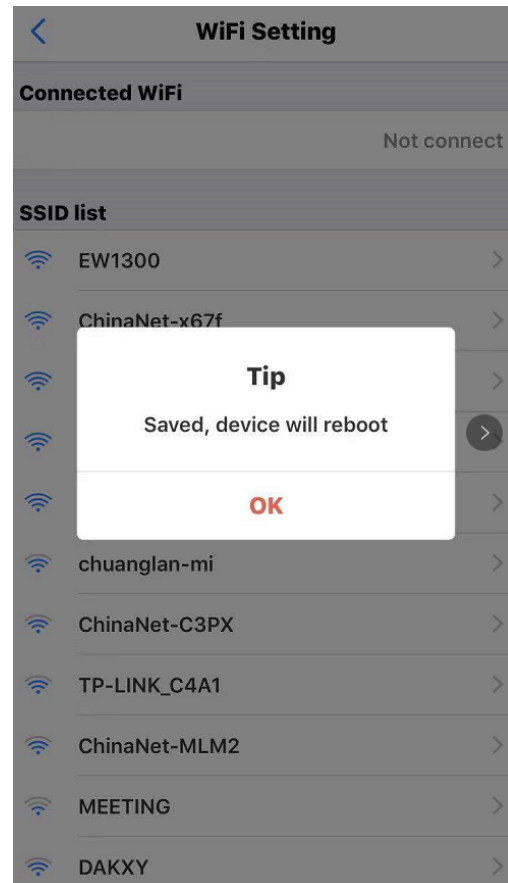
## IV. Set up remote stream

So far you can only preview video if you are connected to the same local network. To access remotely, the camera needs to access your local network to connect to the internet and broadcast the video.

Click the setup icon → Advanced Configuration → WiFi Connection Configuration → Find WiFi → Enter Password → Click OK and the camera will restart automatically. (Wait for the camera to restart (about 40 seconds). The camera will change from offline to online, at which time the viewable video can be accessed remotely.)



Select your local WiFi network, and provide the password.



## V. Quick Troubleshooter

---

- The camera supports up to 128 GB Micro SD card. Please use High Speed Class 10 FAT formatted memory card.
- You may have to format the Micro SD before using.
- Most issues can be fixed by resetting the device. Using a pin, press and hold the **reset switch** for 15, wait a few minutes for the WiFi to reboot.
- The default password, if needed, is **123456**
- This device does not work with a 5GHz network, please ensure your router has a 2.5GHz capability and that you are connecting to its 2.5GHz channel. Most routers transmit on both channels.



## Product Specifications

Resolution Ratio	1080P/720P/640P/320P
Video Format	AVI
Frame Number	25
Visual Angle	150 /90 degree
Motion Detection Camera Shooting	Straight line 6 meters
Minimal Illumination	1LUX
Video Duration	Over 1 Hours
Compressed Format	H.264
Recording Range	5m <sup>2</sup>
Consumption	380MA/3.7V
Storage Temperature	-20-80 degree centigrade
Operating Temperature	-10-60 degree centigrade
Operation Humidity	15-85%RH
Memory Card Type	TF card
Player Software	VLCPlayer/SMPlayer
Computer Operating System	Windows/Mac OS X
Operating System	Android/iOS