



ZWATCH-1080IR

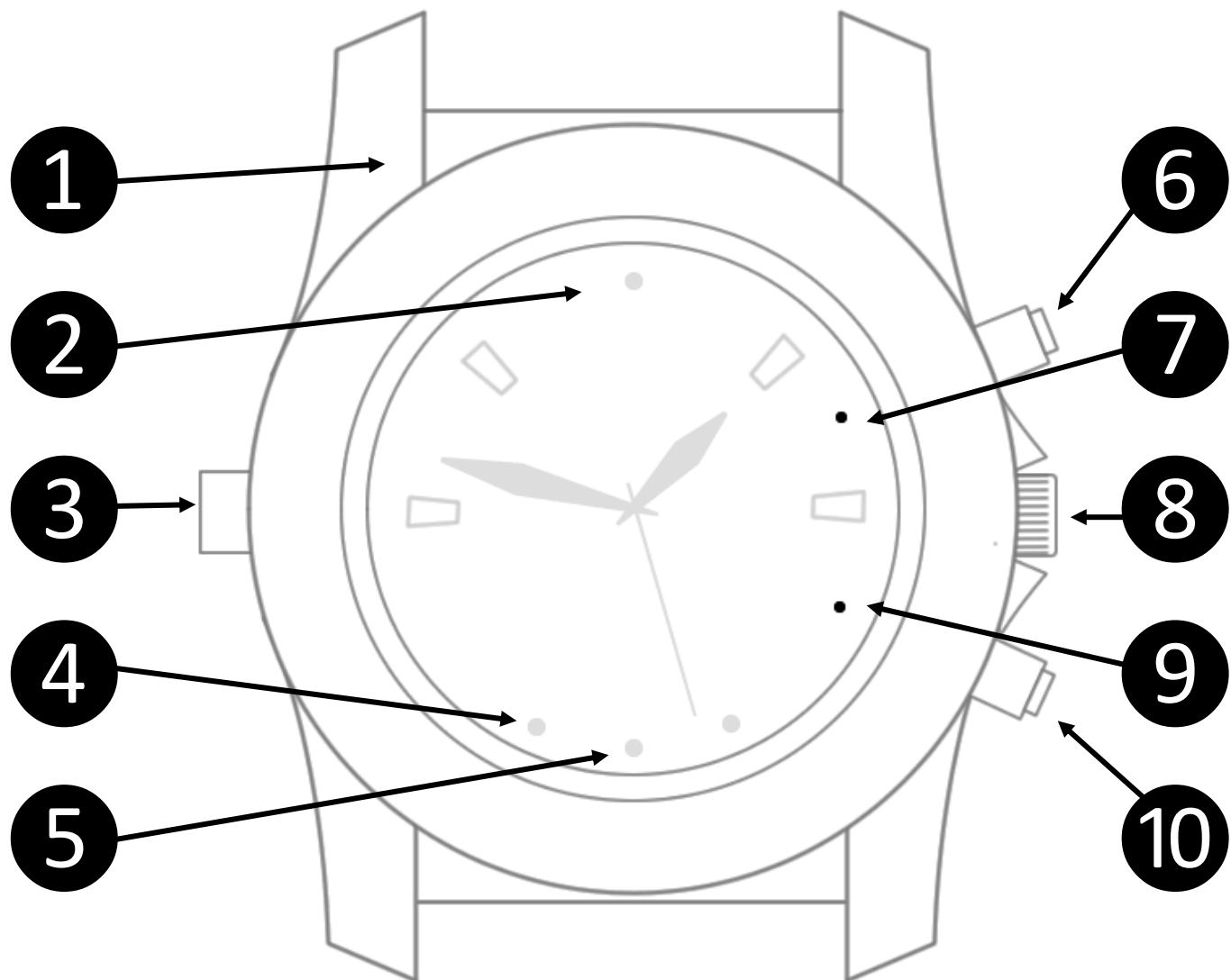
CAMERA WATCH

USER MANUAL

REV.2

| | |
|------------------------------------|----------------|
| 1. Diagram | Page 3 |
| 2. Function/Mode Lights Indication | Page 4 |
| 3. Charging the Kronos Watch | Page 4 |
| 4. Adjusting the time on the watch | Page 5 |
| 5. Recording Video & Audio | Page 5 |
| 6. Recording Audio Only | Page 6 |
| 7. Taking Pictures | Page 7 |
| 8. Recording by Motion Detection | Page 8 |
| 9. Shutting off the Watch's Camera | Page 9 |
| 10. Accessing the Recorded Media | Page 9 |
| 11. Video Date/time Stamp Setup | Page 10 |
| 12. Maintenance | Page 11 |
| 13. Troubleshooting | Page 12 |
| 14. Device Specifications | Page 15 |
| 15. Zetronix Warranty | Page 16 |

1. DIAGRAM



① Hidden Mic

② Motion sensor

③ USB/PC Interface

④ Infra-red LEDs

⑤ HD Camera

⑥ Function switch

⑦ Top Indicator light (red/green)

⑧ Time adjustment knob

⑨ Bottom Indicator light (blue)

⑩ Mode Switch

2. FUNCTION/MODE LIGHTS INDICATION

| | |
|-------------------------------------------|------------------------------|
| Solid BLUE light | Video recording standby mode |
| Solid GREEN light | Sound recording standby mode |
| Solid BLUE and GREEN lights | Picture camera standby mode |
| Solid RED light | Battery charging mode |
| Flashing BLUE light | Memory full |
| Flashing GREEN light | Low battery |

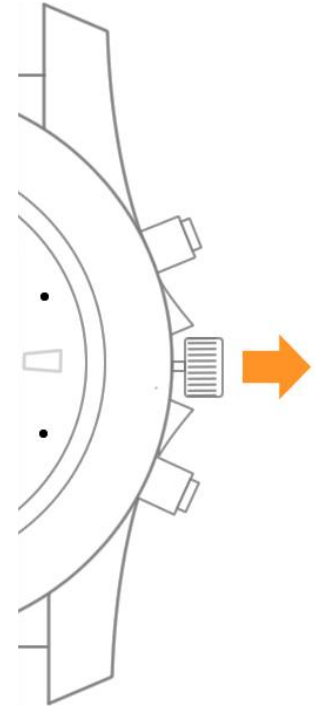
3. CHARGING THE KRONOS WATCH

1. Unscrew the button **3** to access the hidden USB port
2. Connect the included USB cable to the USB port **3** and to a universal AC wall charger or any computer's USB port.
3. A red light will come on to indicate that it is charging.

The top red light **7** will go off once the watch is fully charged.

4. ADJUSTING THE TIME ON THE WATCH

1. Using your fingernail or a knife, pull the time adjustment knob ⑧ outwards.
2. Turn the knob ⑧ to turn the dial to the correct time.
3. To resume the watch operation, push the knob back in



5. RECORDING VIDEO WITH AUDIO

1. Press and hold the Function switch ⑥ for 2 seconds to turn on the device. The bottom blue light ⑨ will come on indicating video recording standby mode.
2. Quickly press the function ⑥ switch to start the recording. The blue light will blink 3 times and go out to indicating video is recording.
3. Pressing the function switch ⑥ again, will pause the recording placing the device back on video recording standby more, indicated by a solid blue light ⑨.

6. RECORDING AUDIO ONLY

1. Press and hold the Function switch ⑥ for 2 seconds to turn on the device. The bottom blue light ⑨ will come on indicating video recording standby mode.
2. Press the Mode switch ⑩ to switch the watch to audio recording standby mode indicated by a green light ⑦.
3. Quickly press the function switch ⑥ to start the recording. The green light ⑦ will blink 3 times and go out to indicating audio is recording.
4. Pressing the function switch ⑥ again, will pause the recording placing the device back on audio recording standby more, indicated by a solid green light ⑦.

7. TAKING PICTURES

1. Press and hold the Function switch ⑥ for 2 seconds to turn on the device. The blue light ⑨ will come on indicating video recording standby mode.
2. Press the Mode switch ⑩ **twice** to switch the watch to picture taking mode indicated by both the green ⑦ and blue lights ⑨.
3. Quickly press the function switch ⑥ to snap a picture. Both the green ⑦ and blue lights ⑨ will flash off to on indicating the picture was taken.

8. RECORDING BY MOTION DETECTION

1. Press and hold the Function switch **6** for 2 seconds to turn on the device. The bottom blue light **9** will come on indicating video recording standby mode.
2. Press and hold the Mode switch **10** for 3 seconds, both the green **7** and blue light **9** will flash 3 times and go out, indicating the camera is on motion activation mode.

The watch will records video & audio for 60 seconds once motion is detected.

To remove the camera from motion activation mode, press and hold the function switch **6** for 2 seconds, the blue light will come on bringing the camera back to video recording standby mode.

9. SHUTTING OFF THE WATCH'S CAMERA

To shut off the camera device, first ensure the watch is on any of the standby modes. Press and hold the Function switch ⑥ for 3 seconds. The Green light will flash 3 times and go out shutting off the device.

10. ACCESSING THE RECORDED MEDIA

1. Unscrew the button ③ to access the hidden USB port
2. Connect the included USB cable to the USB port ③ and to your computer's USB port.
3. The red ⑦ and blue ⑨ light will come on indicating a connection.
4. Within 30 seconds your computer should prompt you with options for viewing the files. If it doesn't, please browse the files from "This PC", "My Computer", or "File Explorer" if using a windows system, or look for a new drive in your desktop if using Mac OS.

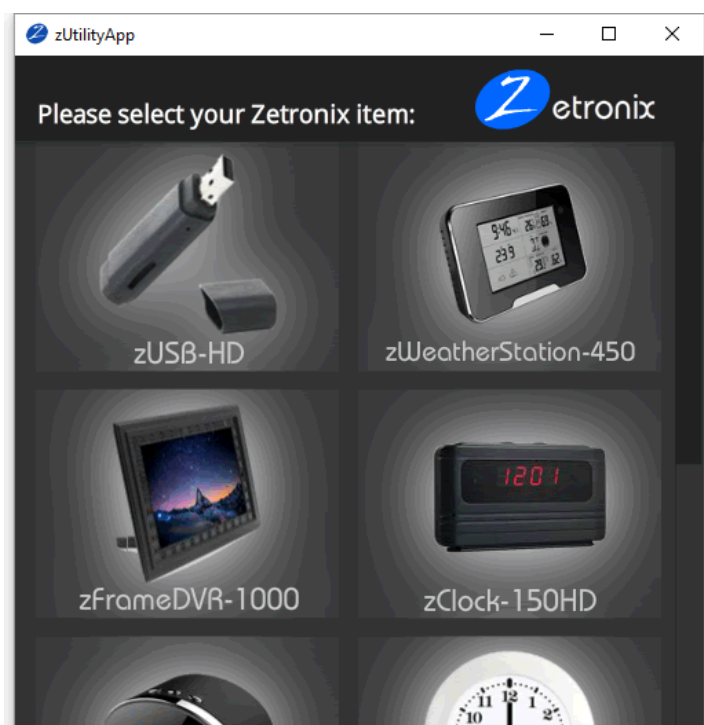
If this is the first time connecting the watch to the computer, your computer will first automatically install the required drivers.

11. VIDEO DATE/TIME STAMP

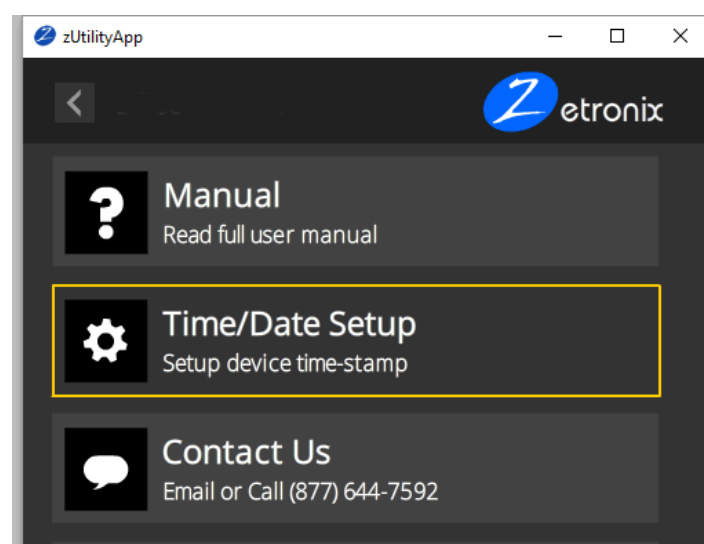
1.To update or remove the video date/time stamp watermark on the video recording, please download the zUtility App from the Zetronix website.

<https://www.zetronix.com/download>

2.After downloading and installing the App, you will be prompted to choose the device. From here choose the zWatch-1080IR.



3.Next choose Time/date Setup and follow the on-screen instructions.



12. MAINTNANCE

Battery:

If the watch is not in use for a long time, please have it fully charged before using. For safety, do not put this watch too close to a fireplace or overheated areas.

Operating temperature:

0—40°C. For the extension of battery life, it is better to use it in room temperature.

Operating humidity:

20% -80%. This product does not have water resistance function (only waterproof when MIC2 is used). So it cannot work in the very humid environment or under water.

Lens:

Do not expose the camera lens directly to strong light such as sun light so as to avoid damage to the optical sensors.

Cleaning:

Always use dry cloth to clean up the glass before doing recording. The watch has a transparent cover on the glass for protection; please remove it before using the camera.

13. TROUBLESHOOTING

Most issues can be solved by resetting the watch or formatting the memory.

Resetting the watch:

Press and hold both switches **6** and **10** simultaneously for 2 seconds. The lights will go out shutting down and resetting the camera watch functions.

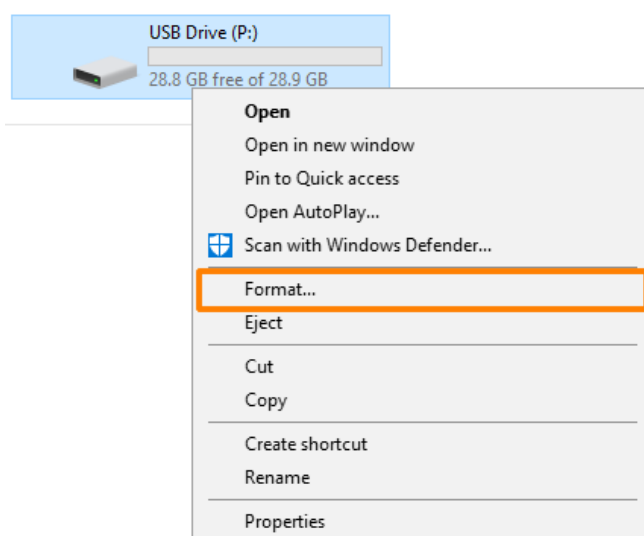
Formatting the memory:

WARNING: Formatting the memory will wipe out all the recorded media stored in the watch.

Formatting the memory will clean up any file corruption that may exist preventing the device from operating correctly.

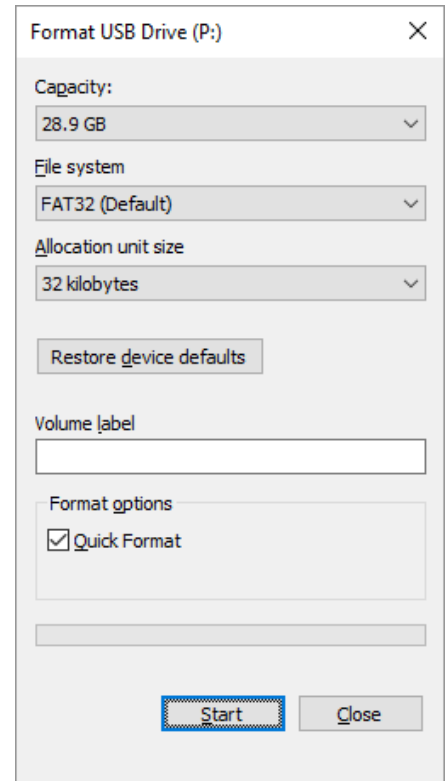
Formatting on a PC:

1. Connect the watch to your PC as instructed in section 9 of this manual.
2. Locate your hard drive directory. It will be under "My Computer" or "This PC". You can also open a new File Explorer window and your drives will be listed there. The watch will appear as a "Removable Drive" or "USB Drive".



3. **Right** Click on the removable drive and select Format
4. From the options shown, make sure that you have selected FAT32 or as your file system. Leave other settings at their defaults.
5. Click Start. After a few seconds the memory will be formatted.

WARNING: Do not format in **exFAT** or **NTFS**, if you have a memory larger than 32GB please contact support.

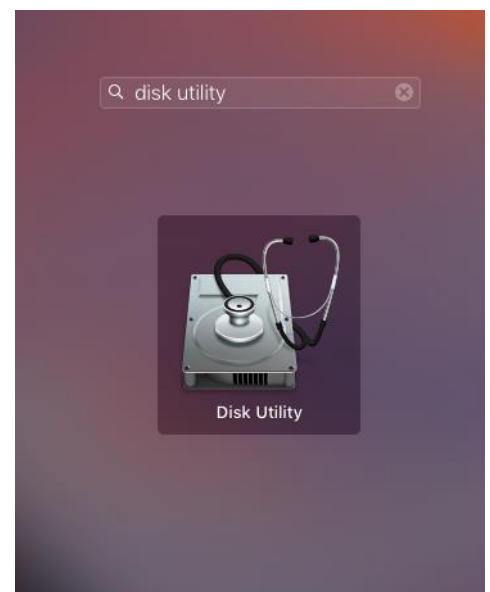


Formatting on a Mac

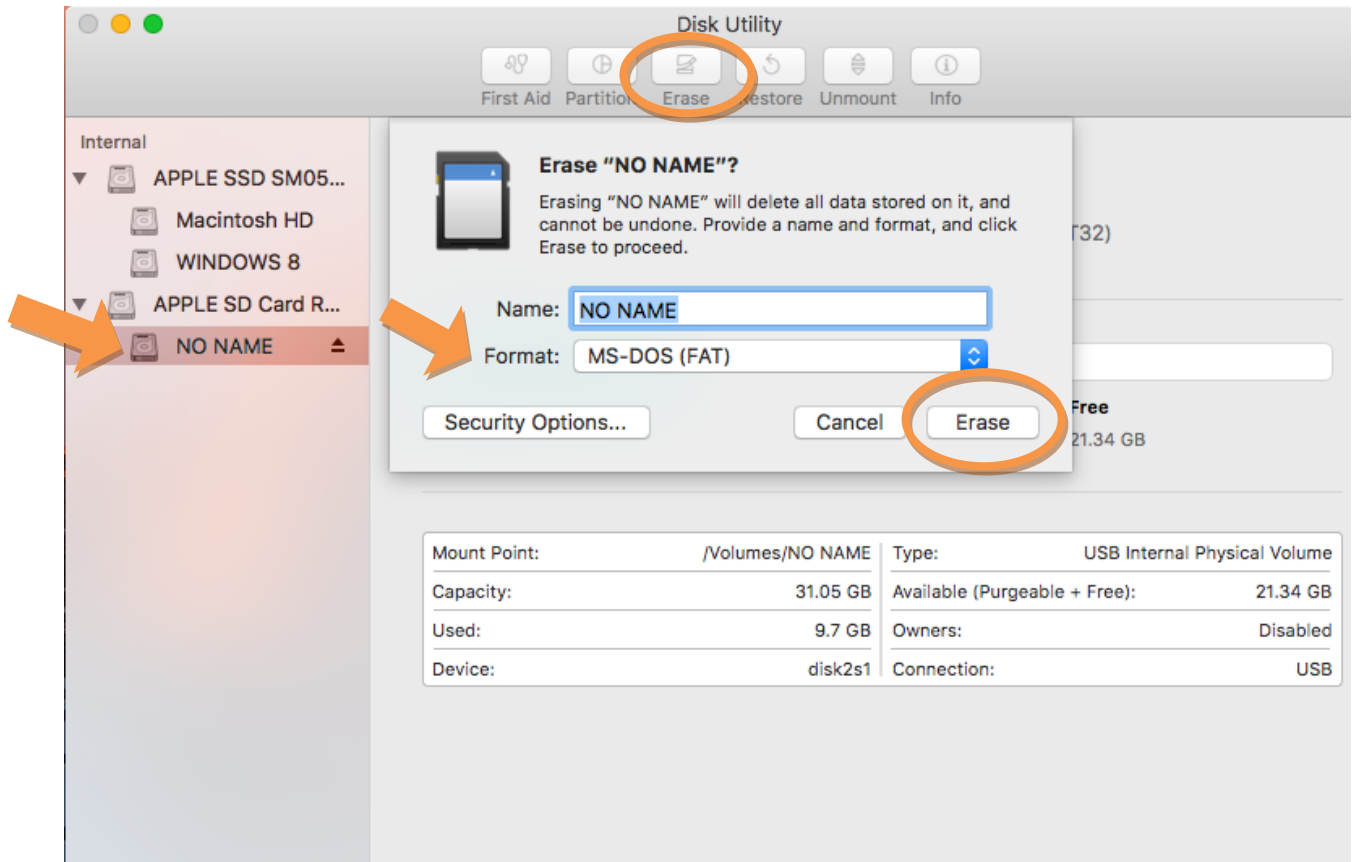
Connect the watch to your PC as instructed in section 9 of this manual.

1. Locate and open a program called "Disk Utility". It is usually found by going into the application folder and opening the utility folder.

App Locations -> Utilities



2. In Disk Utility, Select your watch removable drive from the list on the left. Most likely named "NO NAME".



3. Along the top of the window menu, click on the button labeled **Erase** (highlighted in the circle above)
4. From the dropdown menu labeled Format, choose **MS-DOS (FAT)**.
5. When ready, click the button in the lower right corner labeled **Erase**.

After a few seconds the memory will be formatted.

14. DEVICE SPECIFICATIONS

| Item | Parameter |
|-------------------|--------------------------------------------------|
| Photo format | JPG |
| Audio format | WAV |
| Video resolution | 1920×1080 |
| Photo resolution | 4032×2912 (12MP) |
| Frame rate | About 30 frames per second |
| Mini illumination | 10 Lux (infrared light on opening night vision) |
| IR Switch | Automatic |
| USB type | Mini 8 Pin / USB 2.0 |
| OS Support | Windows me/2000/Vista/XP/7/10; Mac OS10.4; Linux |

15. ZETRONIX WARRANTY

Zetronix Corporation ("Zetronix") warrants this product against defects in material or workmanship as follows: **PRODUCT:** Zetronix will repair this product with new or refurbished parts, free of charge, for a period of one (1) year from the date of original purchase in the event of a defect in materials or workmanship. **REPAIRS:** Zetronix will repair or replace defective parts used in the repair or replacement of this product with new or refurbished parts, free of charge, for a period equal to the remainder of the original limited warranty period on the original product, or for 60 days after the date of the repair or replacement, whichever is longer. This warranty is extended only to the original purchaser. Proof of purchase in the form of a bill of sale or receipted invoice, which is evidence that the unit is within the warranty period, must be presented to obtain warranty service. To obtain warranty service, you must take this product, or deliver the product freight prepaid, in either its original packaging or packaging affording an equal degree of protection, to Zetronix Corporation. See below for additional information. This warranty only covers failures due to defects in materials and workmanship, which occur during normal use.

The warranty does not cover damages, which occurred in shipment, cosmetic damage, damage that is attributable to acts of God, failures which are caused by products not supplied by the warrantor, or failures which result from accident, misuse, abuse, neglect, mishandling, faulty installation, misapplication, improper installation, operation or maintenance, alteration, modification, introduction of sand, humidity or liquids, line power surge, improper voltage supply, lightning damage, or subjecting the product to operating/environmental conditions in excess of the maximum values or below the minimum values set forth in the applicable specifications, or products serviced by anyone other than Zetronix. This warranty is invalid if the factory-applied serial number has been altered or removed from the product. This warranty does not cover products sold AS IS or WITH ALL FAULTS. This warranty excludes consumable parts such as batteries and

power supplies. Zetronix Corporation ("Zetronix") warrants this product against defects in material or workmanship as follows: PRODUCT: Zetronix will repair this product with new or refurbished parts, free of charge, for a period of one (1) year from the date of original purchase in the event of a defect in materials or workmanship. REPAIRS: Zetronix will repair or replace defective parts used in the repair or replacement of this product with new or refurbished parts, free of charge, for a period equal to the remainder of the original limited warranty period on the original product, or for 60 days after the date of the repair or replacement, whichever is longer. This warranty is extended only to the original purchaser. Proof of purchase in the form of a bill of sale or receipted invoice, which is evidence that the unit is within the warranty period, must be presented to obtain warranty service. To obtain warranty service, you must take this product, or deliver the product freight prepaid, in either its original packaging or packaging affording an equal degree of protection, to Zetronix Corporation. See below for additional information. This warranty only covers failures due to defects in materials and workmanship, which occur during normal use.

The warranty does not cover damages, which occurred in shipment, cosmetic damage, damage that is attributable to acts of God, failures which are caused by products not supplied by the warrantor, or failures which result from accident, misuse, abuse, neglect, mishandling, faulty installation, misapplication, improper installation, operation or maintenance, alteration, modification, introduction of sand, humidity or liquids, line power surge, improper voltage supply, lightning damage, or subjecting the product to operating/environmental conditions in excess of the maximum values or below the minimum values set forth in the applicable specifications, or products serviced by anyone other than Zetronix. This warranty is invalid if the factory-applied serial number has been altered or removed from the product. This warranty does not cover products sold AS IS or WITH ALL FAULTS. This warranty excludes consumable parts such as batteries and power supplies.

■ Contact Us

Still Have Questions?

Do NOT return your camera!

We can help!

Contact Zetronix Tech Support

By Phone **(877) 644-7592**

By Email **support@zetronix.com**

On the Web **<http://help.zetronix.com>**

<http://help.zetronix.com>

©2018 Zetronix Corp.