

FUMA-3HW

**FUMA 3 - HD WIFI Nanny Camera Hardwired
Dummy Smoke Detector with IR Night Vision**



Product Diagram



3 WAYS TO USE:

Way 1. Powered by the included backup rechargeable battery, work about 4hrs after full charged.

Way 2. Use the included AC charging adapter and charging cable to supply power.

Way 3. Powered by 100 - 220V AC ~ 50/60 Hz wire-in connector.

WIRES ON DEVICE HARNESS CONNECTED TO

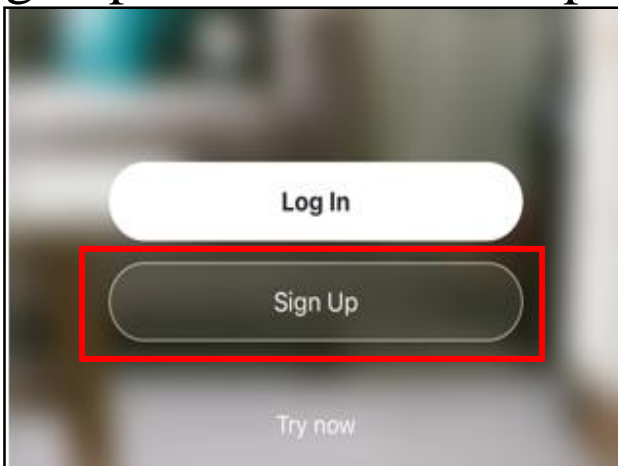
Black Hot Side of AC Line
White Neutral Side of AC Line

1. Download and sign up the app

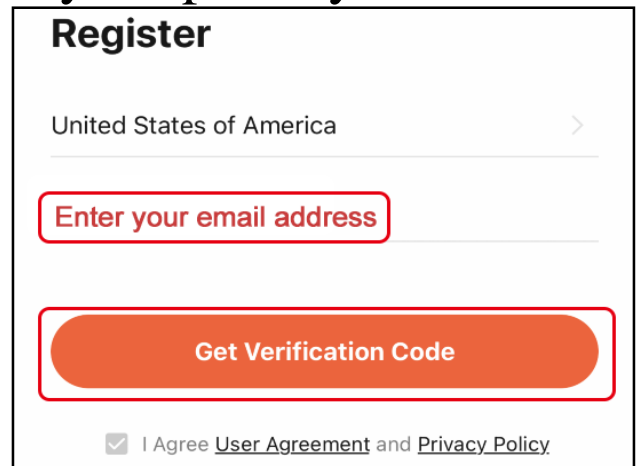
Search and download **TuyaSmart** on the App Store or Google Play.



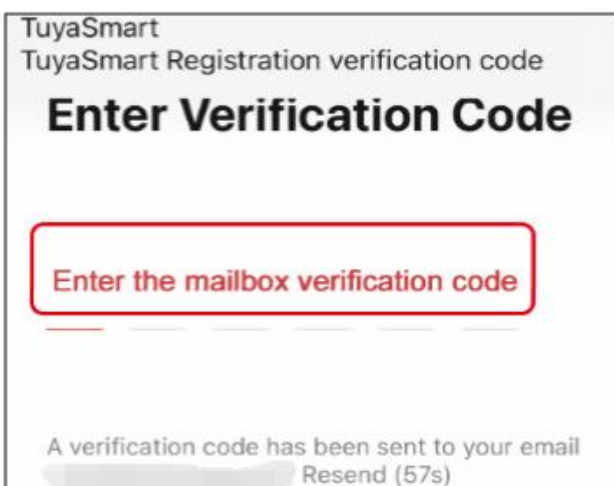
After downloading the **TuyaSmart** app, you will need to sign up for an account to protect your privacy.



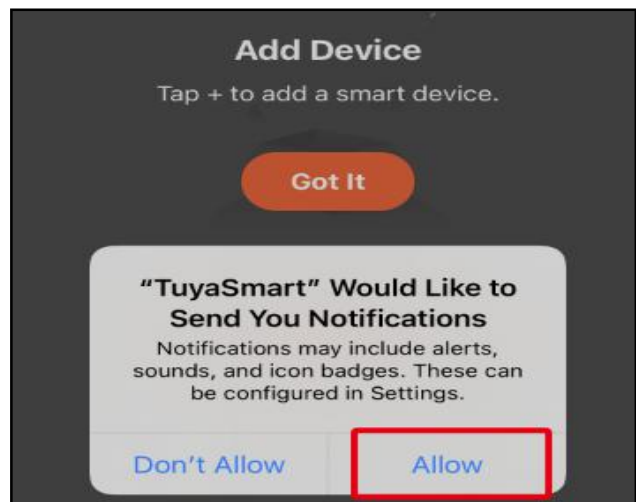
1. Sign up



2. Enter your e-mail address



3. Enter the code sent to you



4. Allow all the request

2. Setup instructions

STEP 1. Charge the camera

Due to prolonged transportation time during shipping, the battery power might be low, charge the camera for 4-6 hours before first using. (It is recommended you to plug it into an outlet or connect to AC power for 24/7 operation.)

Note: Camera will operate approximately 4 hours after full charged if not plugged.

STEP 2. Insert a Micro SD card

Insert a Micro SD card if you want to save the videos, camera supports up to 64GB (cards are not included in the package).

STEP 3. Turn on the camera

Switch the ON/OFF switch to the ON position, you will see the red light is steady on, wait for 20 seconds, the blue light will flash and you will hear a voice prompt of "**Ready to Pair**".

STEP 4. Reset the device (**Very Important**)

If you do not hear the voice prompt of "**Ready to Pair**" after you turn on the camera, please use a pin to hold the Reset button for 7-8 seconds, you will hear a voice prompt of "**Reset Successfully**", then release the reset button. The BLUE light goes off and on again, which means reset has completed.

Note: Please wait till the blue light flashes slowly and you hear a voice prompt of "**Ready to pair**", then you can go

to configure the camera.

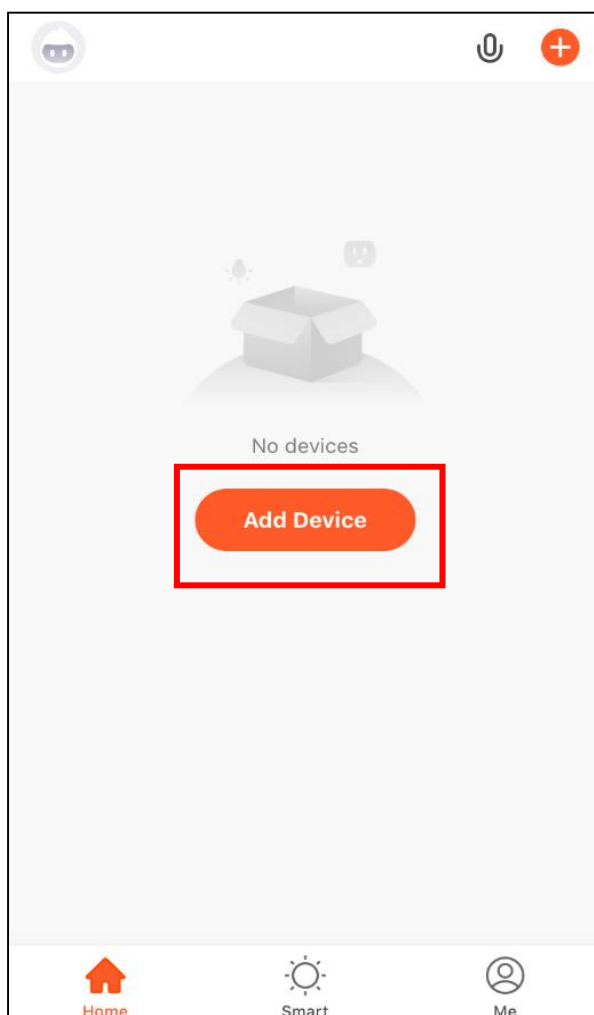


STEP 5. Set WiFi connections

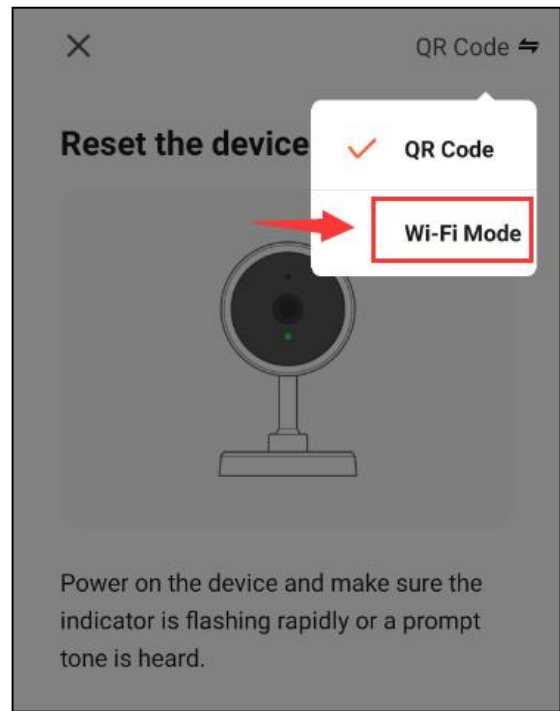
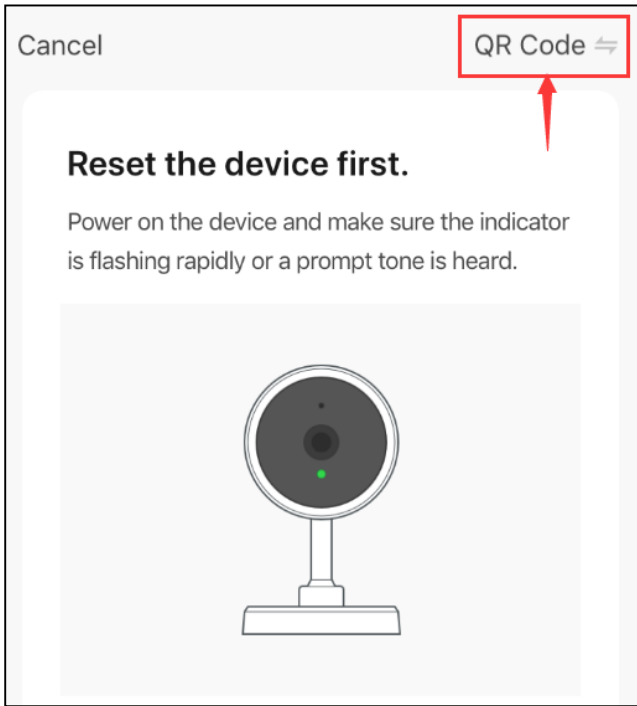
After you register your account, please follow the instructions bellow to complete the steps carefully in turn. Two ways to setup, either one is ok.

Way 1. AP Mode connection (Recommend)

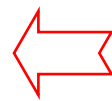
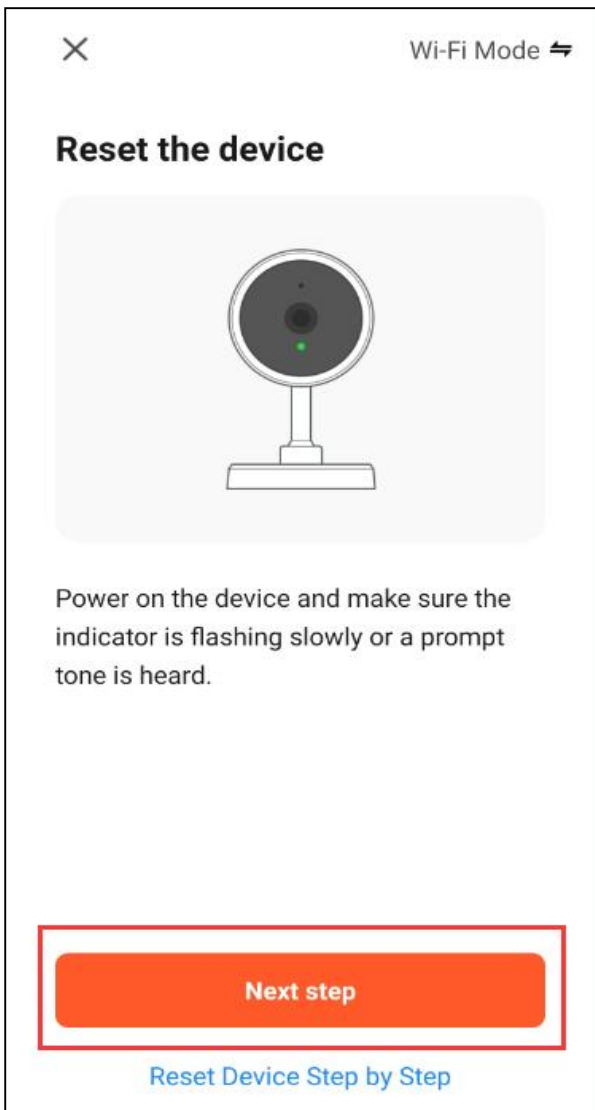
1) Add the device



2) Select Wi-Fi Mode

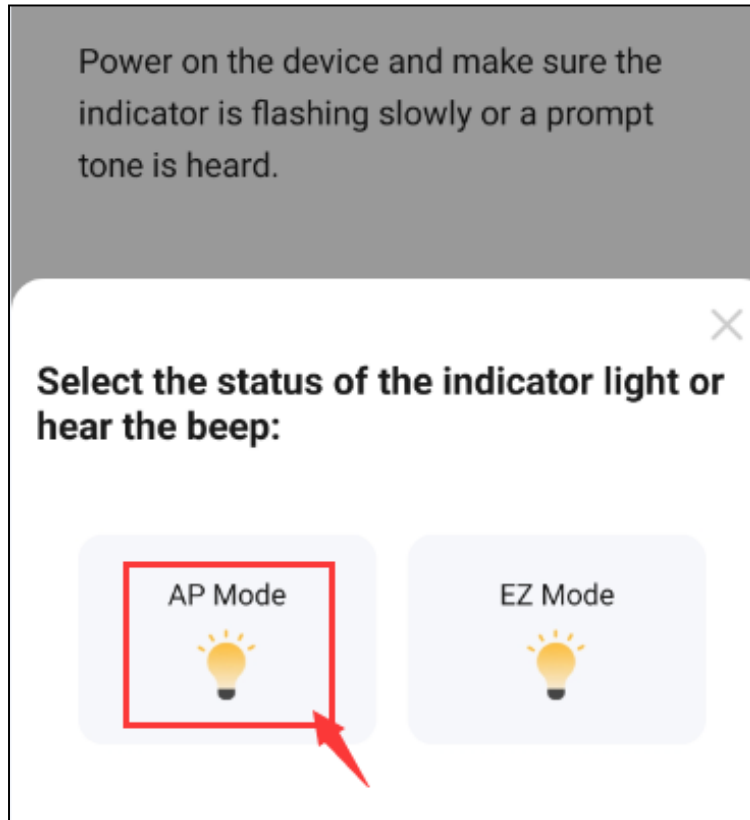


3) Reset the device

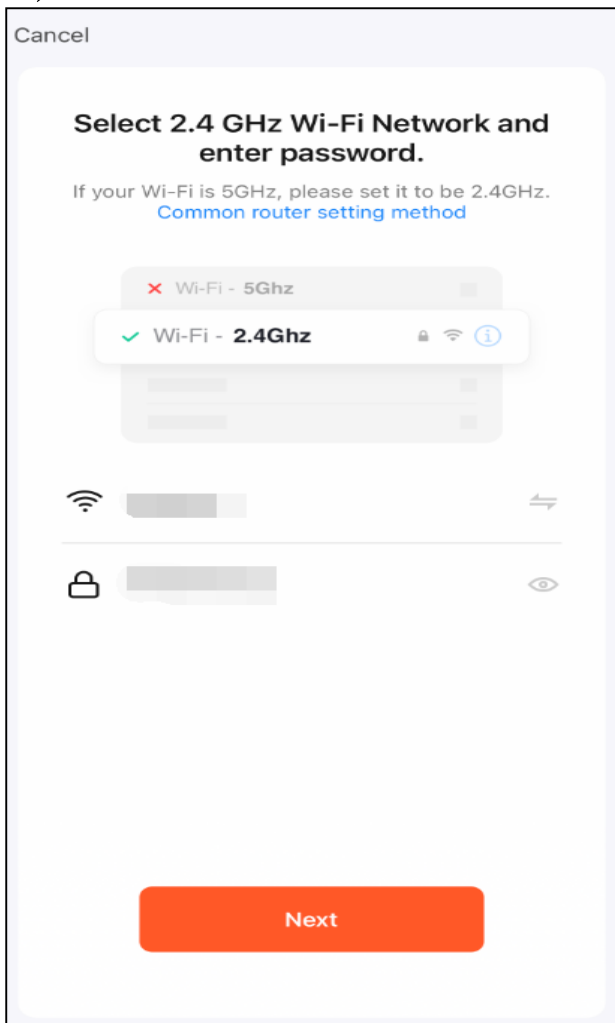


In the previous step we have completed the reset step, you can click Next step.

4) Select AP Mode



5) Connect to 2.4GHz WiFi network



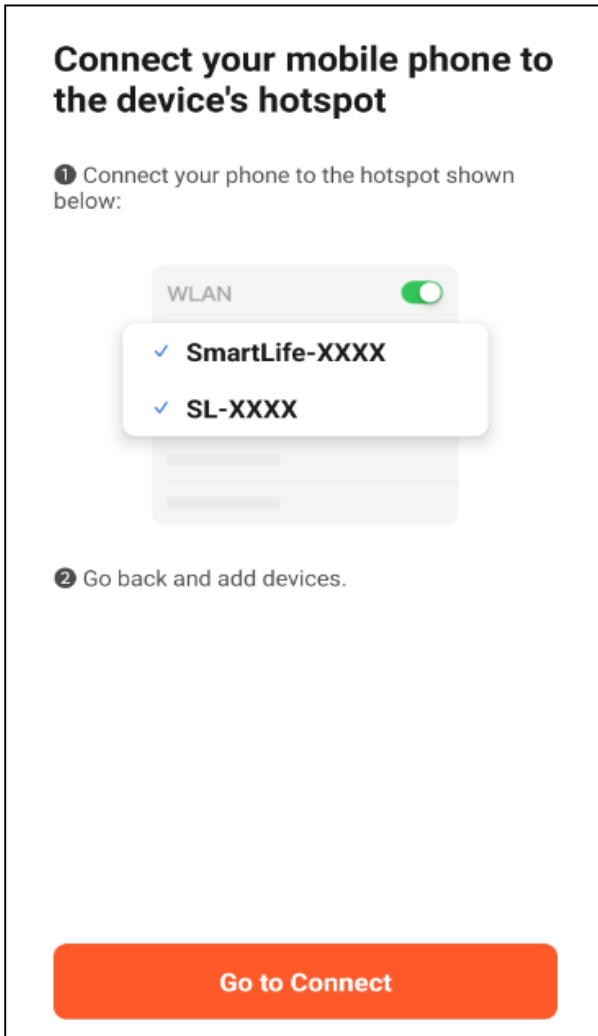
Locate your router 2.4GHz WiFi name and make sure you have entered the correct password, then click "next".

Please note:

1.If your router has two Wi-Fi signals, do not choose 5G. The camera only utilize the 2.4 GHz Wi-Fi band.

2.Please reset the device if you entered wrong password by accident, or you will fail to pair in the next step.

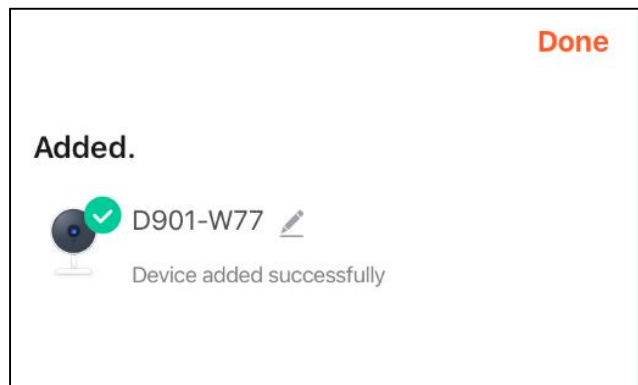
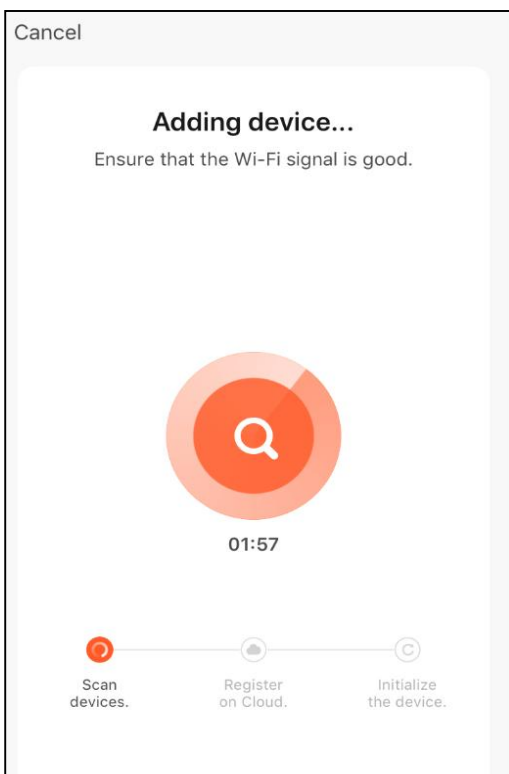
6) Connect to the device's hotspot (the key to setup)



① Click "Go to connect" to access the wifi settings of your phone, find and connect the device's hotspot, which is named with "SmartLife-xxxx" or "SL-xxxx".

② After connected, go back and add devices.

7) Pair the device



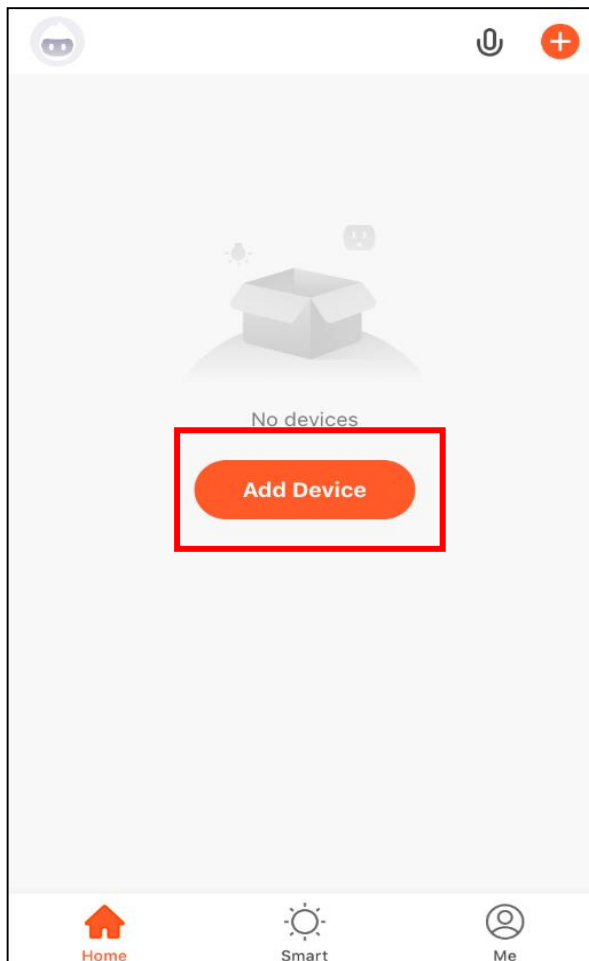
Wait for pairing, it may take two minutes, please be patient.

NOTE:

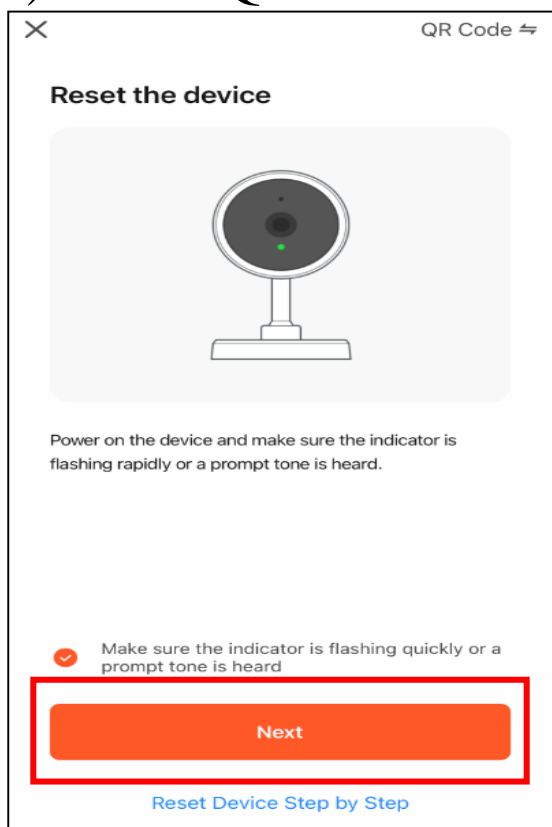
Due to signal strength, the first pairing may be unsuccessful, please try again as above steps.

Way 2. QR Code connection

1) Add the device

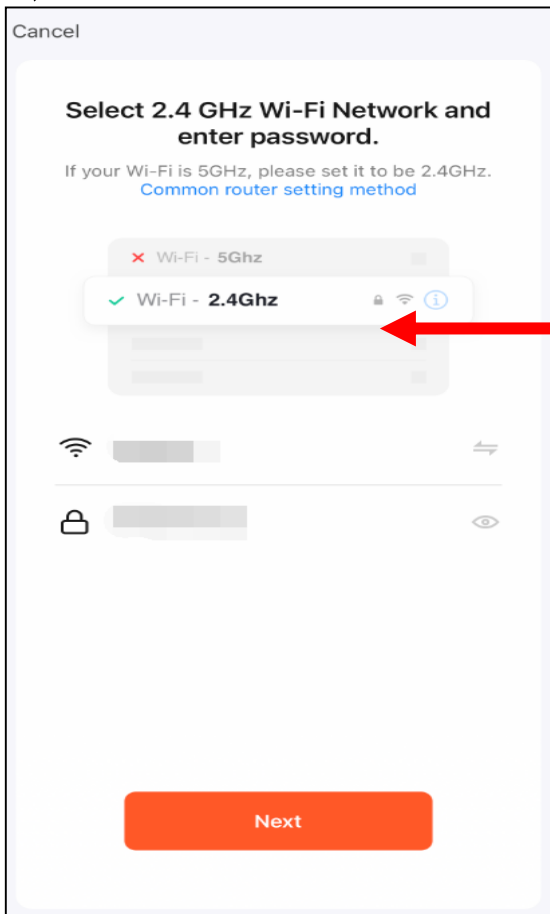


2) Select QR Code



← In the previous step we have completed the reset step, you can click Next step.

3) Connect to 2.4GHz Wifi network

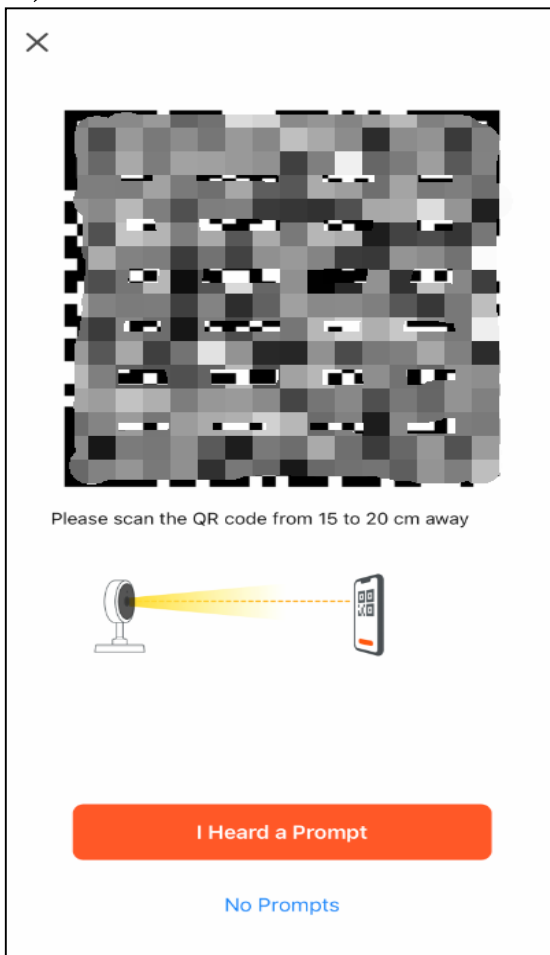


Locate your router 2.4GHz WiFi name and make sure you have entered the correct password, then click "next".

Please note:

- 1.If your router has two Wi-Fi signals, do not choose 5G. The camera only utilize the 2.4 GHz Wi-Fi band.
- 2.Please reset the device if you entered wrong password by accident, or you will fail to pair in the next step.

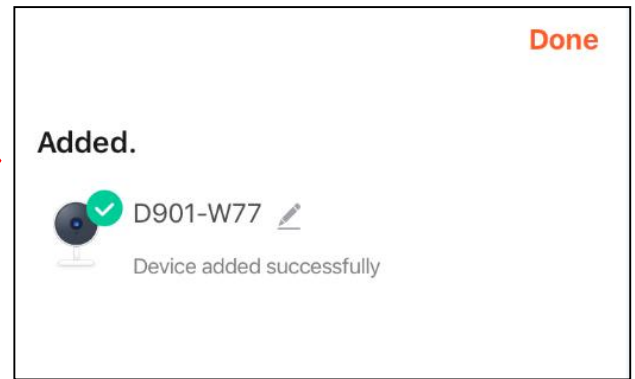
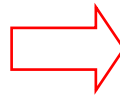
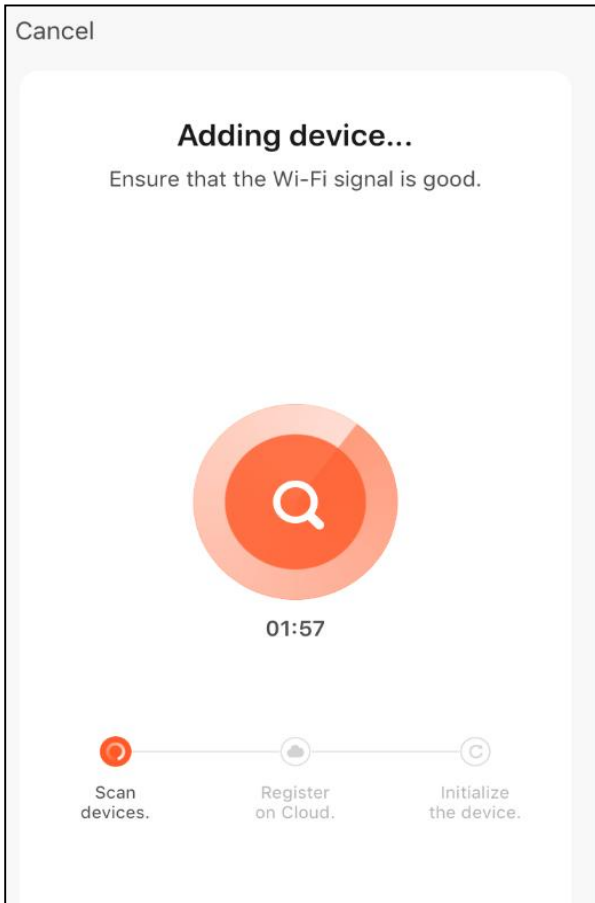
4) Pair the device with app (the key to setup)



1.Use the device's lens to read the automatically generated QR code on the phone's screen. Make sure the QR code on your mobile device is facing the lens.

2.Keep a distance of 6-7 inches (15-20cm) between your phone and the camera's lens until you hear a beep, then click "I heard a Prompt" and wait for pairing.

5) Pair the device



Wait for pairing, it may take two minutes, please be patient.

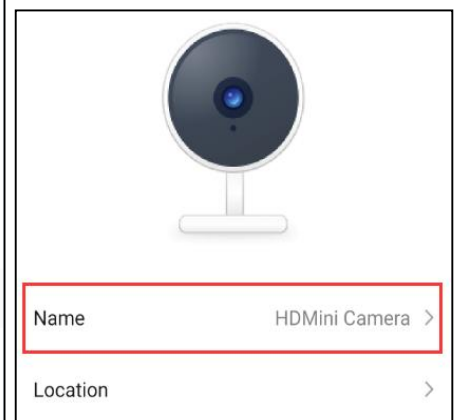
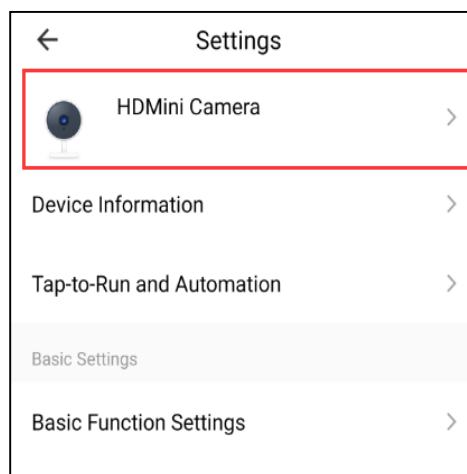
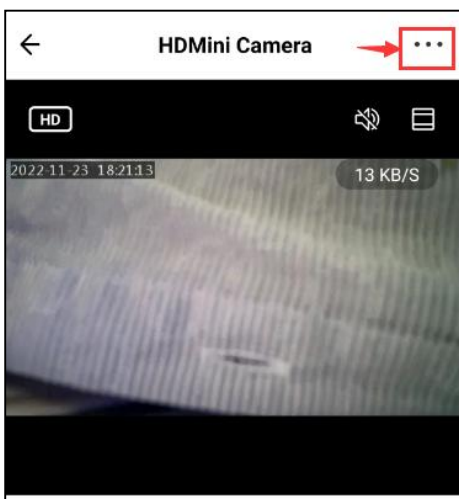
NOTE:

Due to signal strength, the first pairing may be unsuccessful, please try again as above steps.

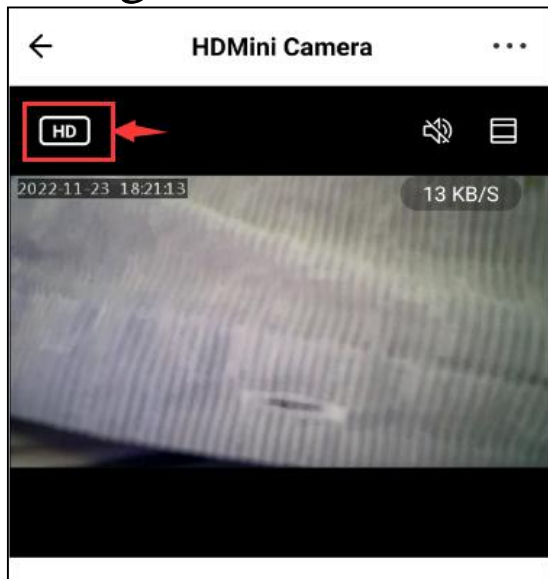
3. Basic functions

1) Name the device

You can change the device name as your needs.



2) Change the live video resolution



You can switch the video resolution between HD and SD by clicking.

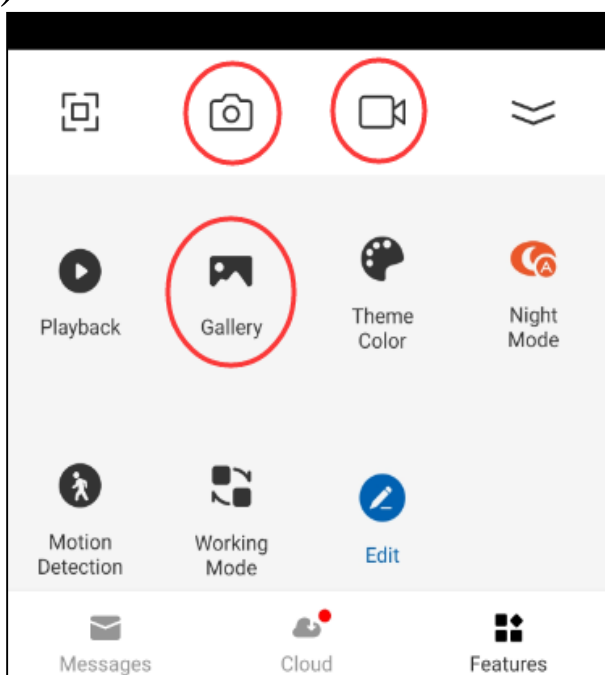
3) Turn on/off the voice



You can click it to turn on/off the voice.

Note: This function is not available for products sold in US, if you need this function, please contact us to active audio function.

4) Take a screenshot/record



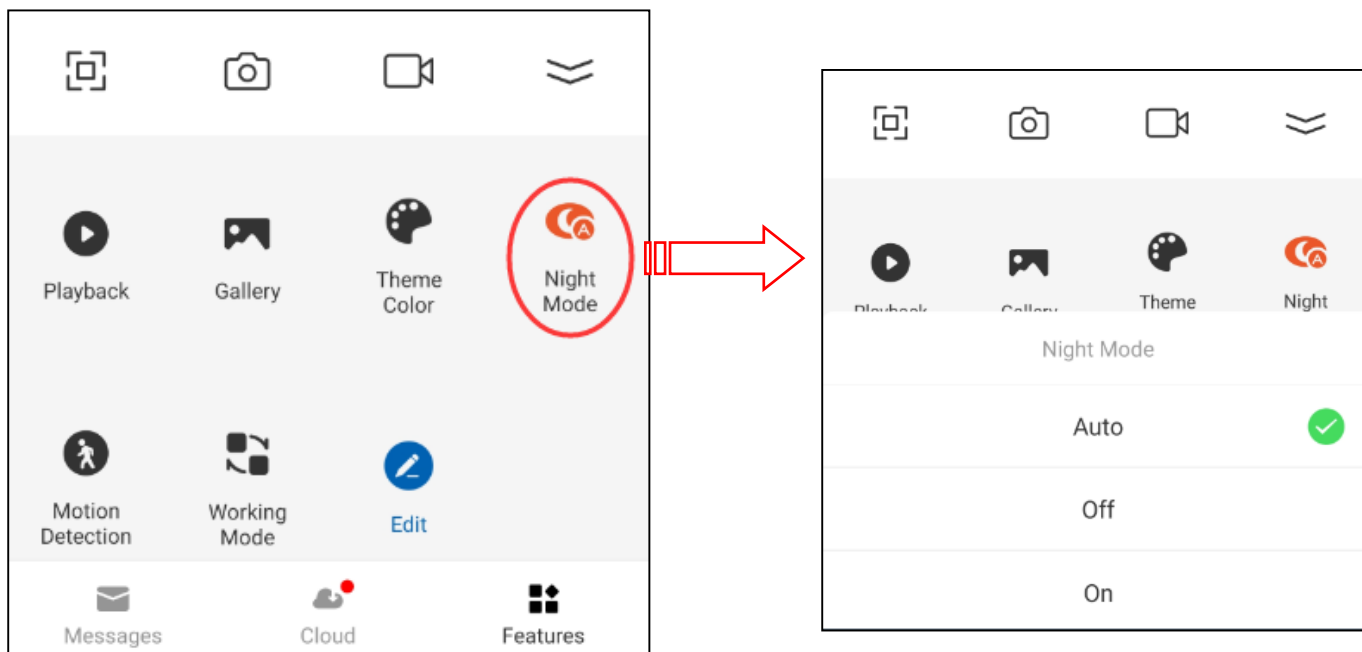
1. Click "Photo" or "Video" button when you want to take pictures or videos, which will be saved on the phone.

2. Click "Gallery" and you will find the pictures and videos you have taken.

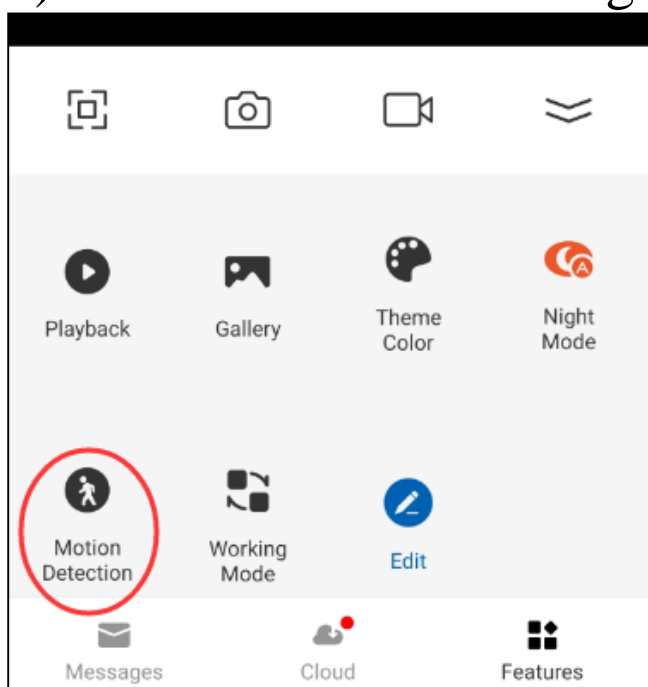
5) Night Vision

Auto mode by default, the night vision is automatically turned on and off according to the ambient light, but it will affect the results of motion detection.

It is strongly recommended that you turn on and off the night vision manually if you need to turn on the motion detection function.

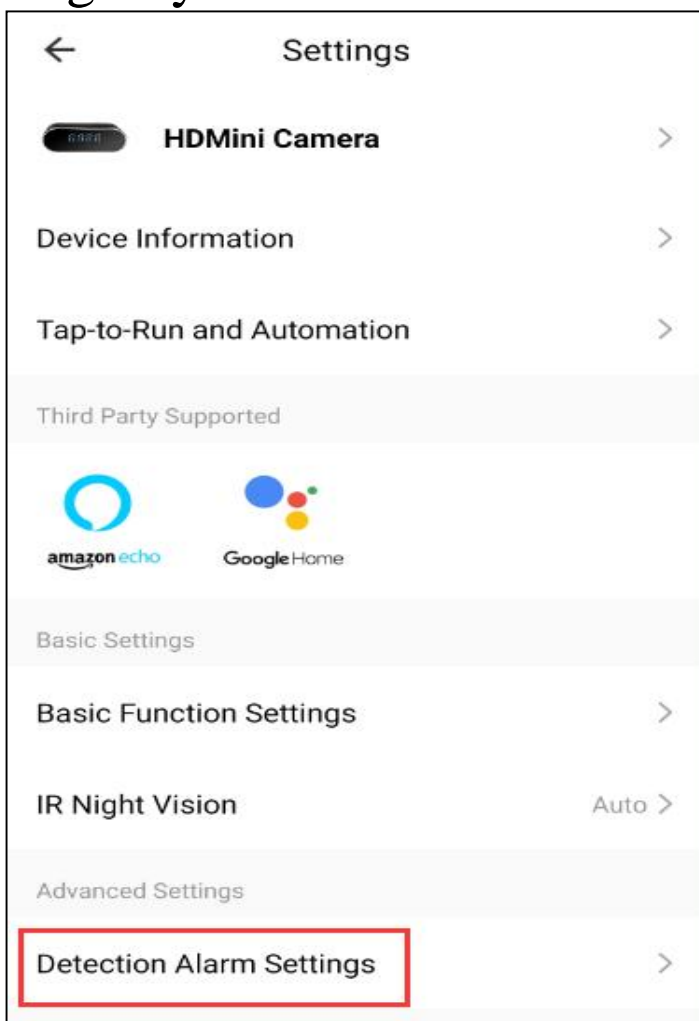
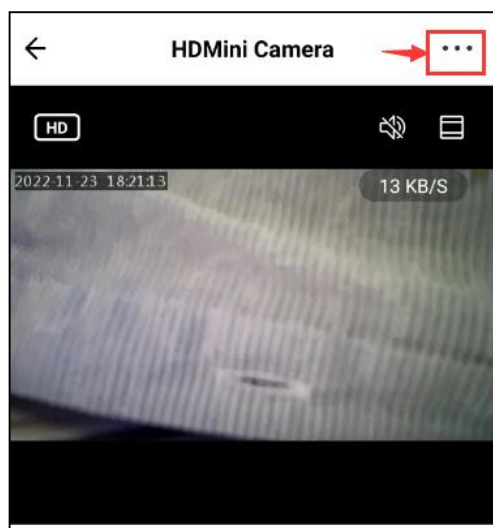


6) Motion detection configuration

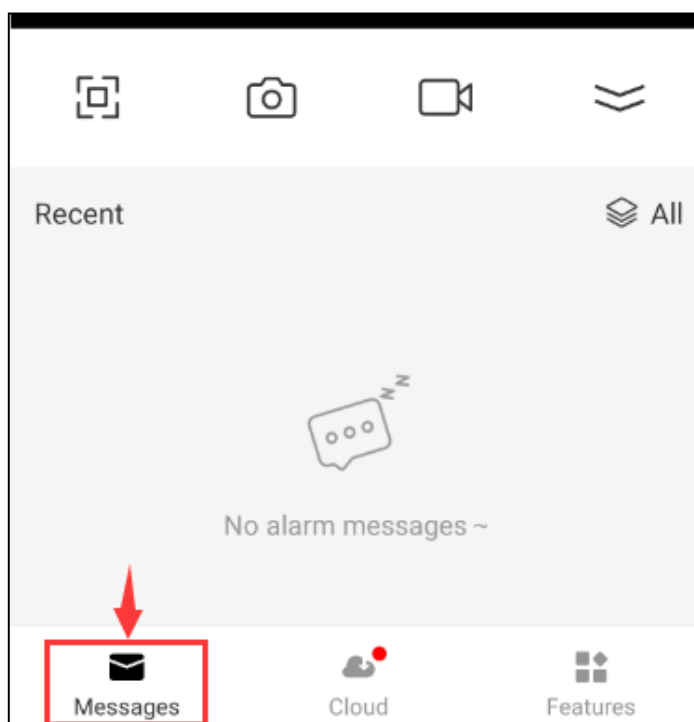


Click the "Motion Detection" button to turn on/off motion detection function.

After you turn it on, you can set alarm sensitivity level from "high" to "low" according to your needs as follow.

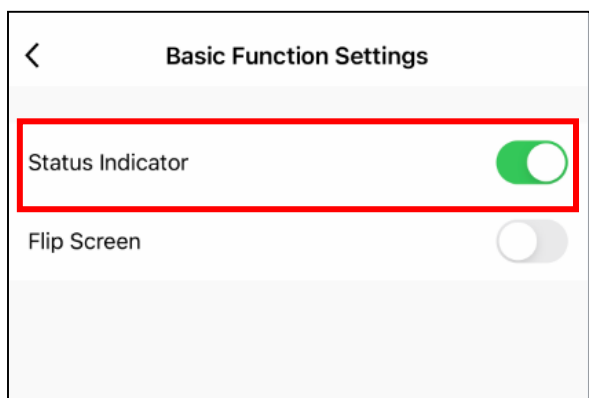
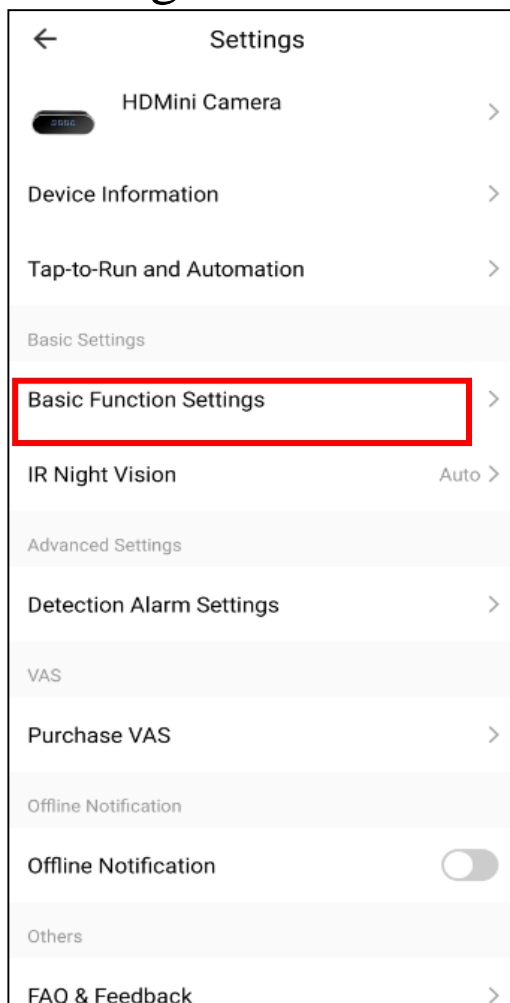
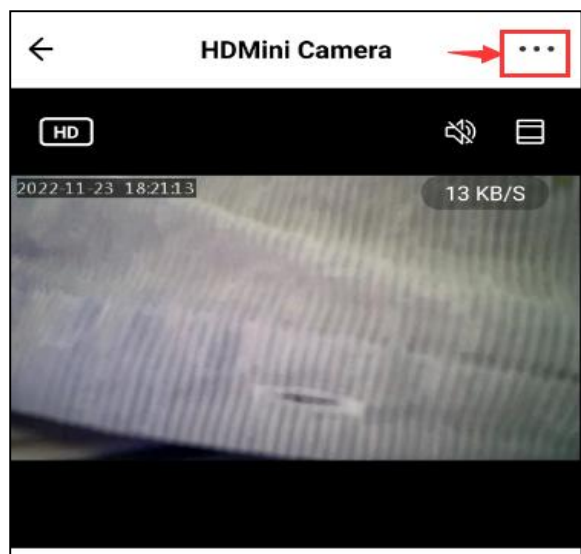


How to check the motion detection alarms?



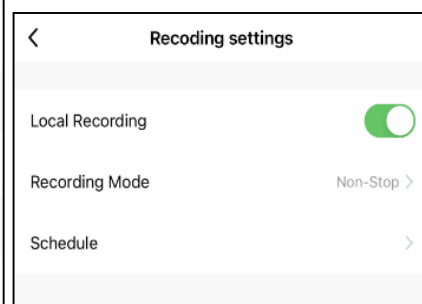
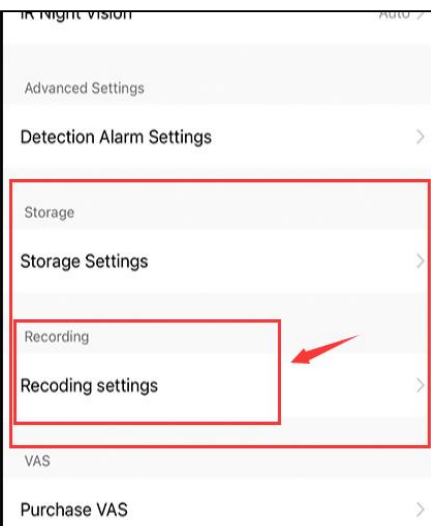
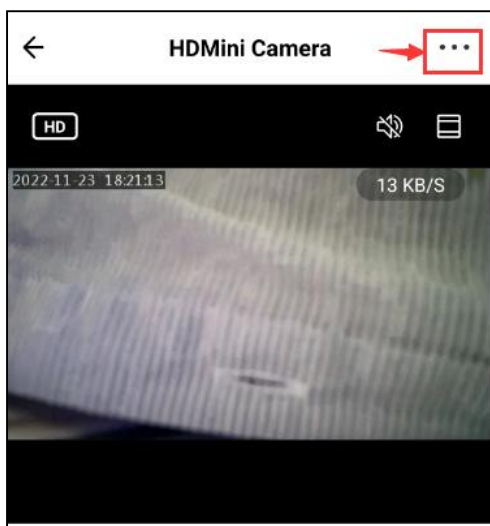
7) Turn off the indicator

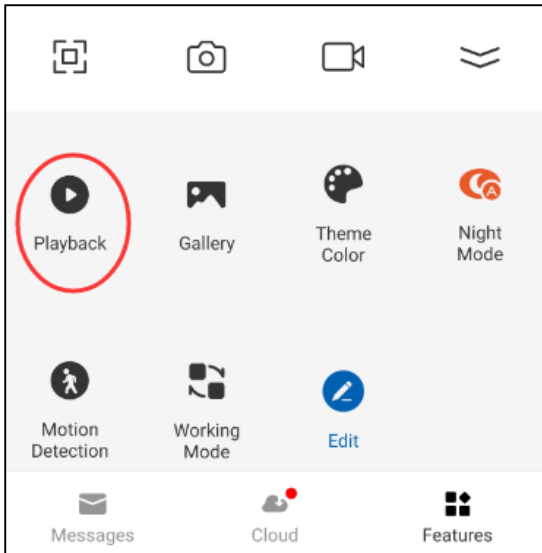
The indicator light can be turned on/off with the app. Turn it off/on with the Basic Function Settings.



8) Micro SD card recording configuration.

With a Micro SD card installed recording can be stopped and started.





Playback can be viewed online and you can download files from the Micro SD card.

4. LIMITATIONS & PRECAUTIONS

This device is intended for use in accordance with all applicable local, state, and federal laws and regulations. Neither the manufacturer nor the distributor are liable for any illegal use. User accepts all responsibilities with the operation and use of this device.

5. WARNING

- 1) Please read this manual carefully before using the device and keep it for future use.
- 2) Don't use it in any illegal places or situations as per your local laws.
- 3) For extended battery life, charge once a month if it's not being used.
- 4) In order to maintain the performance of the device, do not place or use in hot, cold, dusty or humid environment.
- 5) Prevent the product from falling or falling into the water.