



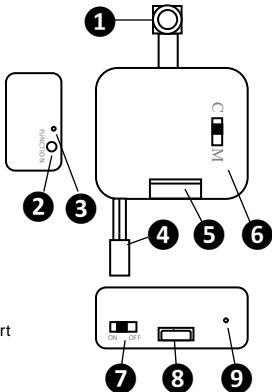
Self-Install **ATOM** Hidden Camera Kit



USER MANUAL

Overview

- 1 Camera
- 2 Pinhole Function Button
- 3 Function LED Indicator
- 4 Battery Connector
- 5 Memory Card Slot
- 6 Recording Mode Switch
- 7 On/Off Switch
- 8 USB Power & Charge Port
- 9 Charge LED Indicator



Date/Time Stamp Setup – 1/2

Setting the Date and Time stamp for your videos is easy.

Zetronix provides an easy-to-use application for both Windows and Mac that will automatically help you set up the time stamp.

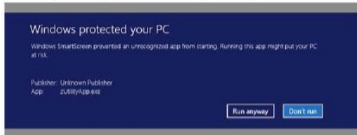
It can be found at the following address.

<http://zetronix.com/download/>



Date/Time Stamp Setup – 2/2

On some systems you may get a warning during installation.



This is normal. Simply click RUN ANYWAY and continue.

On an Apple computer you may get a similar warning. Go into CONTROL PANEL and choose SECURITY. UNLOCK the security settings and choose ALLOW ALL

Once you have installed the program, make sure you turn SECURITY SETTINGS back on.

Insert a Micro SD Memory Card into the card slot.

Operation – 1/2

Continuous Recording Mode

1. Connect the battery to the battery connector ④
2. Insert a Micro SD memory card into the card slot ⑤
3. Switch the Recording Mode Switch ⑥ to the "C" position.
4. Place the On/Off switch ⑦ to the "On" position.

The function LED indicator ③ will blink blue five times and go out to indicate a recording has started.

To pause the recording, use the included pin to press the function button ② this will put the camera in stand-by mode indicated by a solid blue light.



To resume recording, press the function button **2** again.
The LED will blink blue twice and turn off to indicate that it is recording again.

Operation – 2/2

Motion Detection Recording Mode

1. Connect the battery to the battery connection ④
2. Insert a Micro SD memory card into the card slot ⑤
3. Switch the Recording Mode Switch ⑥ to the "M" position.
4. Place the On/Off switch ⑦ to the "On" position.

The LED indicator ③ will blink Blue three times and Red once to indicate the recording has started.

When motion is detected the camera will record for 3 minutes. It will stop recording if no motion is detected during the 3 minutes.

Use the included pin to press the Function button ② to pause all recording and enter standby mode; indicated by solid Red.

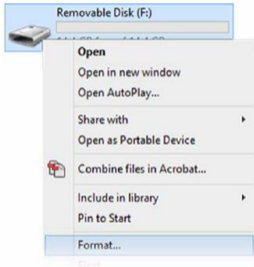
Press it again to resume recording. The Red LED will turn off and continue recording once motion is detected.

Formatting Memory on a PC/Windows - 1/2

Formatting the memory card deletes all files and may fix recording issues caused by memory corruption.

Locate your hard drive directory.

It will be under "My Computer" or "This PC". You can also open a new File Explorer window and your drives will be listed there. The camera will appear as a removable drive like this.



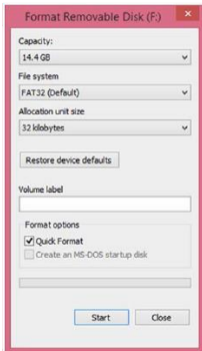
Right Click on the removable drive and select Format

Formatting Memory on a PC/Windows - 2/2

From the options shown, make sure that you have selected **FAT32** or as your file system. Leave other settings at their defaults.

Click **Start**.

WARNING: Any files on your card will be lost including your time-stamp settings. Record at least one video with your camera to install the file directory on your card. After you have restored the directory you can re-install the time-stamp settings.

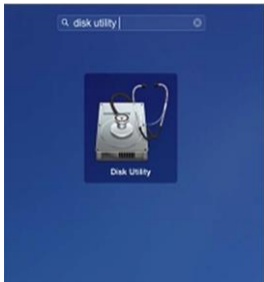


Formatting Memory on a Mac/iOS – 1/2

Formatting the memory card deletes all files and may fix recording issues caused by memory corruption.

Locate and open a program called “Disk Utility”. It is usually found by going into the application folder and opening the utility folder.

App Locations > Utilities

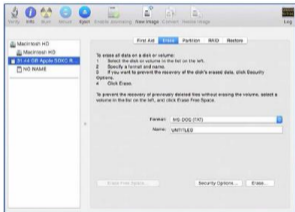


Formatting Memory on a Mac/iOS – 2/2

In **Disk Utility**, Select your camera removable drive from the list on the left. From the options on the right click the menu button labeled **Erase** (highlighted in blue below) From the dropdown menu labeled **Format**, choose MS-DOS (FAT).

You can name the drive whatever you'd like. When ready, click the button in the lower right corner labeled **Erase**.

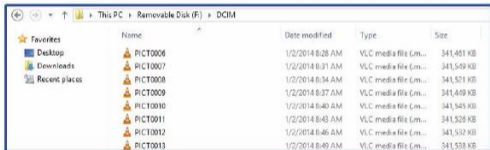
Record a video of any length to reinstall the file system on the memory card.



Video Playback

Videos can be reviewed and copied to a hard drive by removing the micro SD card from the camera and inserting it into a computer.

It will come up as a removable drive and all the files can be accessed by opening the folder named "DCIM":



Name	Date modified	Type	Size
PICT0006	1/2/2014 8:28 AM	VLC media file (m...	341,461 KB
PICT0007	1/2/2014 8:31 AM	VLC media file (m...	341,549 KB
PICT0008	1/2/2014 8:34 AM	VLC media file (m...	341,521 KB
PICT0009	1/2/2014 8:37 AM	VLC media file (m...	341,449 KB
PICT0010	1/2/2014 8:40 AM	VLC media file (m...	341,545 KB
PICT0011	1/2/2014 8:43 AM	VLC media file (m...	341,526 KB
PICT0012	1/2/2014 8:46 AM	VLC media file (m...	341,532 KB
PICT0013	1/2/2014 8:49 AM	VLC media file (m...	341,538 KB

For playback we currently recommend a free program called VLC Player found at www.videolan.org

Battery Charging

1. Connect the battery to the battery connection ④
2. Connect the included USB cable to the USB port ⑧
3. Connect the other end of the USB cable to the USB wall charger and plug in the charger to an A/C outlet.

A full charge may take anywhere from 1 to 6 hours. The LED charge indicator light ⑨ will be on until fully charged.

Device Specifications

Sensor	2 Megapixel CMOS
Video Resolution	1920x1080
Compression Format	h.264
Video Format	.MOV
Frame Rate	30 FPS
Camera Angle	90 Degrees
Max Memory	64GB

Still Have Questions?

Do not return your camera

For additional assistance contact

Zetronix Tech Support

By Phone..... 877-644-7592

By Email.....support@Zetronix.com

Live Chat at Zetronix.com

9AM-5PM EST Monday to Friday

1 Year Limited Warranty

Zetronix Corporation ("Zetronix") warrants this product against defects in material or workmanship as follows: **PRODUCT:** Zetronix will repair this product with new or refurbished parts, free of charge, for a period of one (1) year from the date of original purchase in the event of a defect in materials or workmanship. **REPAIRS:** Zetronix will repair or replace defective parts used in the repair or replacement of this product with new or refurbished parts, free of charge, for a period equal to the remainder of the original limited warranty period on the original product, or for 60 days after the date of the repair or replacement, whichever is longer. This warranty is extended only to the original purchaser. Proof of purchase in the form of a bill of sale or receipted invoice, which is evidence that the unit is within the warranty period, must be presented to obtain warranty service. To obtain warranty service, you must take this product, or deliver the product freight prepaid, in either its original packaging or packaging affording an equal degree of protection, to Zetronix Corporation. See below for additional information. This warranty only covers failures due to defects in materials and workmanship, which occur during normal use.

The warranty does not cover damages, which occurred in shipment, cosmetic damage, damage that is attributable to acts of God, failures which are caused by products not supplied by the warrantor, or failures which result from accident, misuse, abuse, neglect, mishandling, faulty installation, misapplication, improper installation, operation or maintenance, alteration, modification, introduction of sand, humidity or liquids, line power surge, improper voltage supply, lightning damage, or subjecting the product to operating/environmental conditions in excess of the maximum values or

1 Year Limited Warranty

below the minimum values set forth in the applicable specifications, or products serviced by anyone other than Zetronix. This warranty is invalid if the factory-applied serial number has been altered or removed from the product. This warranty does not cover products sold AS IS or WITH ALL FAULTS. This warranty excludes consumable parts such as batteries and power supplies.

Zetronix Corporation ("Zetronix") warrants this product against defects in material or workmanship as follows: **PRODUCT:** Zetronix will repair this product with new or refurbished parts, free of charge, for a period of one (1) year from the date of original purchase in the event of a defect in materials or workmanship. **REPAIRS:** Zetronix will repair or replace defective parts used in the repair or replacement of this product with new or refurbished parts, free of charge, for a period equal to the remainder of the original limited warranty period on the original product, or for 60 days after the date of the repair or replacement, whichever is longer. This warranty is extended only to the original purchaser. Proof of purchase in the form of a bill of sale or receipted invoice, which is evidence that the unit is within the warranty period, must be presented to obtain warranty service. To obtain warranty service, you must take this product, or deliver the product freight prepaid, in either its original packaging or packaging affording an equal degree of protection, to Zetronix Corporation. See below for additional information. This warranty only covers failures due to defects in materials and workmanship, which occur during normal use.

1Year Limited Warranty (cont.)

The warranty does not cover damages, which occurred in shipment, cosmetic damage, damage that is attributable to acts of God, failures which **are** caused by products not supplied by the warrantor, or failures which result from accident, misuse, abuse, neglect, mishandling, faulty installation, misapplication, improper installation, operation or maintenance, alteration, modification, introduction of sand, humidity or liquids, line power surge, improper voltage supply, lightning damage, or subjecting the product to operating/environmental conditions in excess of the maximum values or below the minimum values set forth in the applicable specifications, or products serviced by anyone other than Zetronix. This warranty is invalid if the factory-applied serial number has been altered or removed from the product. This warranty does not cover products sold AS IS or WITH ALL FAULTS. This warranty excludes consumable parts such as batteries and power supplies.

<http://help.zetronix.com>

©2018 Zetronix Corp.