

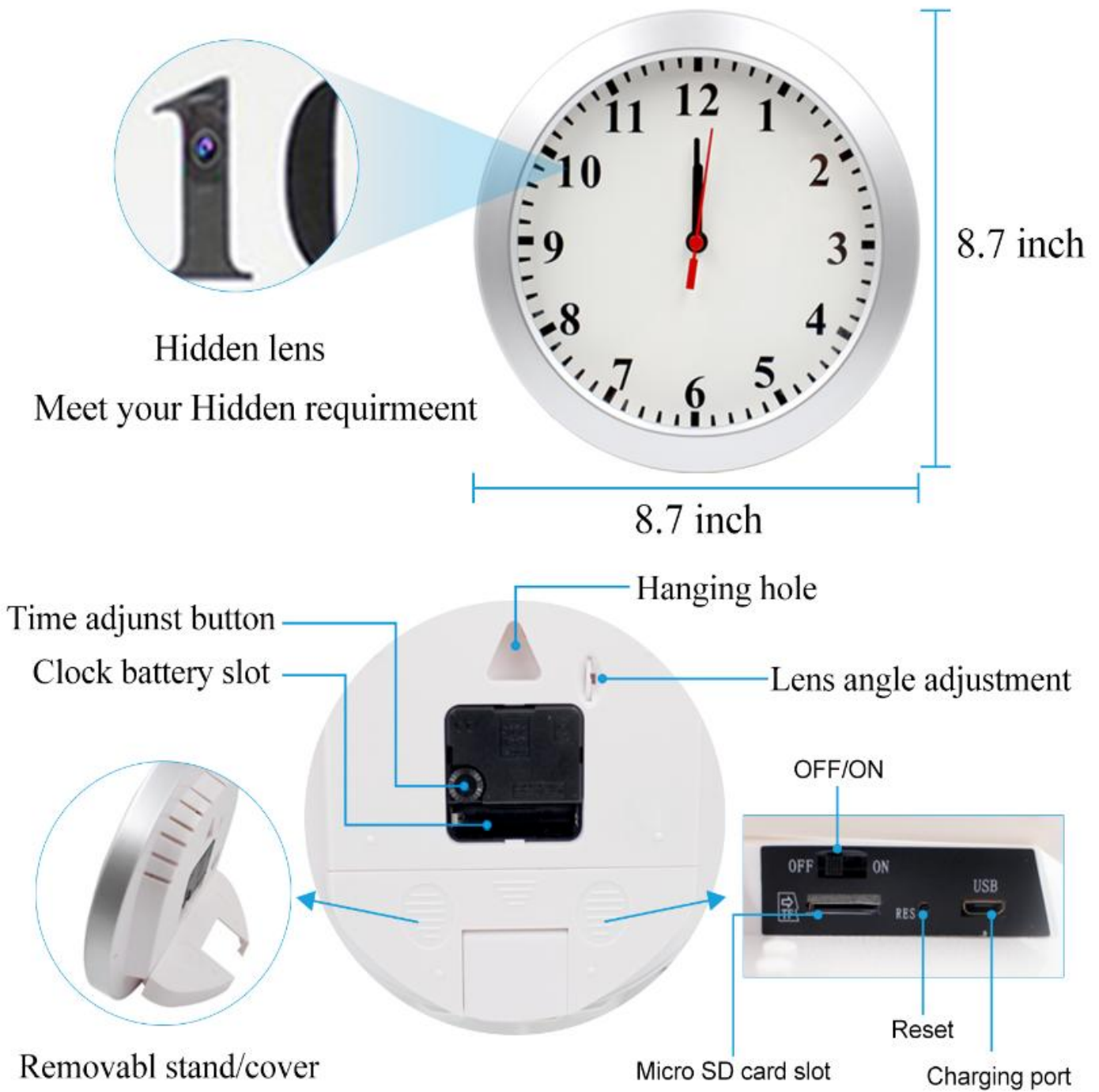


# HERA

Wall clock with WiFi Hidden Camera

USER MANUAL

# Product Diagram



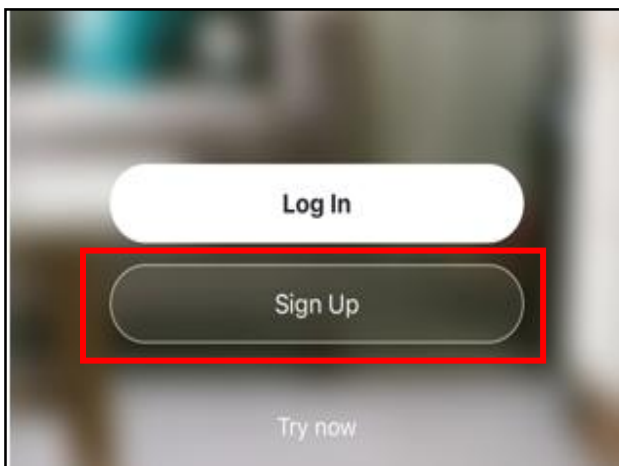
**Note:** built-in rechargeable battery is only for the camera, a separate AA battery is needed for the clock.

# 1. Download and sign in the app

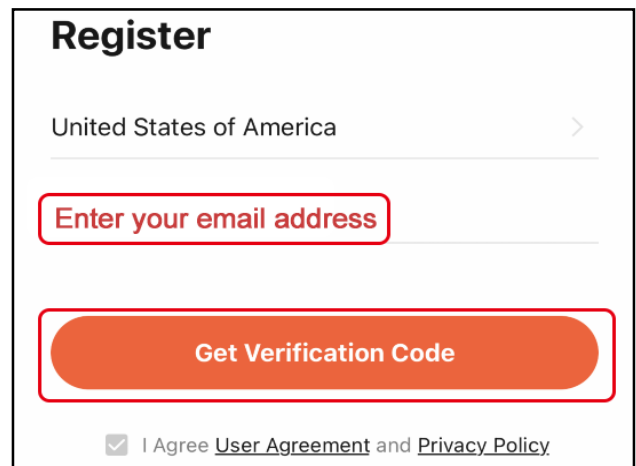
Search and download TuyaSmart on the App Store or Google Play.



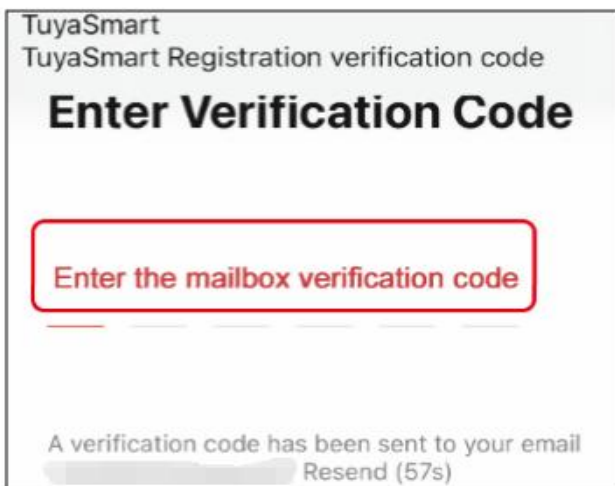
After downloading the TuyaSmart app, you will need to sign up for an account to protect your privacy.



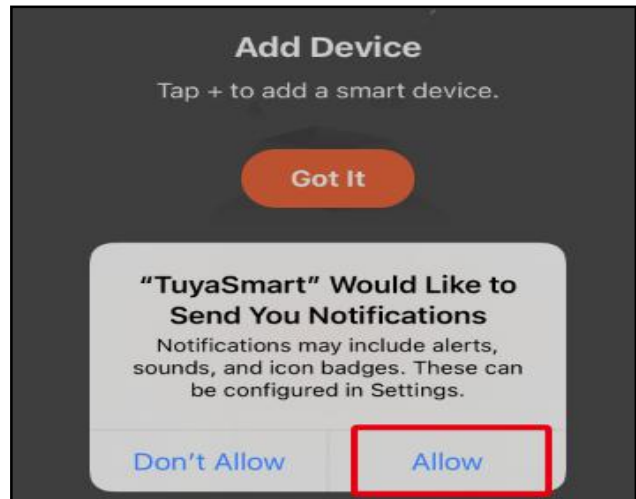
1. Sign up



2. Enter your e-mail address



3. Enter the code sent to you



4. Allow all the request

## 2. Setup instructions

### STEP 1. Charge the camera

Due to prolonged transportation time during shipping, the battery power might be low, charge the camera for 4-6 hours before first using. (It is recommended that you to plug it into an outlet for 24/7 operation.)

**Note:** Camera will operate approximately 5 hours after full charged if not plugged.

### STEP 2. Insert a Micro SD card

Insert a Micro SD card if you want to save the videos, camera supports up to 64GB (cards are not included in the package).

### STEP 3. Turn on the camera

Switch the ON/OFF switch to the ON position, you will see the blue light is steady on, wait for 20 seconds, the blue light will flash and you will hear a voice prompt of "Ready to Pair".

### STEP 4. Reset the device (Very Important)

If you do not hear the voice prompt of "Ready to Pair" after you turn on the camera, please use a pin to hold the Reset button for 7-8 seconds, you will hear a voice prompt of "Reset Successfully", then release the reset button.



The BLUE light goes off and on again, which means reset has completed.

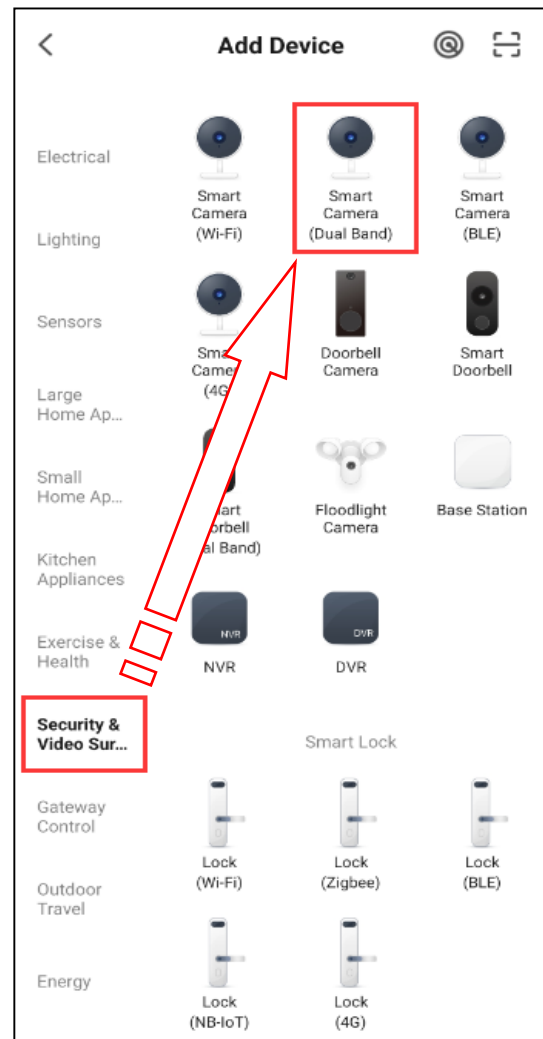
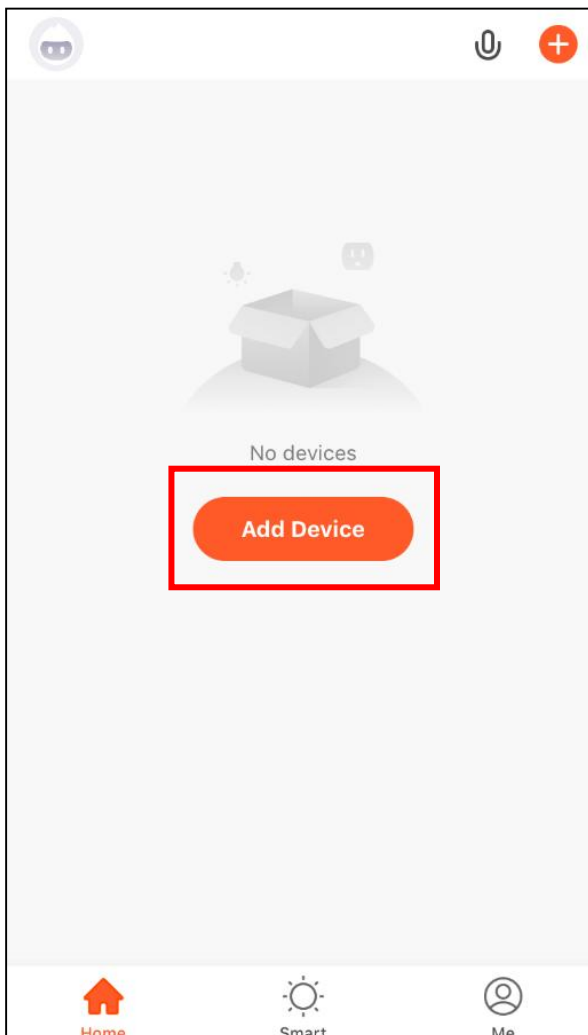
**Note:** Please wait till the blue light flashes slowly and you hear a voice prompt of "Ready to pair", then you can go to configure the camera.

## STEP 5. Set WiFi connections

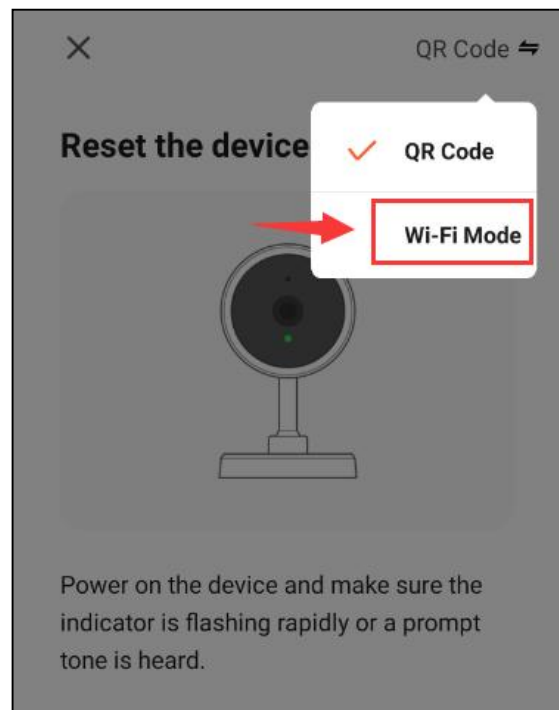
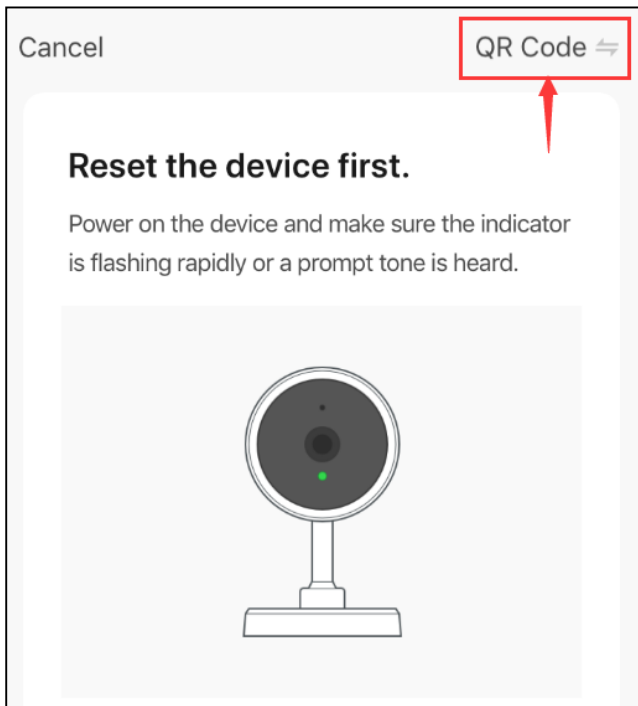
After you register your account, please follow the instructions bellow to complete the steps carefully in turn. Two ways to setup, either one is ok.

### Way 1. AP Mode connection (Recommend)

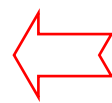
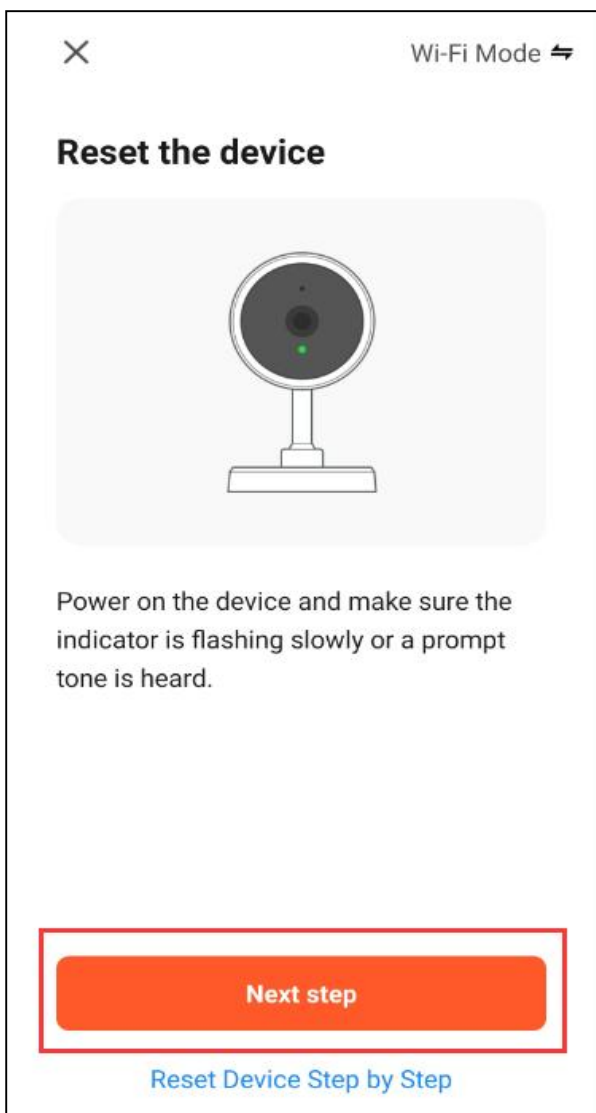
#### 1) Add the device



## 2) Select Wi-Fi Mode

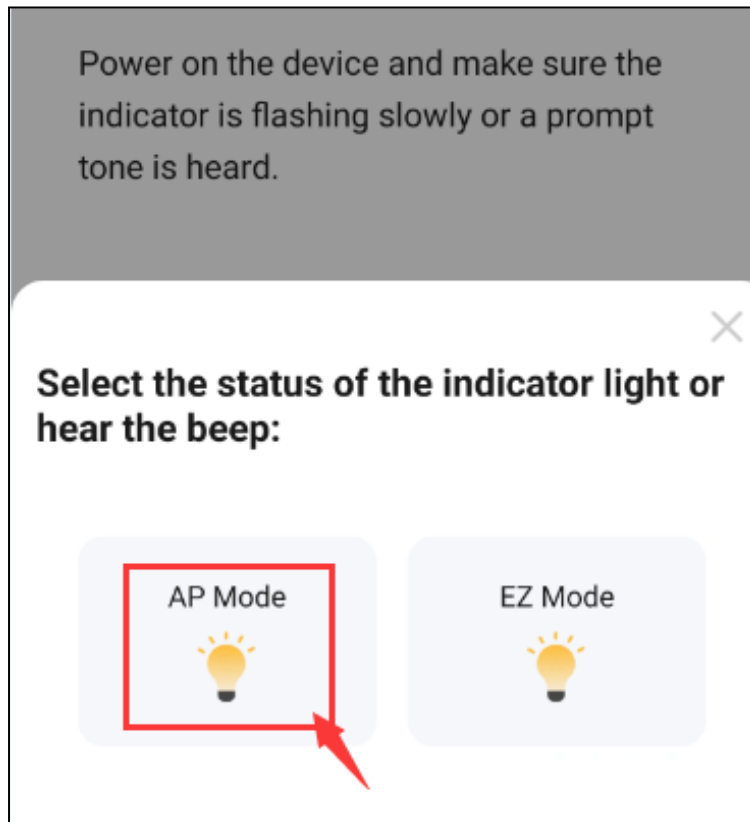


## 3) Reset the device

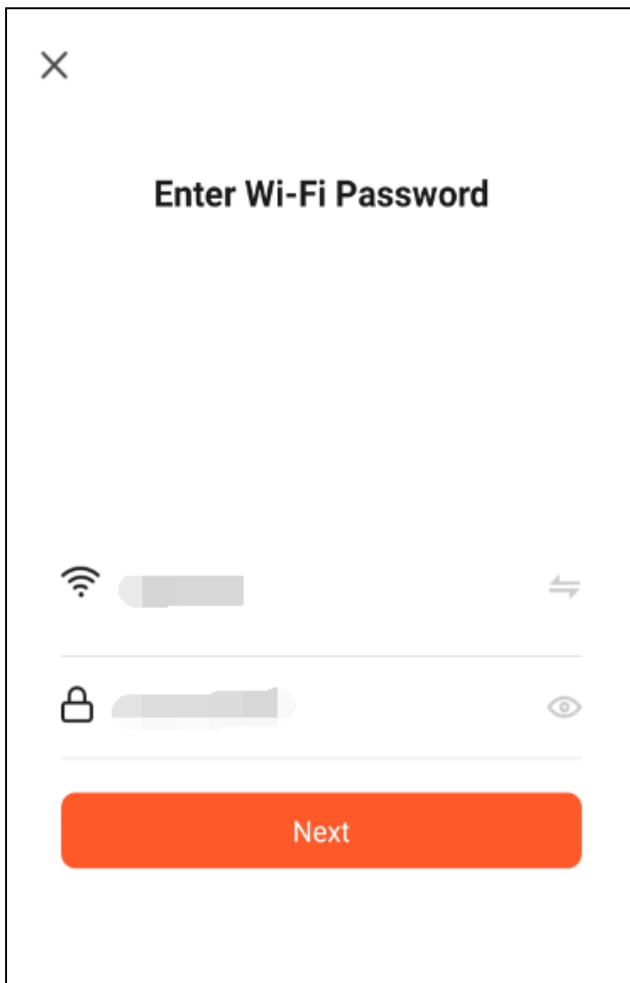


In the previous step we have completed the reset step, you can click Next step.

## 4) Select AP Mode



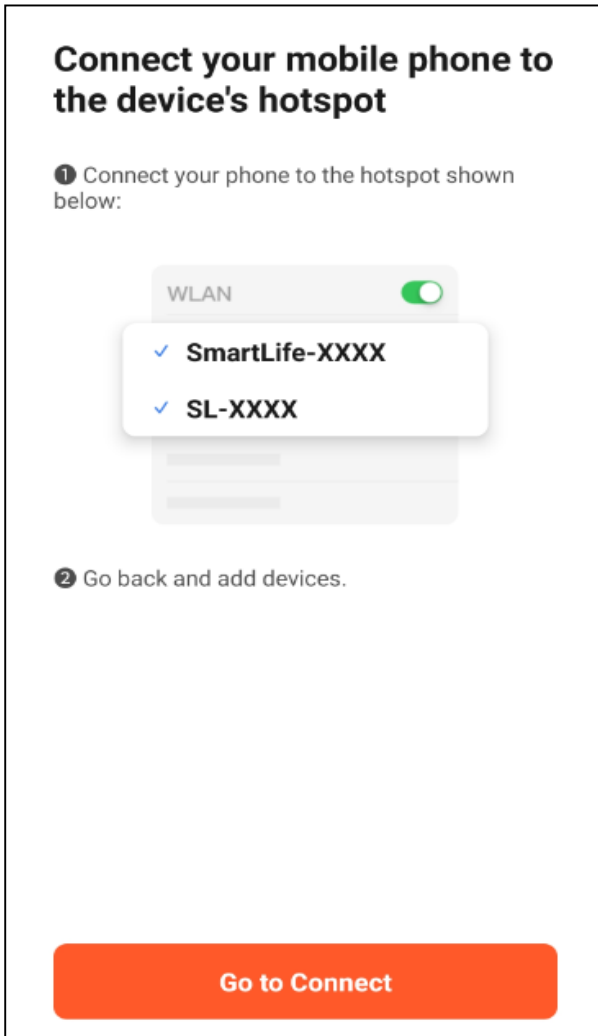
## 5) Connect to WiFi network



Locate your router WiFi name and make sure you have entered the correct password, then click "Next".

**Please reset the device if you entered wrong password by accident, or you will fail to pair in the next step.**

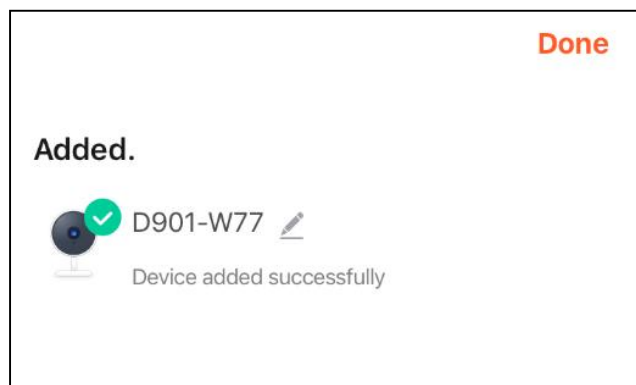
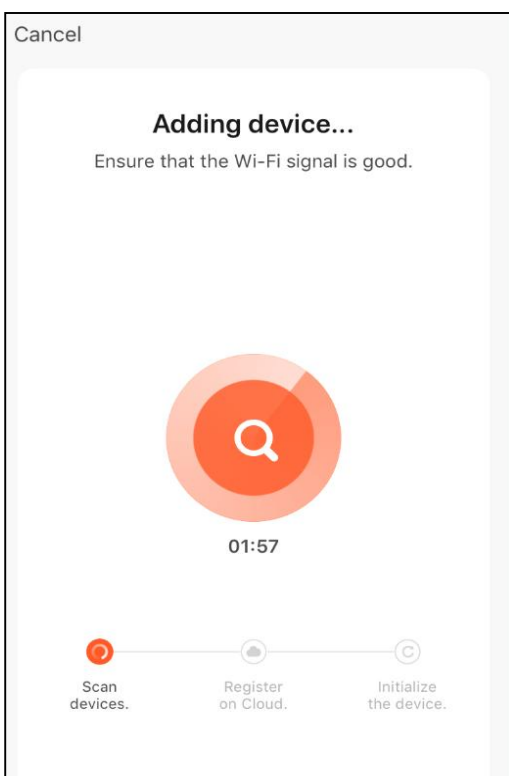
## 6) Connect to the device's hotspot (the key to setup)



① Click "Go to connect" to access the wifi settings of your phone, find and connect the device's hotspot, which is named with "SmartLife-xxxx" or "SL-xxxx".

② After connected, go back and add devices.

## 7) Pair the device

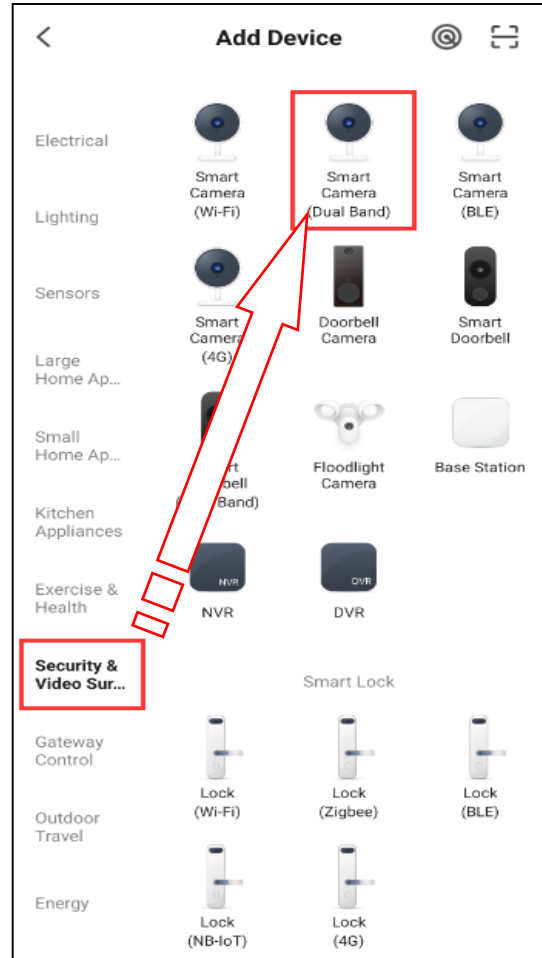
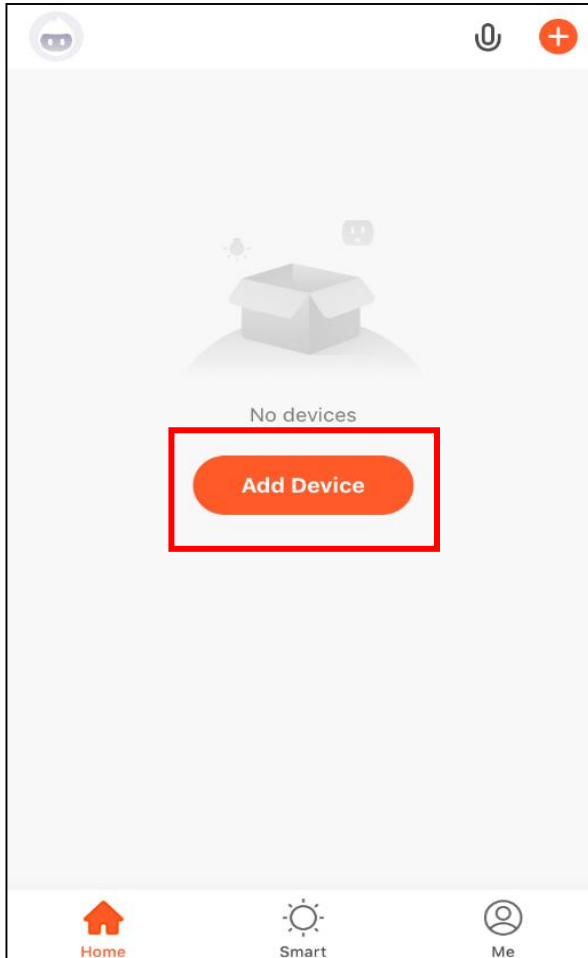


Wait for pairing, it may take two minutes, please be patient. **NOTE: Due to signal strength, the first pairing may be unsuccessful, please try again as above steps.**

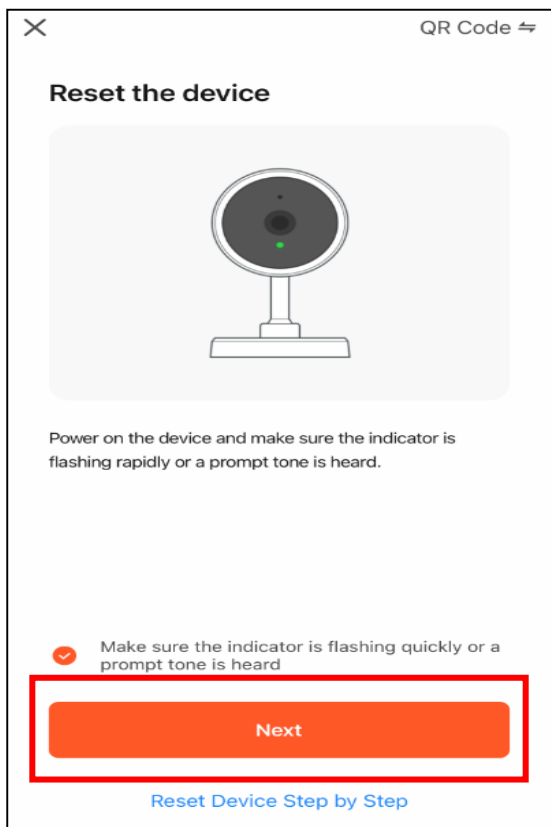


# Way 2. QR Code connection

## 1) Add the device

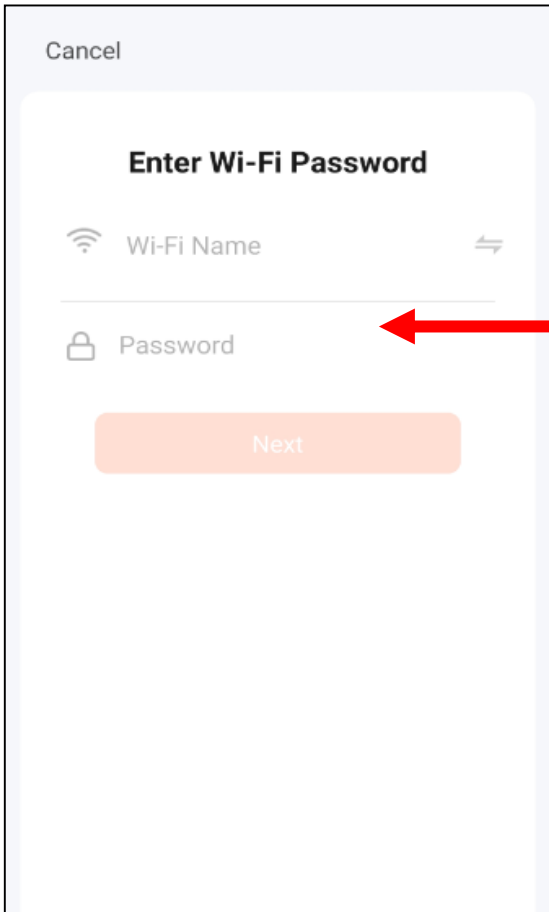


## 2) Select QR Code



← In the previous step we have completed the reset step, you can click Next step.

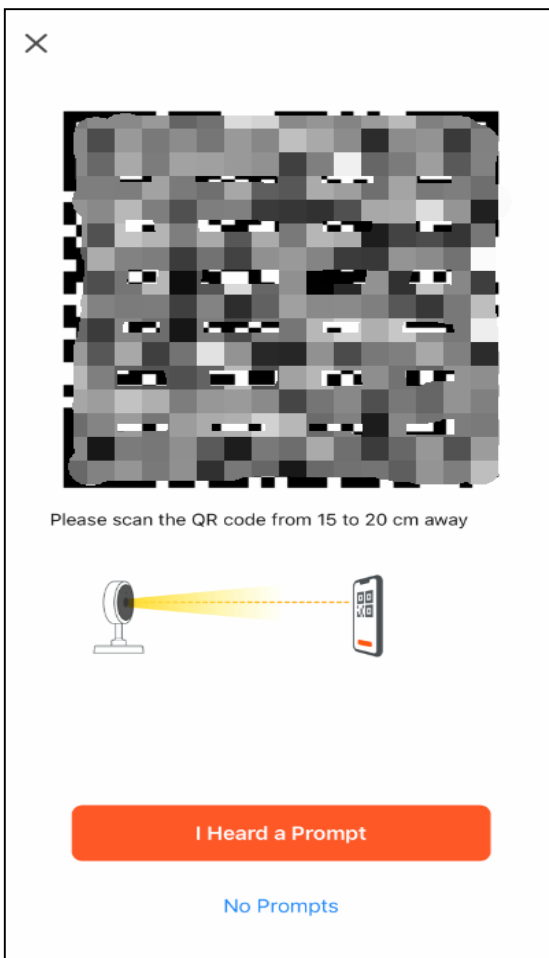
### 3) Connect to Wifi network



Locate your router WiFi name and make sure you have entered the correct password, then click "next".

Please reset the device if you entered wrong password by accident, or you will fail to pair in the next step.

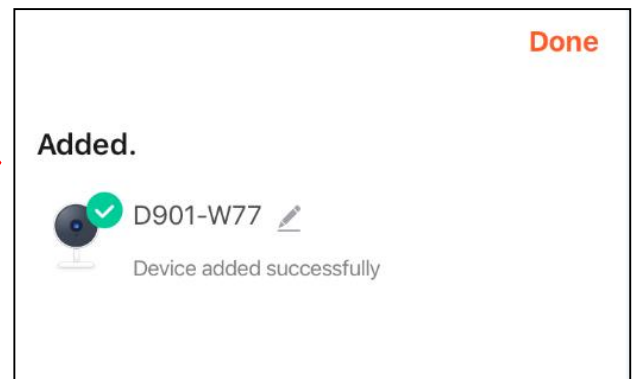
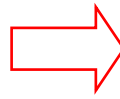
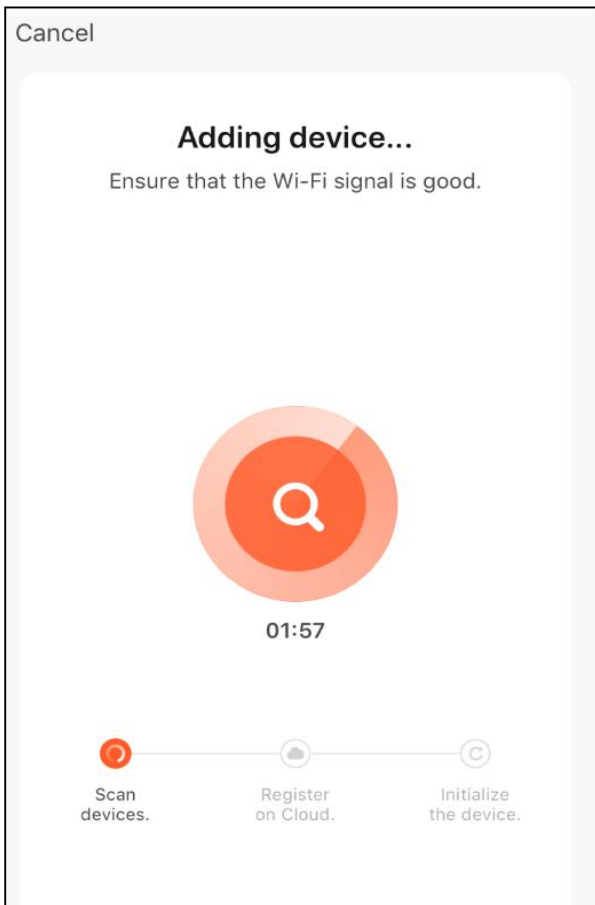
### 4) Pair the device with app (the key to setup)



1. Use the device's lens to read the automatically generated QR code on the phone's screen. Make sure the QR code on your mobile device is facing the lens.

2. Keep a distance of 6-7 inches (15-20cm) between your phone and the camera's lens until you hear a beep, then click "I heard a Prompt" and wait for pairing.

## 5) Pair the device

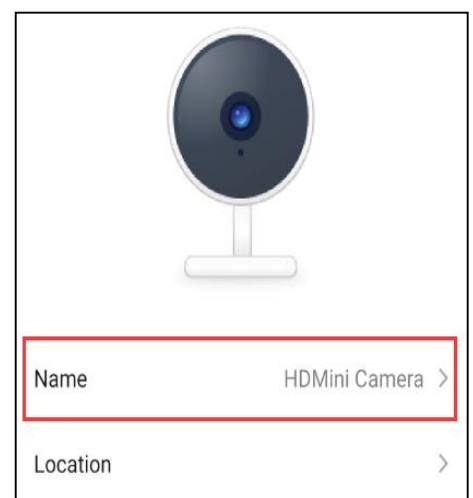
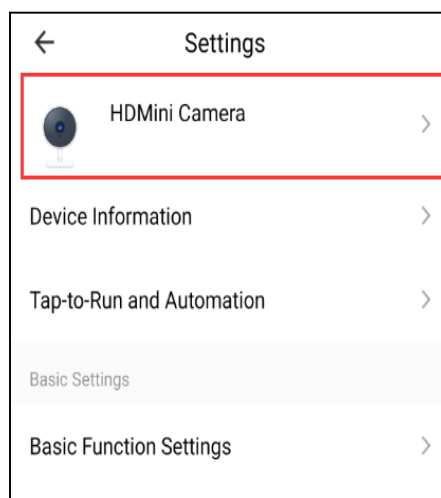
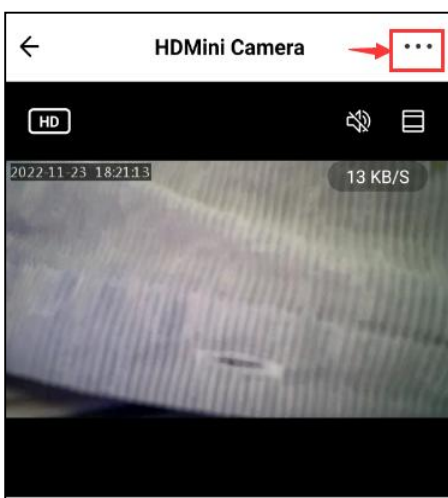


Wait for pairing, it may take two minutes, please be patient. **NOTE:** Due to signal strength, the first pairing may be unsuccessful, please try again as above steps.

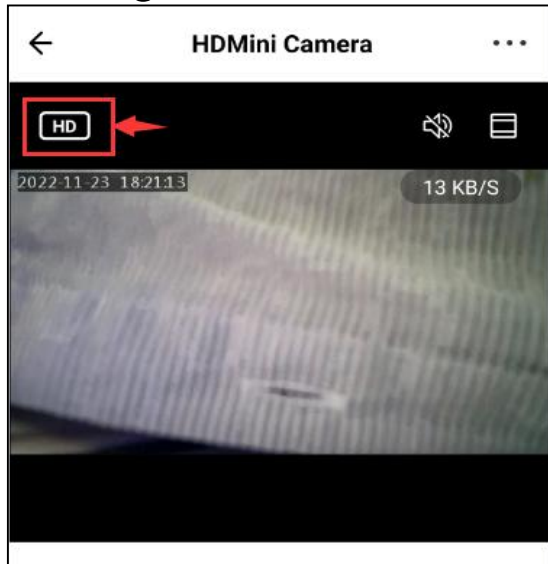
## 3. Basic functions

### 1) Name the device

You can change the device name as your needs.

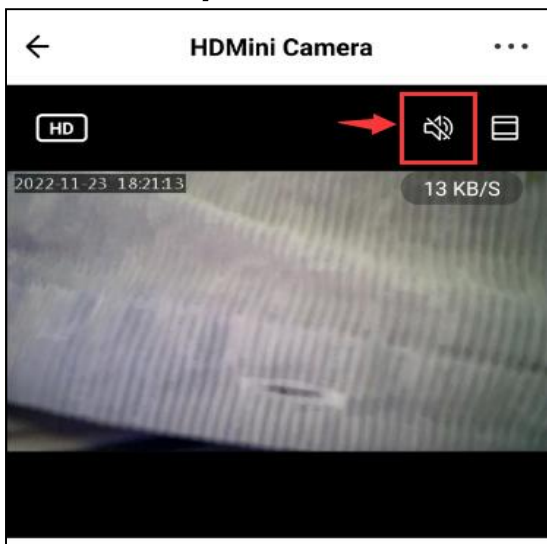


## 2) Change the live video resolution



You can switch the video resolution between HD and SD by clicking.

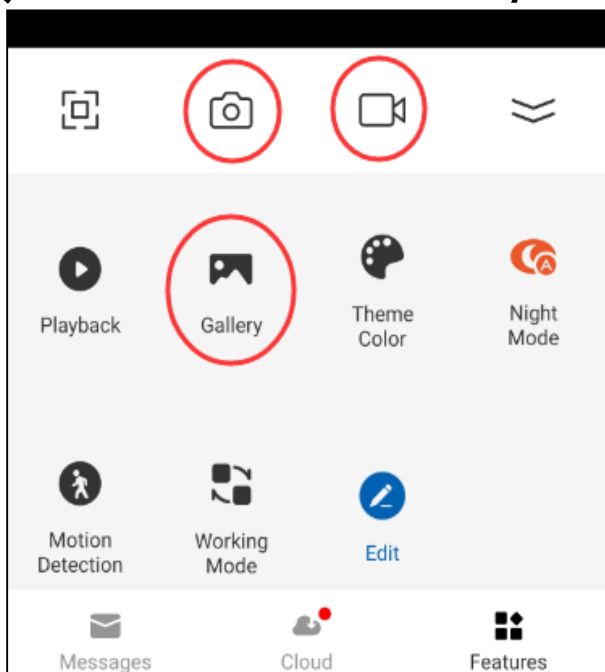
## 3) Turn on/off the voice



You can click it to turn on/off the voice.

**Note:** This function is not available for products sold in US, if you need this function, please contact us to active audio function.

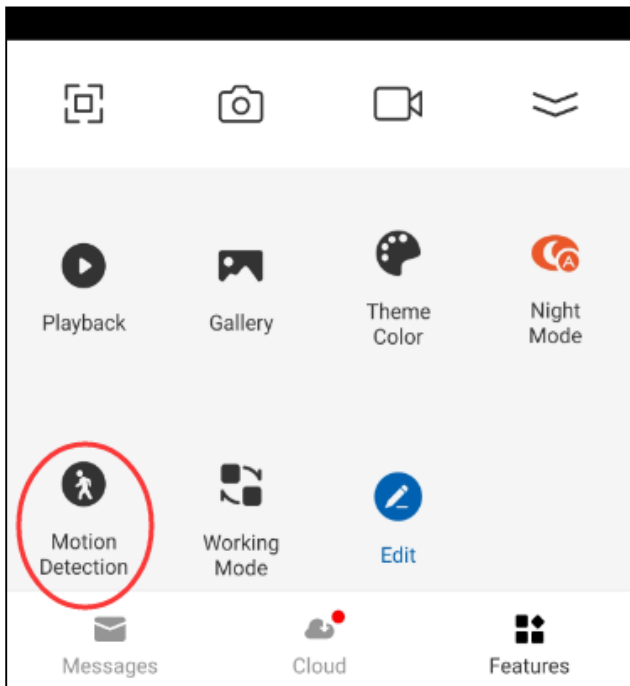
## 4) Take a screenshot/record



1. Click "Photo" or "Video" button when you want to take pictures or videos, which will saved on the phone.

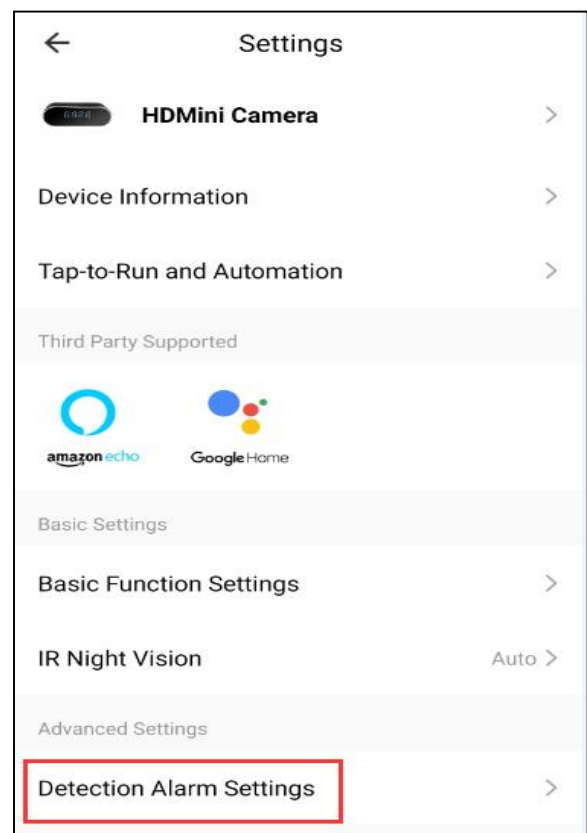
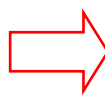
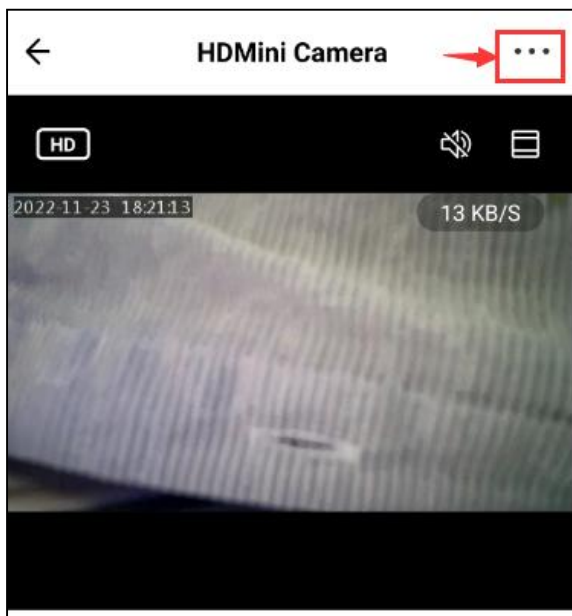
2. Click "Gallery" and you will find the pictures and videos you have taken.

## 5) Motion detection configuration

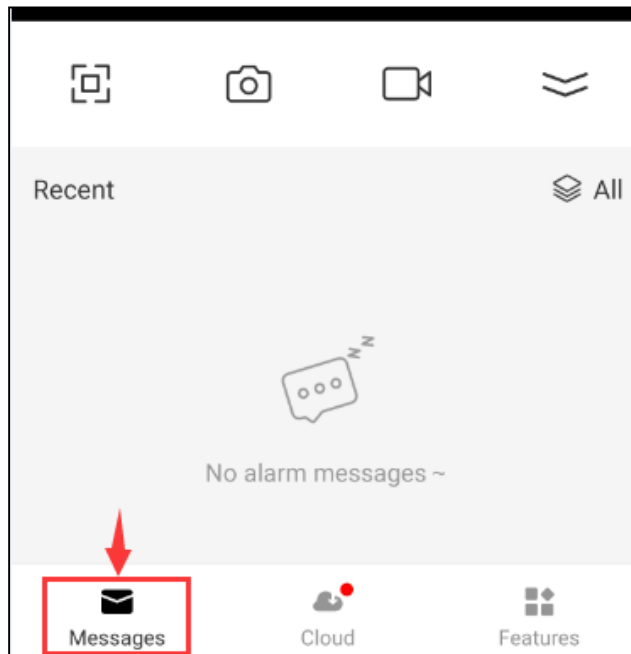


Click the "Motion Detection" button to turn on/off motion detection function.

After you turn it on, you can set alarm sensitivity level from "high" to "low" according to your needs as follow.

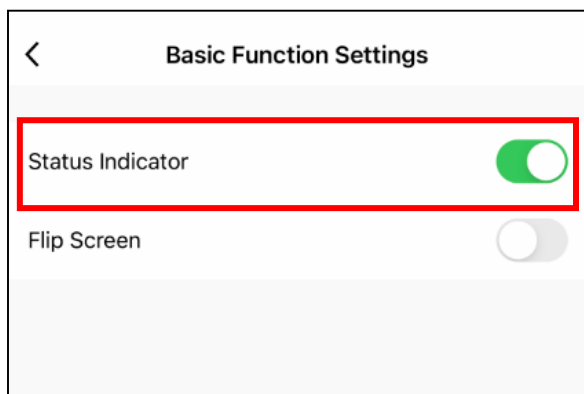
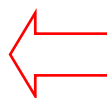
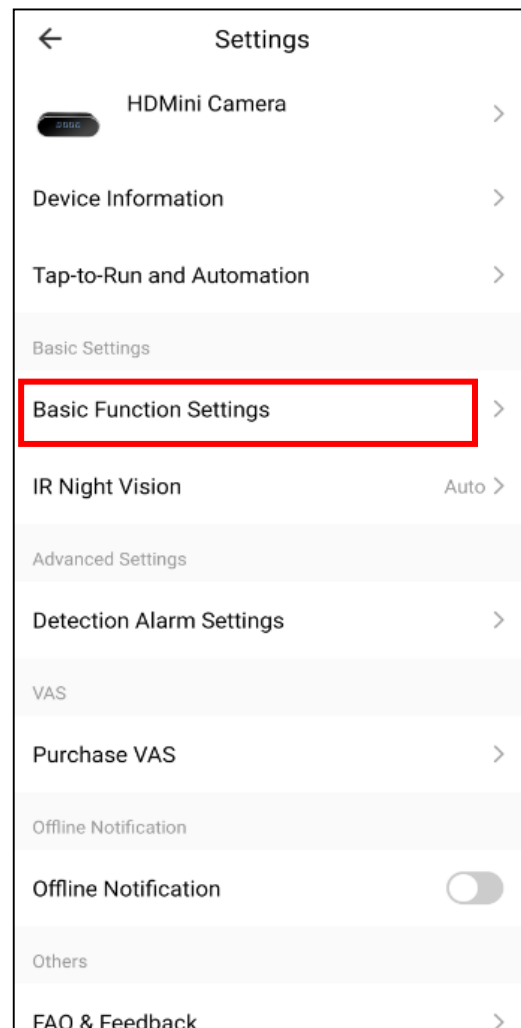
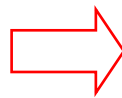
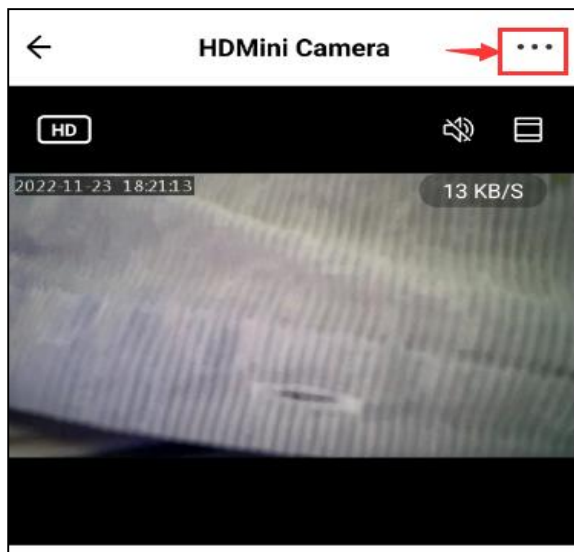


## How to check the motion detection alarms?



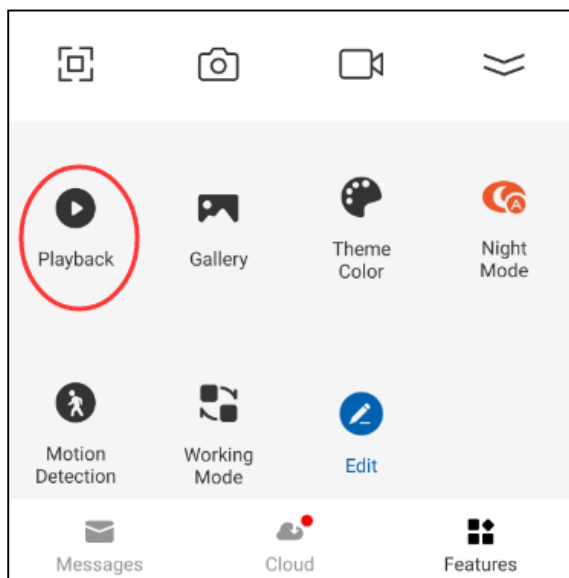
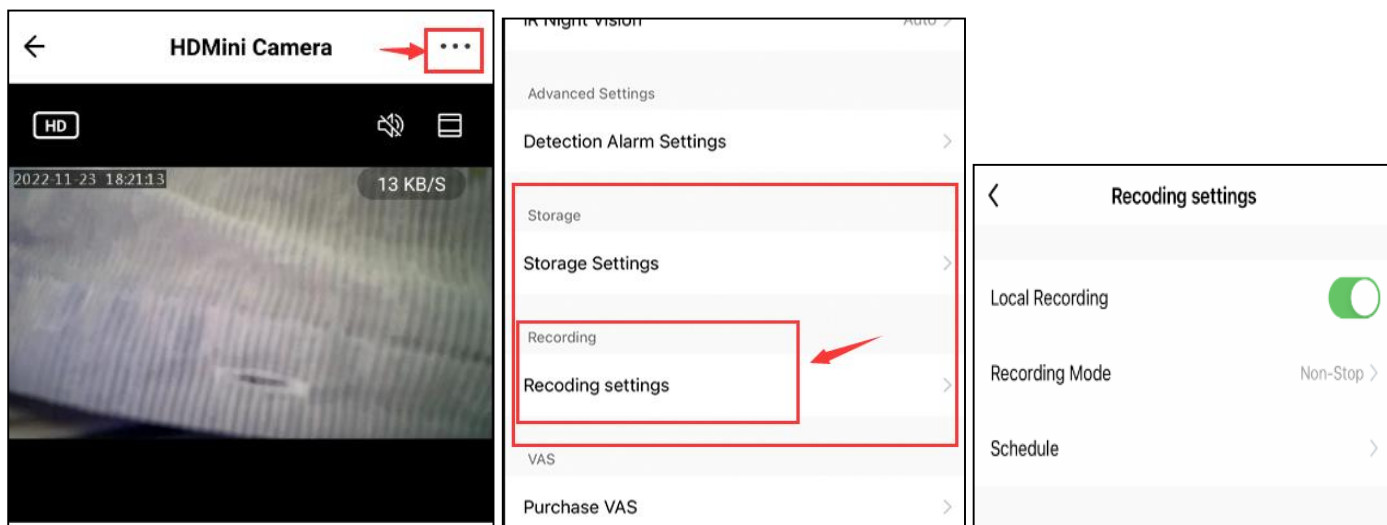
6) Turn off the blue indicator light.

The blue indicator light can be turned on/off with the app. Turn it off/on with the Basic Function Settings.



## 7) Micro SD card recording configuration.

With a Micro SD card installed recording can be stopped and started.



Playback can be viewed online and you can download files from the Micro SD card.

## 4. LIMITATIONS & PRECAUTIONS

This device is intended for use in accordance with all applicable local, state, and federal laws and regulations. Neither the manufacturer nor the distributor are liable for any illegal use. User accepts all responsibilities with the operation and use of this device.

## 5. WARNING

- 1) Please read this manual carefully before using the device and keep it for future use.
- 2) Don't use it in any illegal places or situations as per your local laws.
- 3) For extended battery life, charge once a month if it's not being used.
- 4) In order to maintain the performance of the device, do not place or use in hot, cold, dusty or humid environment.